

SEE 3-00-098-b

106

8872

APPROVED
LORAIN CO.
MAP DEPT.

DATE 6-30-75

PAGE 300-097A

BY L.W. Hall

VOID
AFTER

Charanflex Chartered
L.W. Hall
6-30-75

101

-027

DEC 31 1975

JUL 2 1975

30th ST

570 X 60

Vacated ORD NO 8438
2-25-63 60'
03-00-097-101-028

Vacated
ORD NO 6745
5-4-53

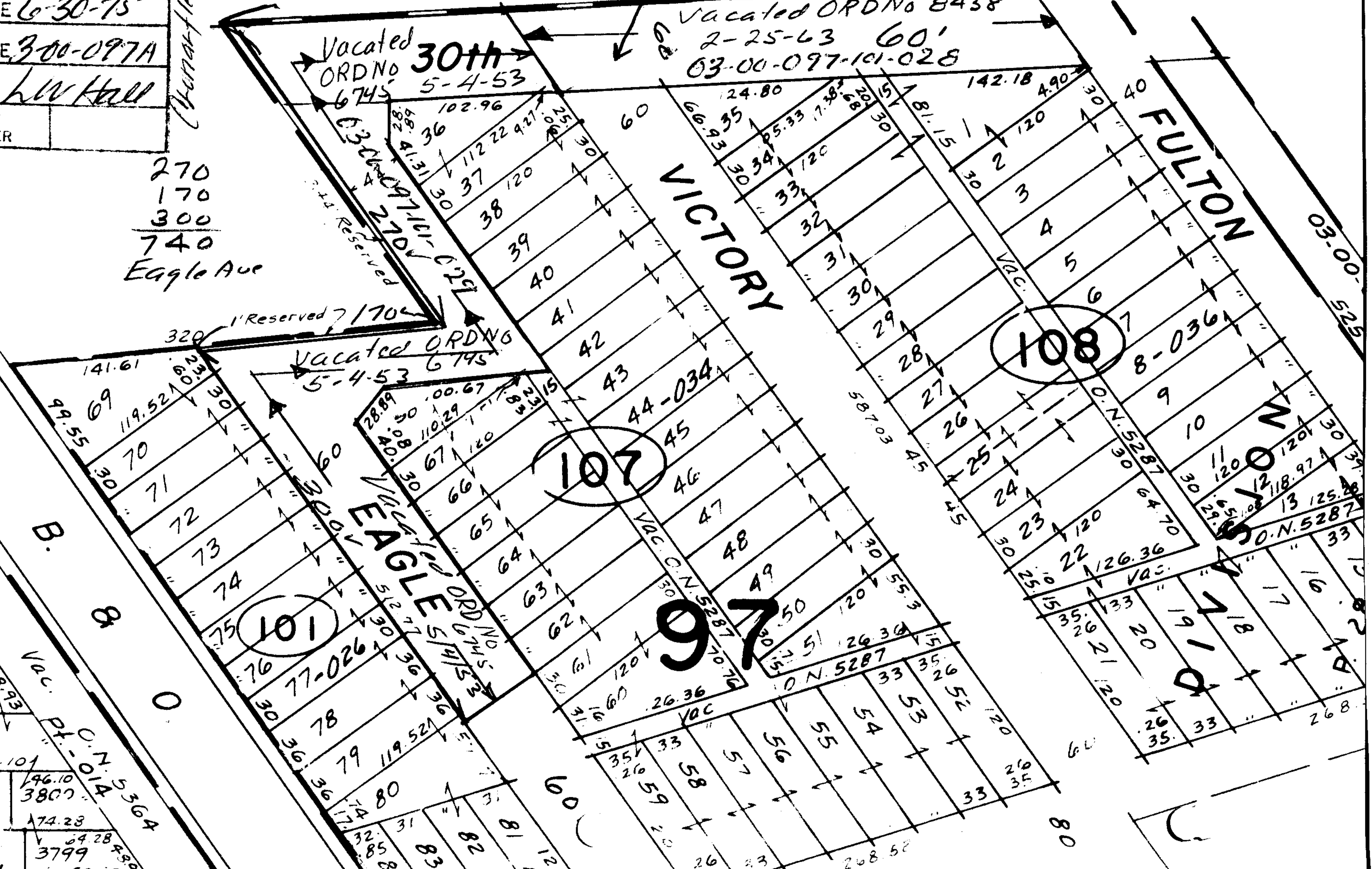
Vacated ORD NO
5-4-53 6745

270
170
300
740
Eagle Ave

PX. 03-00-098-121-035

Vac.
PX. 03-00-098-121-035
145364

40 91.70
3788
64.74
3789
92.92
3790
121.101
75
3791
146.10
3800
74.28
3799
32.85
31
83



40
VAC.
83.60
155.69
1862.00
12.58
1861-010
27
33

8-036
10
11
12
13
125.8
N. 5287
33

26
35
33
26.8