

30 P.A. 5-001

R. 759.43 Arc. distance 576.06

536.25 RD.

263.45
OAK 170.90
61.23 61.90

-019
.79 A.

-031 .68 Ac

POINT 100
100
98.05

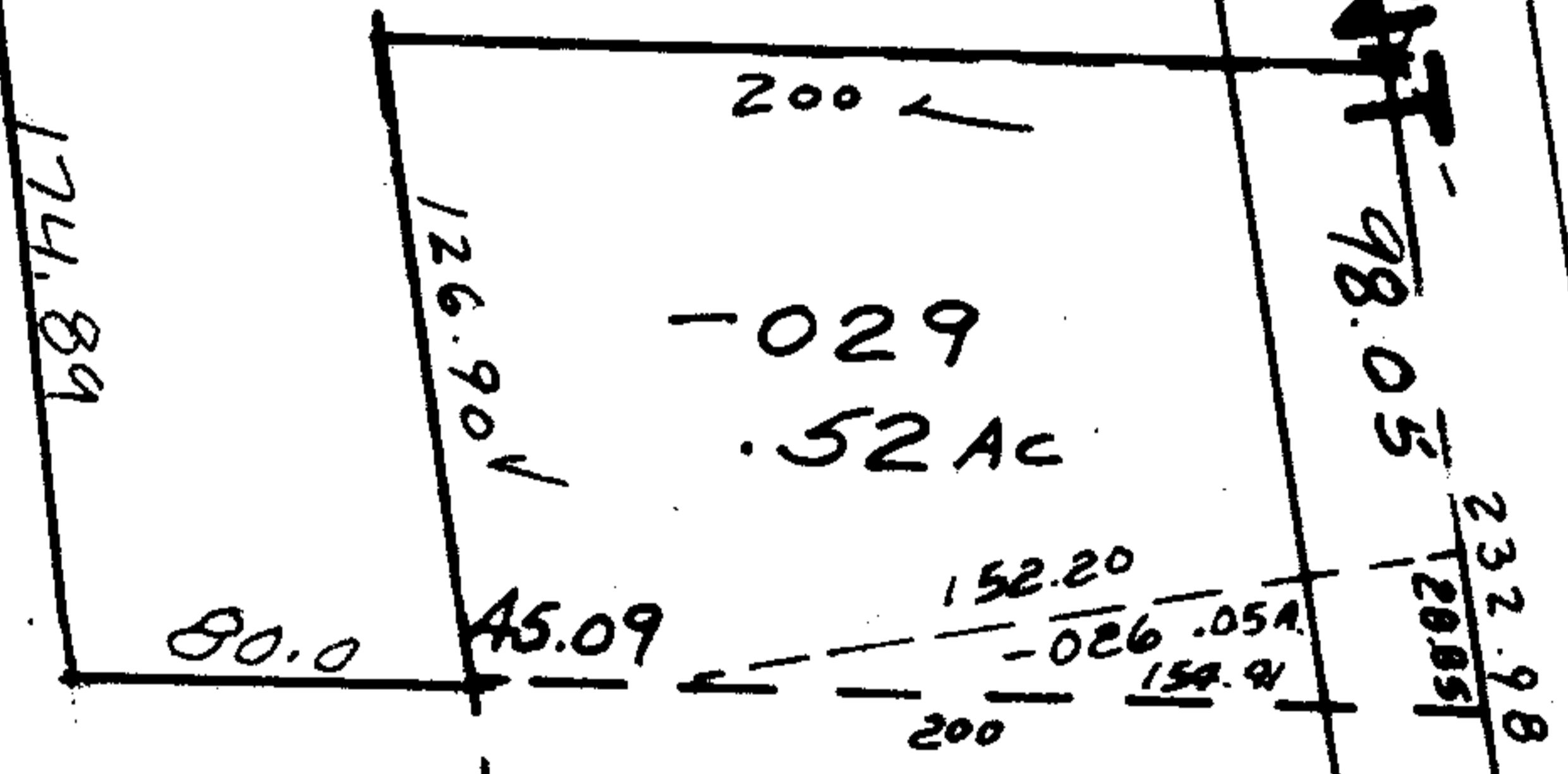
-029
.52 Ac

DEC 31 1975

032
~~030~~
11.24 A.
10.56 Ac

8867

APPROVED
LORAIN CO.
MAP DEPT.
DATE 6-25-75
PAGE 2-03-004A
BY L.W. Hall
VOID
AFTER



-018
.56 A.

885.68

8.9
P 7-59

83.60

-013
.61 A.

JUN 30 1975

8867

76.40