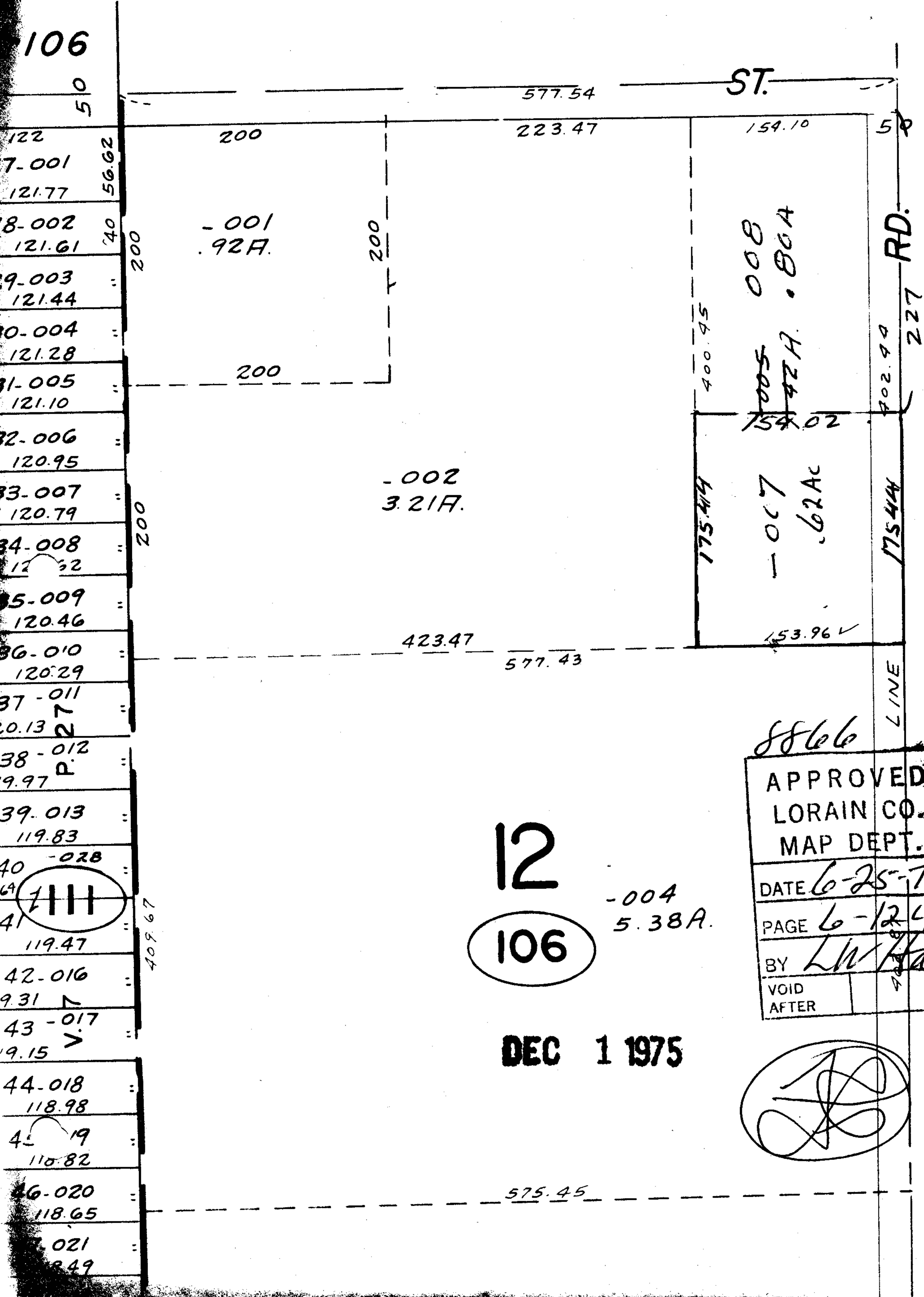


JUN 30 1975

106



- 122 7-001 121.77
- 121.77
- 121.61
- 121.44
- 121.28
- 121.10
- 120.95
- 120.79
- 120.52
- 120.46
- 120.29
- 120.13
- 119.97
- 119.83
- 119.47
- 119.31
- 119.15
- 118.98
- 118.82
- 118.65
- 118.49

8866

APPROVED
LORAIN CO.
MAP DEPT.
DATE 6-25-75
PAGE 6-124
BY L.W. Hall
VOID AFTER

12

106

DEC 1 1975