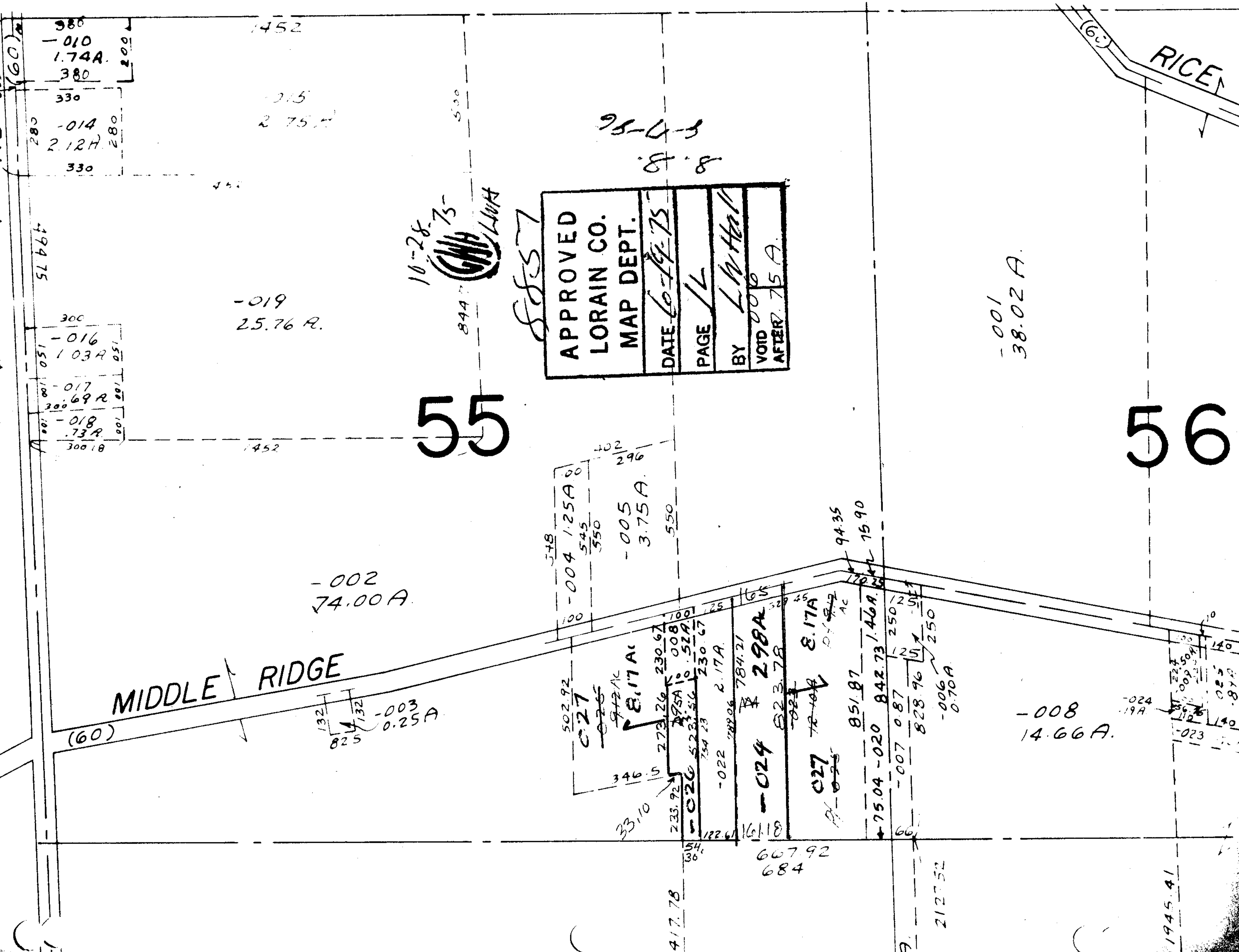


JUN 23 1975

S857

RD. 005



380
-010
1.74A
380
200

330
-015
2.75A

280
-014
2.12A
280
330

300
-016
1.03A
051

-017
300
69A

-018
300
73A
18

-019
25.76 A.

-002
74.00 A.

-003
0.25A

548
-004
1.25A
00
545
550

-005
3.75A
550

529.92
-027
8.17A
230.67

346.15
-026
8.17A
230.67

233.92
-020
8.17A
230.67

122.61
-022
8.17A
230.67

607.92
684

94.35
-024
1.46A
15.90

851.87
-020
1.46A
15.90

828.96
-007
0.87
250

-006
0.70A
250

-008
14.66 A.

-001
38.02 A.

10-28-75
S857

55

APPROVED
LORAIN CO.
MAP DEPT.
DATE 6-19-75
PAGE 1/1
BY L. W. Hall
VOID 000
AFTER 75 A.

95-4-3
8.8

56

1945.41