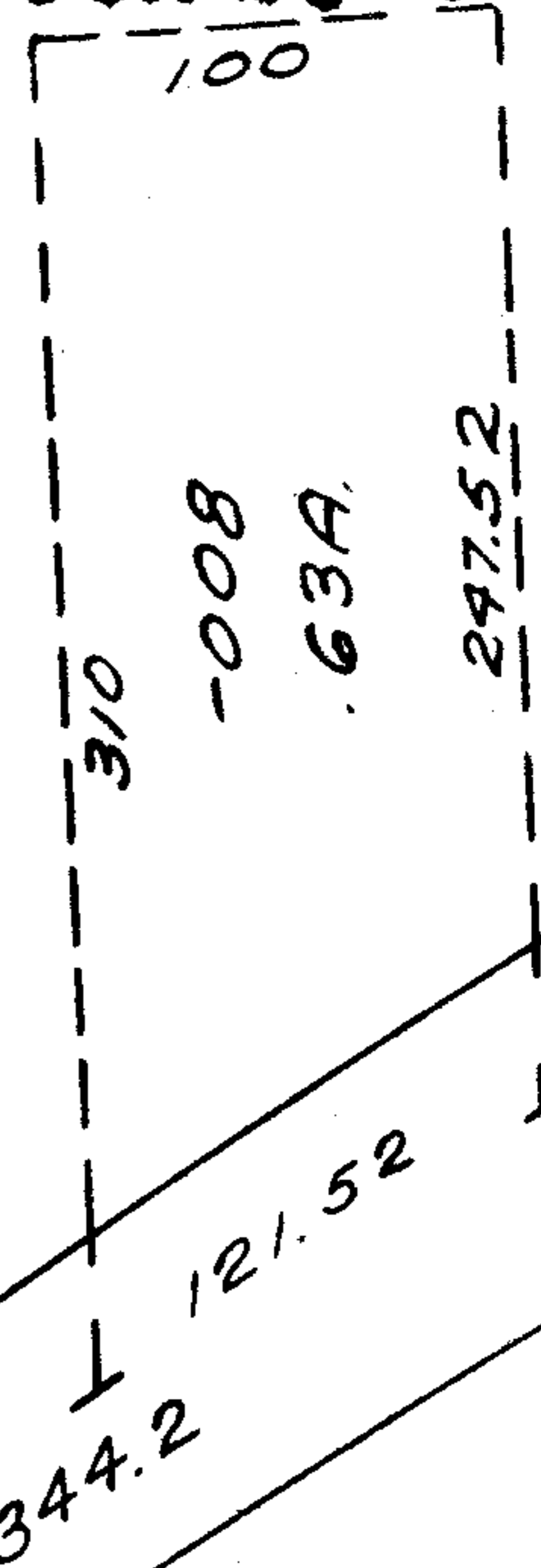


8849

JUN 25 1975.

~~030~~
~~35.66 AC~~
031
34.83 AC

DEC 31 1975



8849

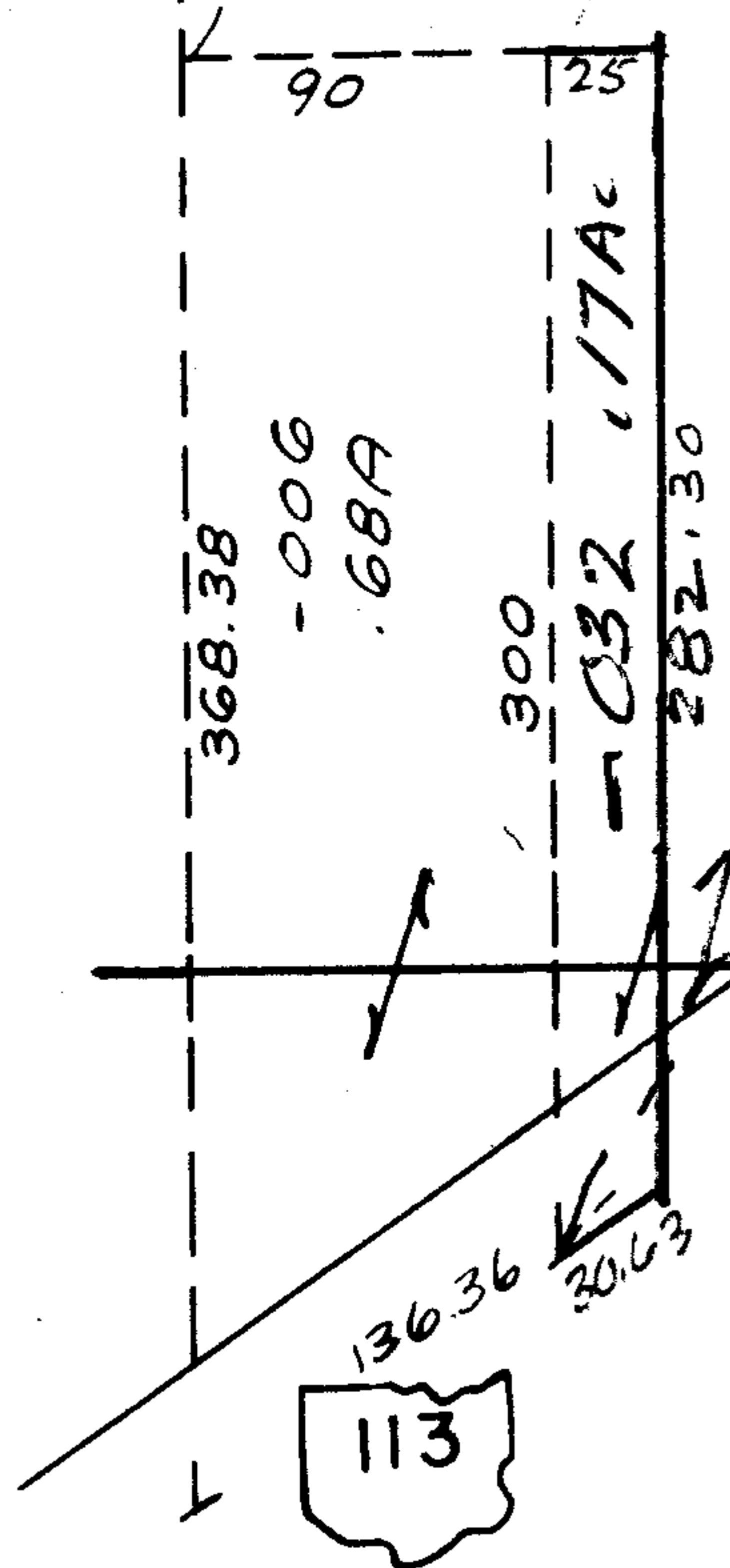
APPROVED
LORAIN CO.
MAP DEPT.

DATE 6-17-75

PAGE 500-03313

BY L.W. Hall 6/14

VOID AFTER



MILAN ELYRIA

Pt. 5-00-032-000-034
Pt. 17.89A.



AMHERST TWP.

SCALE: 1" = 100'