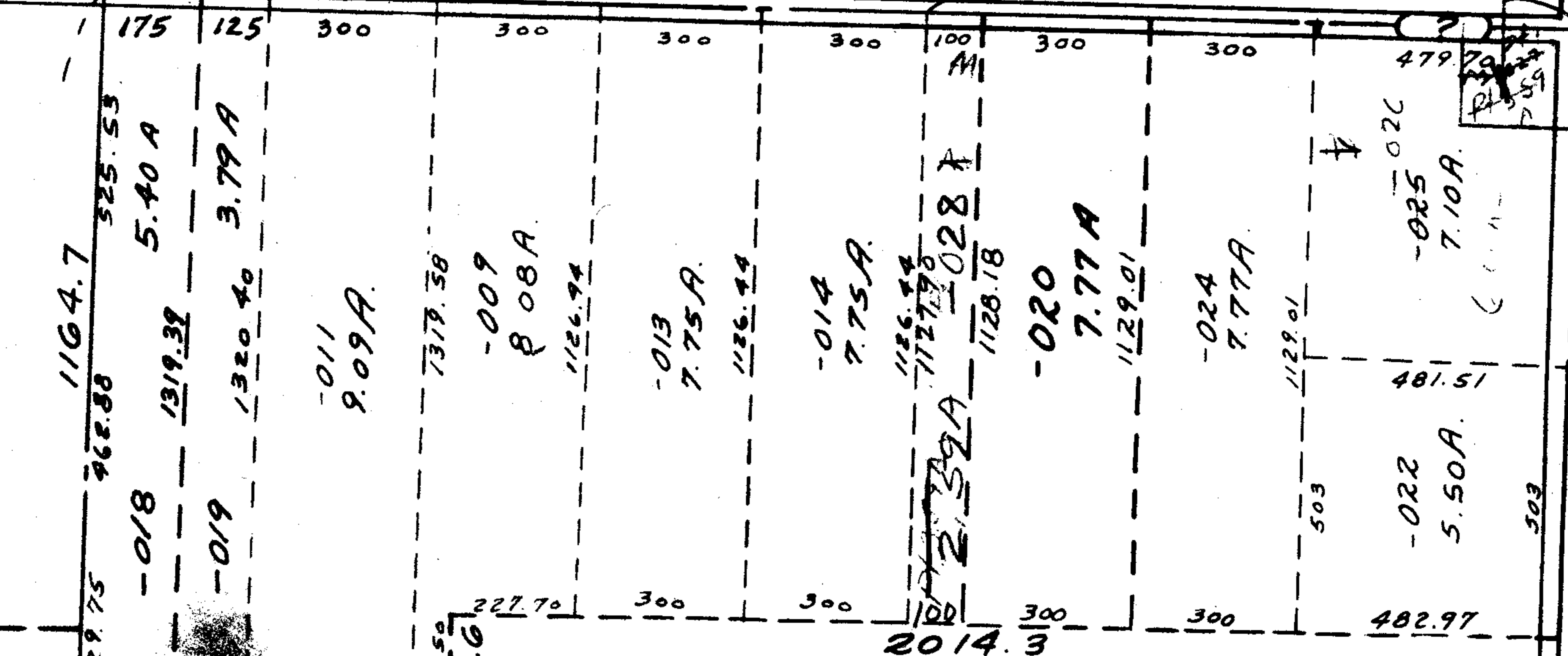


8833

1179.7 RD.

-029
1.00 AC



76

-002
35.00 A.

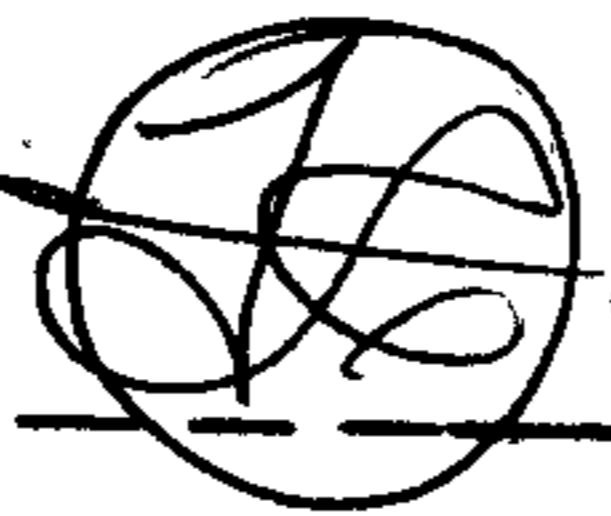
JUN 13 1975

1626.9

353.4

SEP 11 1975

-003
25.00 A.



-016
34.23 A.

APPROVED	
LORAIN CO. MAP DEPT.	
DATE	6-10-75
PAGE	16 F
BY	[Signature]
VOID AFTER	200

-007 9.56 A.

2167.93

-008
34.55 A.

2696.25

566.32

-017
.04 A.

712.60

380.82

160

649

386

8833

2791.8

660

329.75

-018

1319.39

-019

1320.40

-011

9.09 A.

192.6

373.50

173.50

227.70

300

300

100

2014.3

300

300

482.97

503

-022

5.50 A.

481.51

-025

7.10 A.

1129.01

-024

7.77 A.

-020

7.77 A.

1129.01

1128.18

-014

7.75 A.

1126.94

-013

7.75 A.

1126.94

-009

8.08 A.

7379.58

300

300

300

300

100

300

300

479.70

175

125

525.53

5.40 A.

1164.7

968.88

660

89°13'