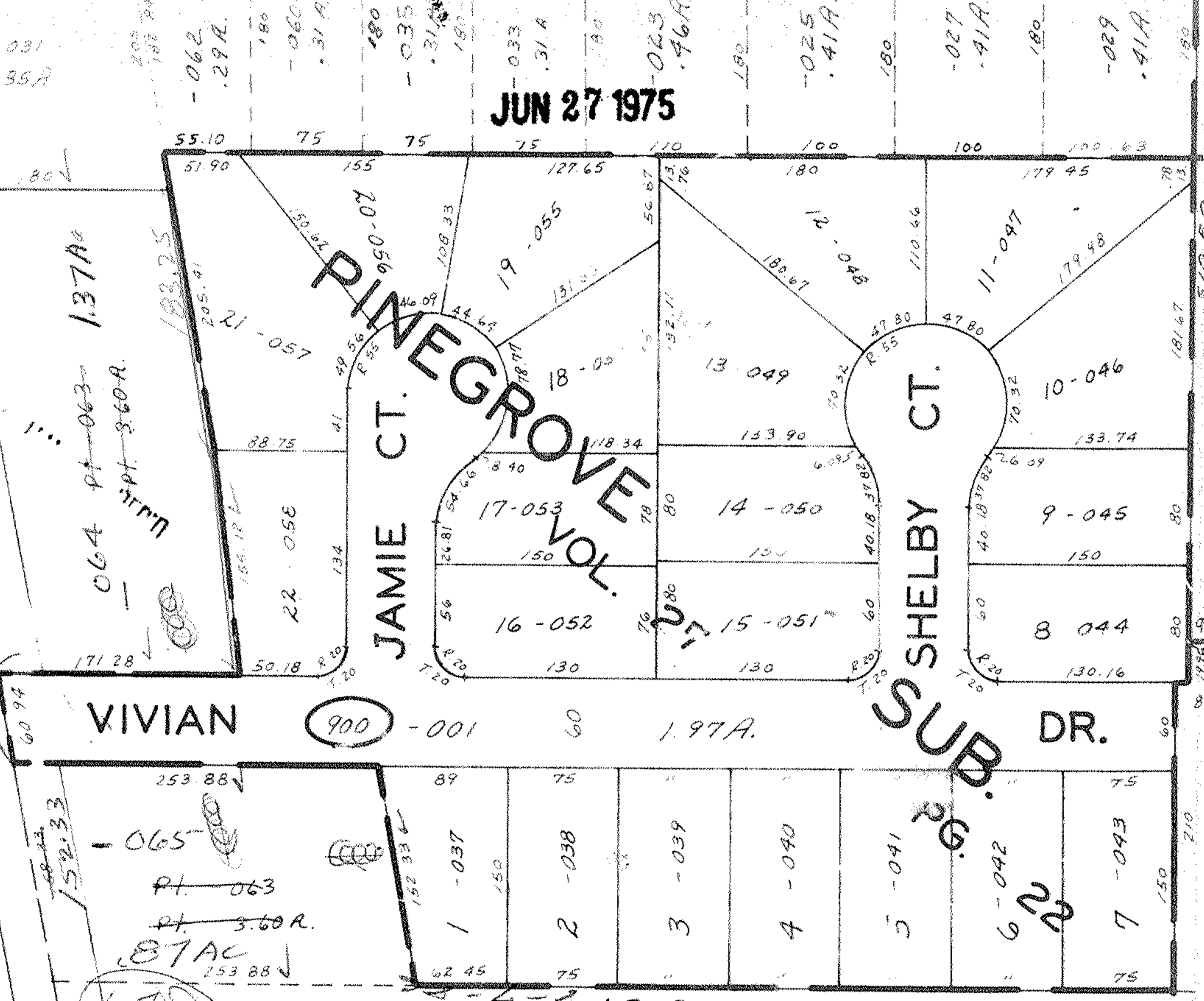


8831
8832

ELYRIA 544.05 529.59
MEDINA 615.07 337.85



JUN 27 1975

SEP 25 1975



APPROVED
LORAIN CO.
MAP DEPT.
DI 6-10-75
PAGE 11-00-100B
BY: L.H. HARRIS
VOID
AFTER

102

1 - 002
2 - 003
3 - 004
4 18-005 ALLT.
5 - 006
510.50

- 066
- Pt. 065
- Pt. 3.60 A.
1.36 Ac

2559.84
3375.26

3334.30
1792.78