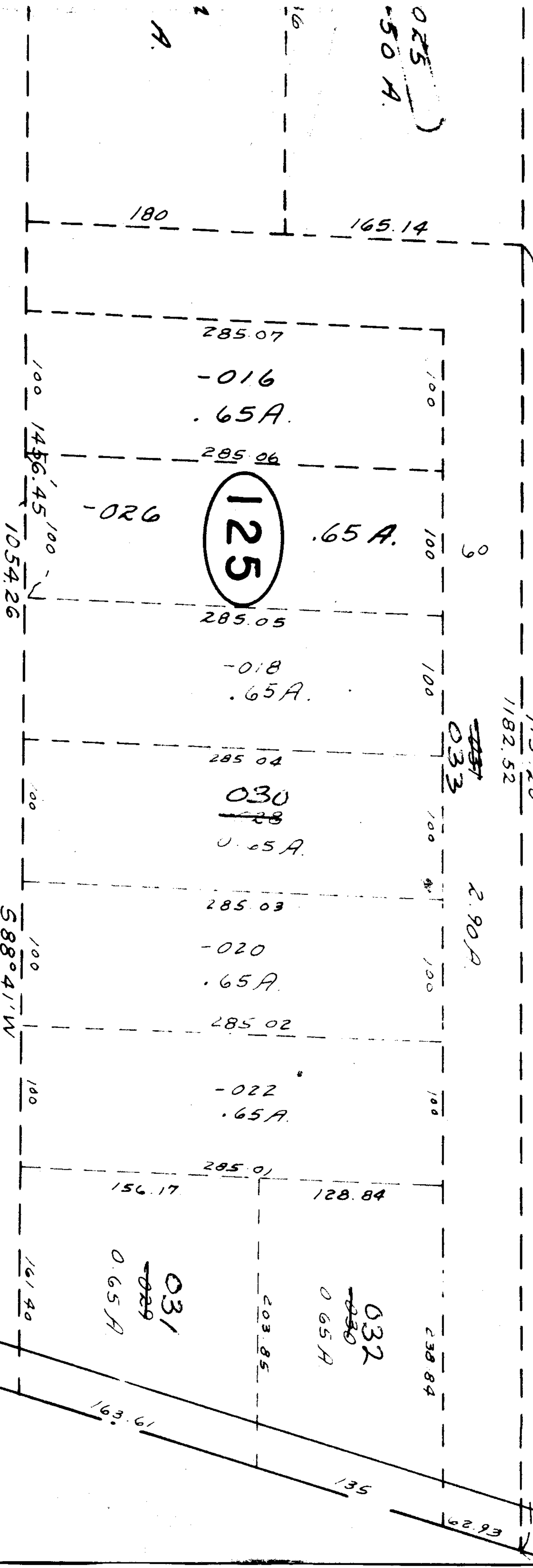


#8827

See #
8713

JUN 20 1975



PT -029
FT 20.60 A.

6-9-75

LWH



8827

APPROVED	
LORAIN CO.	
MAP DEPT.	
DATE	6-9-75
PAGE	10-00-006 F
BY	LWH
VOID AFTER	

292.53 N 58° 57' E

379.5
378 E N 82° 35 W

N 7° 25' E

-015
1.54 A

241.10

62.93

62.93