

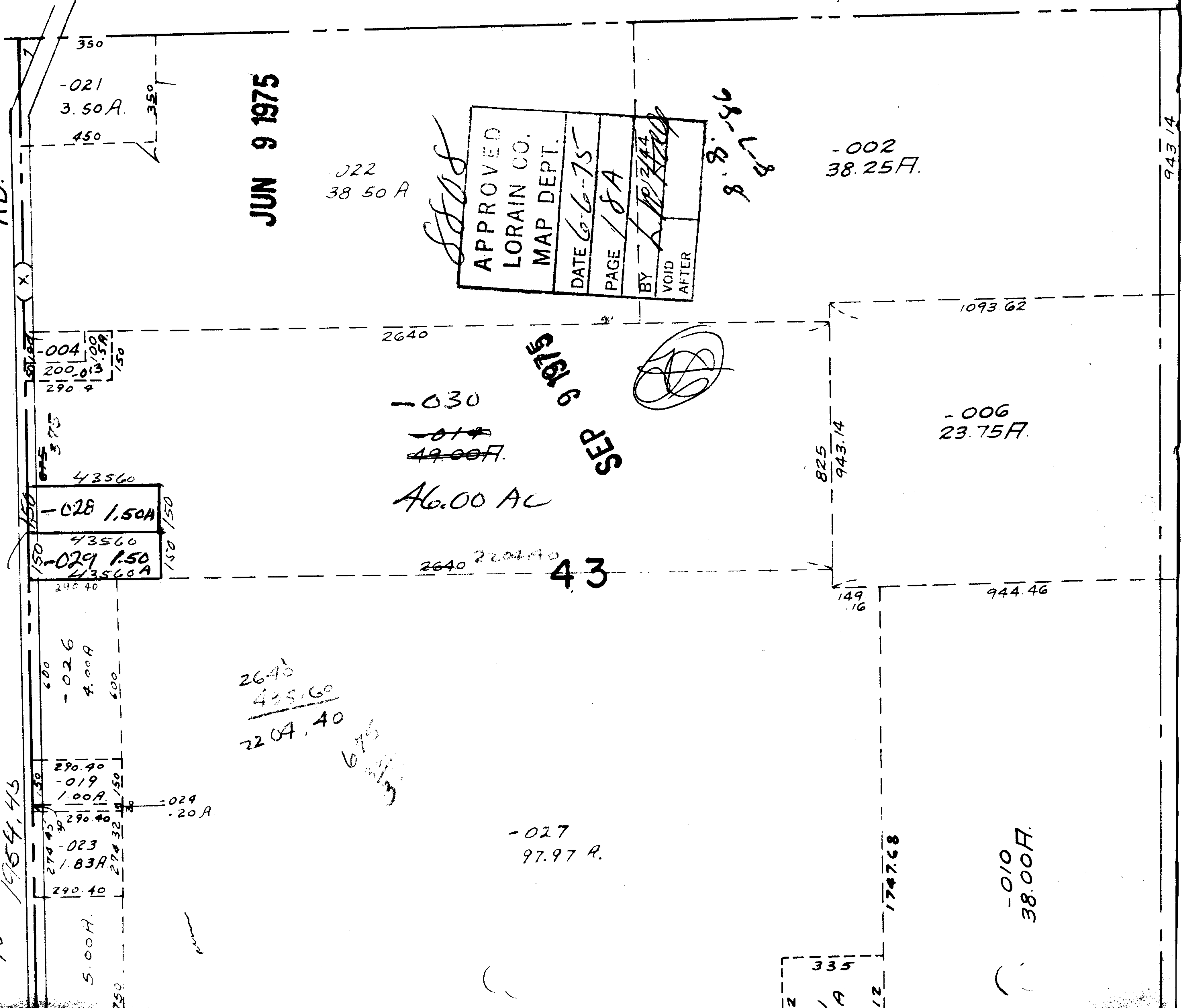
8808

1954.45
150
1804.45

To 2 Pro (two) 1/2 mi. Rd.

RD.

1954.45



350
-021
3.50 A.
450

JUN 9 1975

-022
38.50 A

S.S.S.

APPROVED
LORAIN CO.
MAP DEPT.
DATE 6-6-75
PAGE 18A
BY <i>[Signature]</i>
VOID AFTER

8' 8" 8' 8"

-002
38.25 F.

-004
200.03
290.4

2640

-030
~~49.00 F.~~

JUN 9 1975
SES

46.00 AC

-028 1.50A
43560

-029 1.50
43560A

2640 2204.40

43

600
-026
4.00A
600

2640
485.60
2204.40

290.40
-019
1.00A
290.40

-024
.20A

274.45
-023
1.83A
290.40

5.00A

-027
97.97 A.

825
943.14

-006
23.75 F.

149
.16

944.46

1747.68

-010
38.00 F.

1/2
A
1/2

943.14