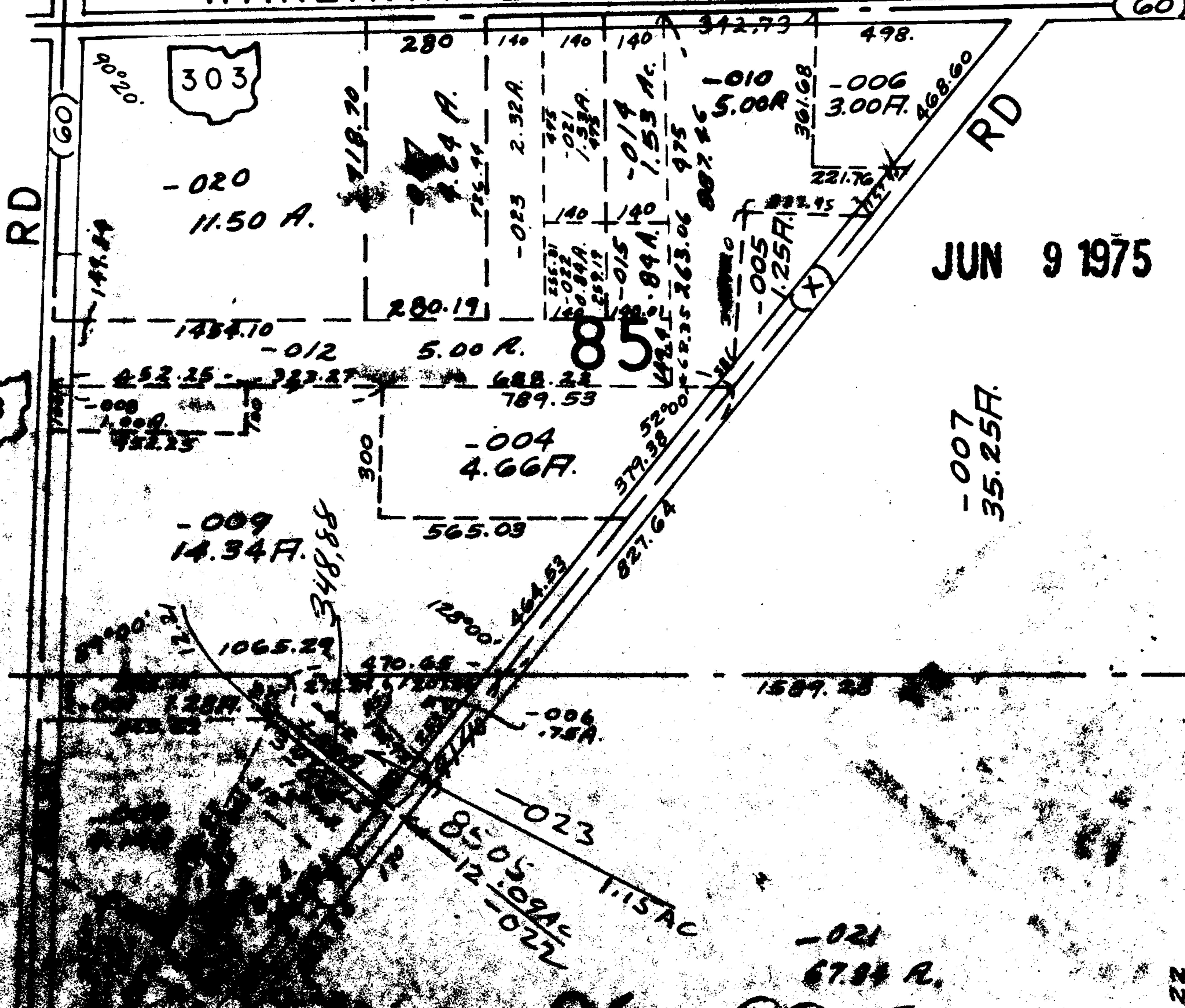


8805

WAKEMAN-LAGRANGE-RICHFIELD

(60)



JUN 9 1975

-007
35.25F.

8805

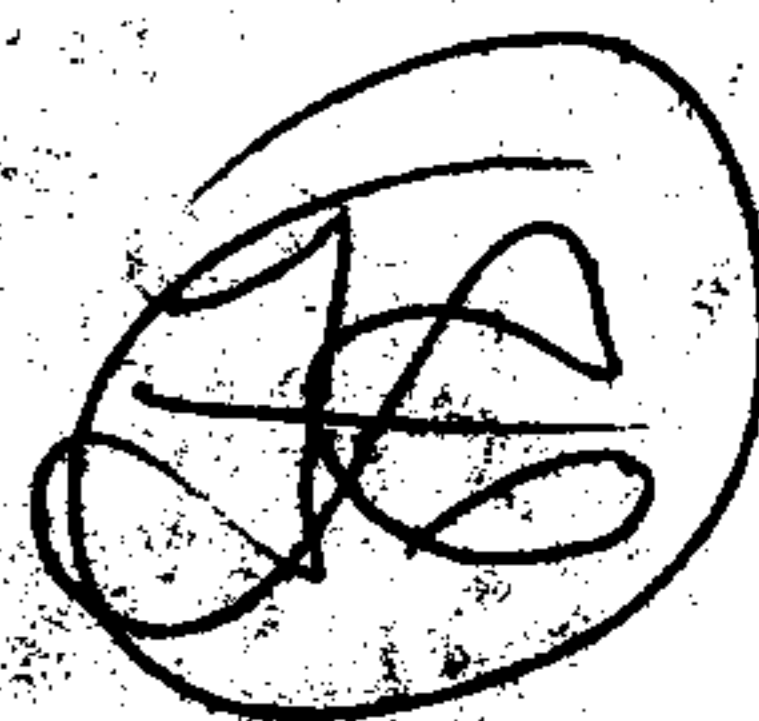
APPROVED
LORAIN CO.
MAP DEPT.

DATE 6-5-75

PAGE 146

BY *LW Hall*

VOID
AFTER



SEP 11 1975

96

1628.22

846.80

270.24