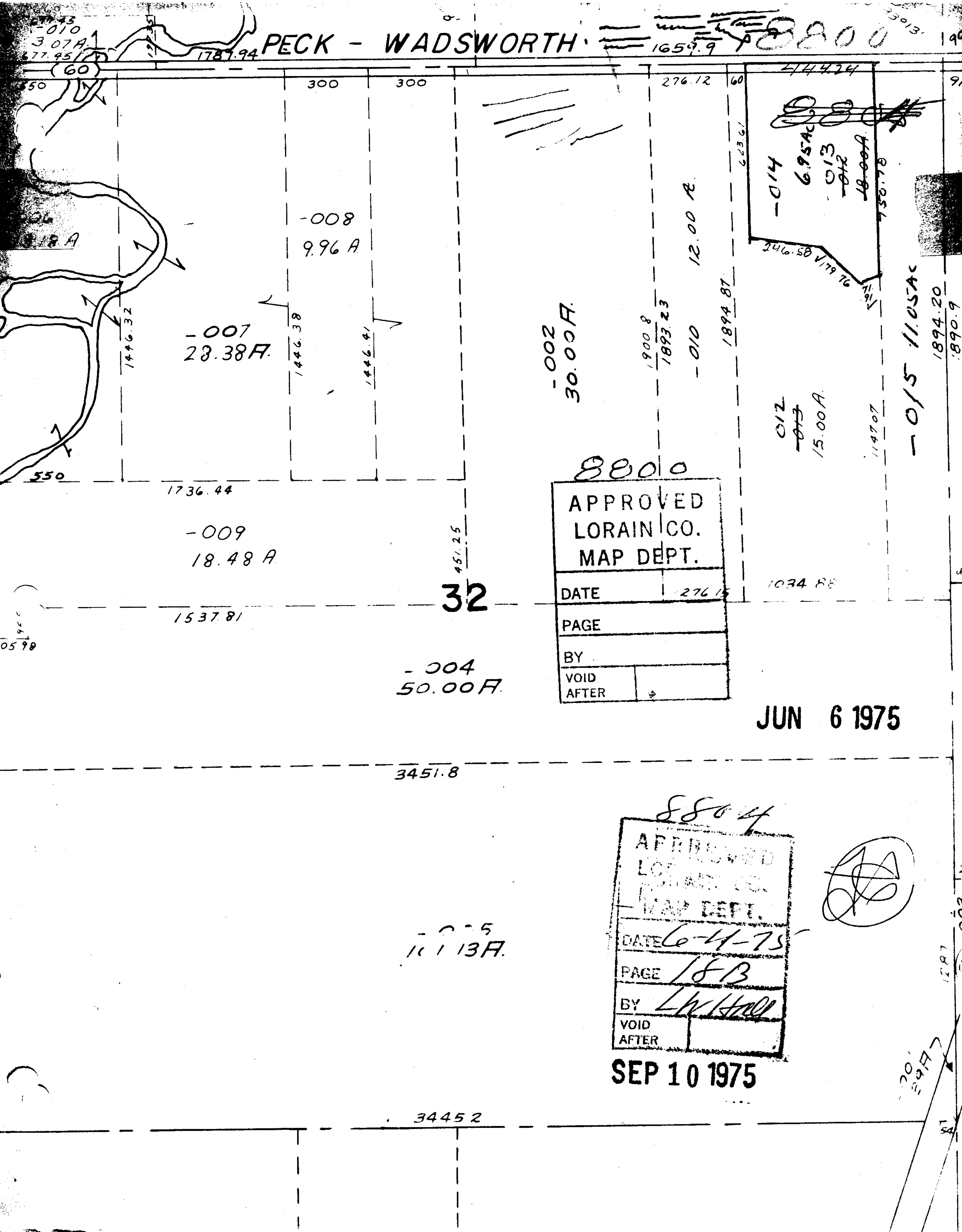


PECK - WADSWORTH

1659.9

8800



-002
30.00 A.

-007
28.38 A.

-008
9.96 A

-009
18.48 A

-004
50.00 A.

32

8800

APPROVED LORAIN CO. MAP DEPT.	
DATE	276 15
PAGE	
BY	
VOID AFTER	

JUN 6 1975

8804

APPROVED LORAIN CO. MAP DEPT.	
DATE	6-4-75
PAGE	18 B
BY	L.H. Hall
VOID AFTER	

SEP 10 1975

