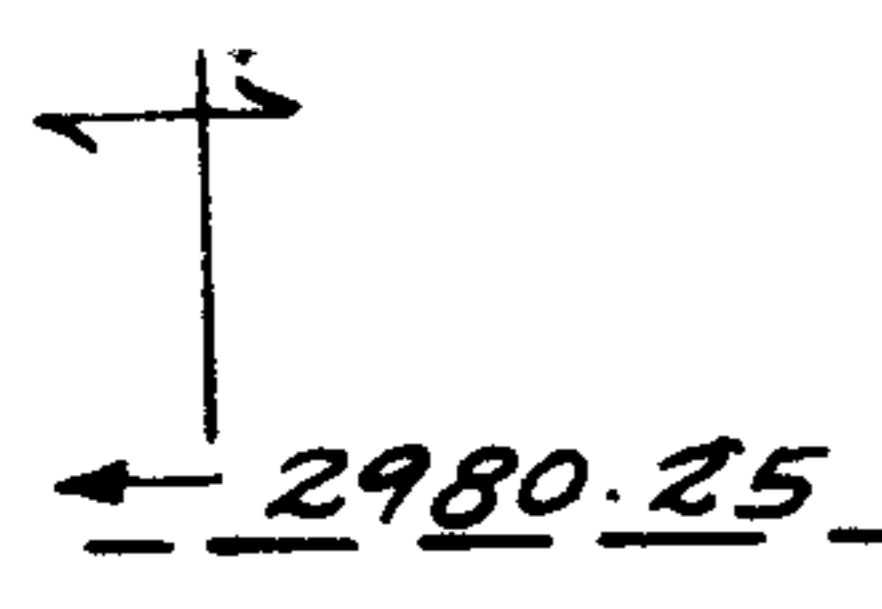


PT. - 022
PT. 2900 F.



8769

MAY 29 1975

PT. - 023
PT. 56.14 F.

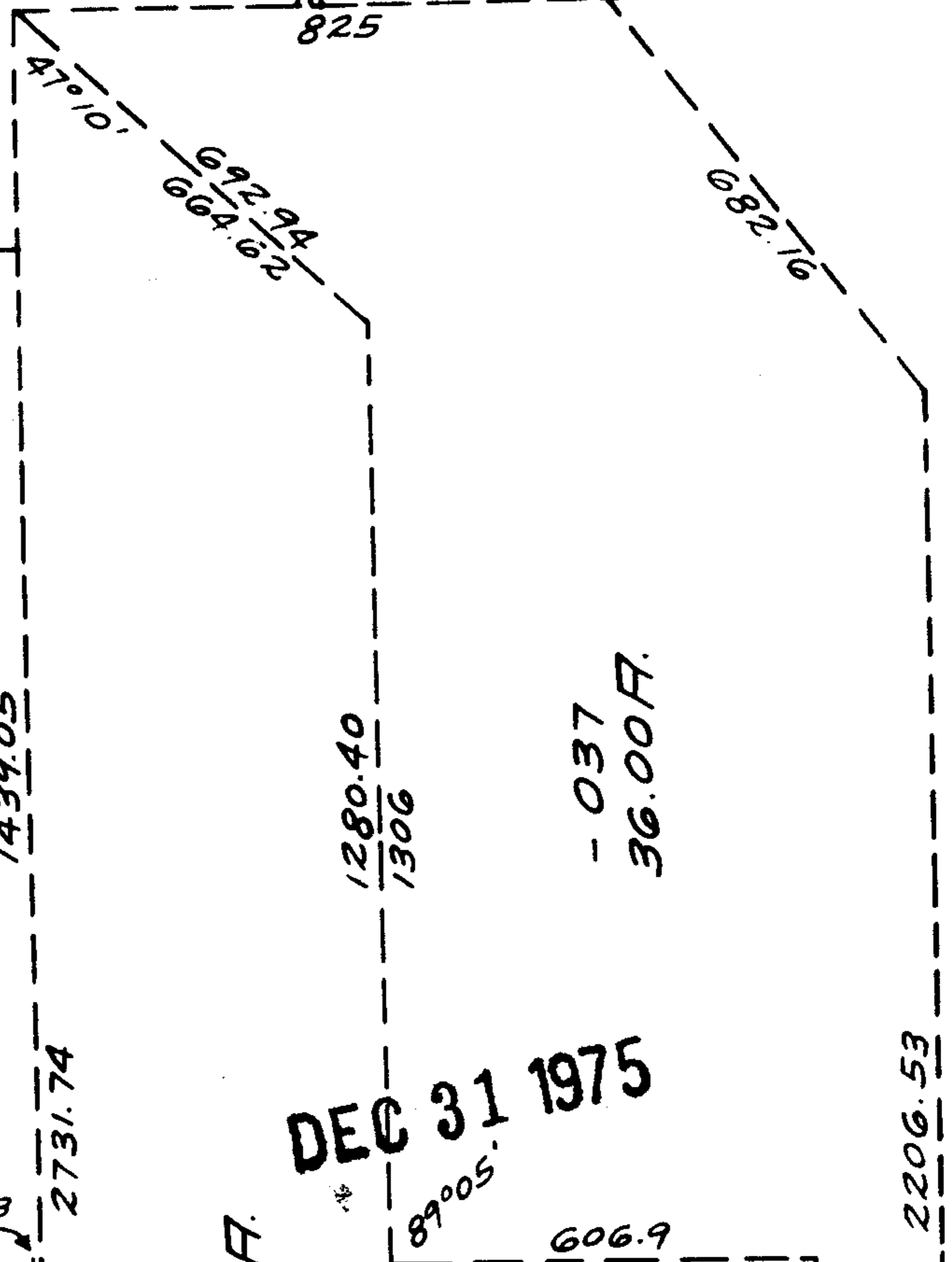
25

WILLIAMS
4.2
C30

2595.84

- 024

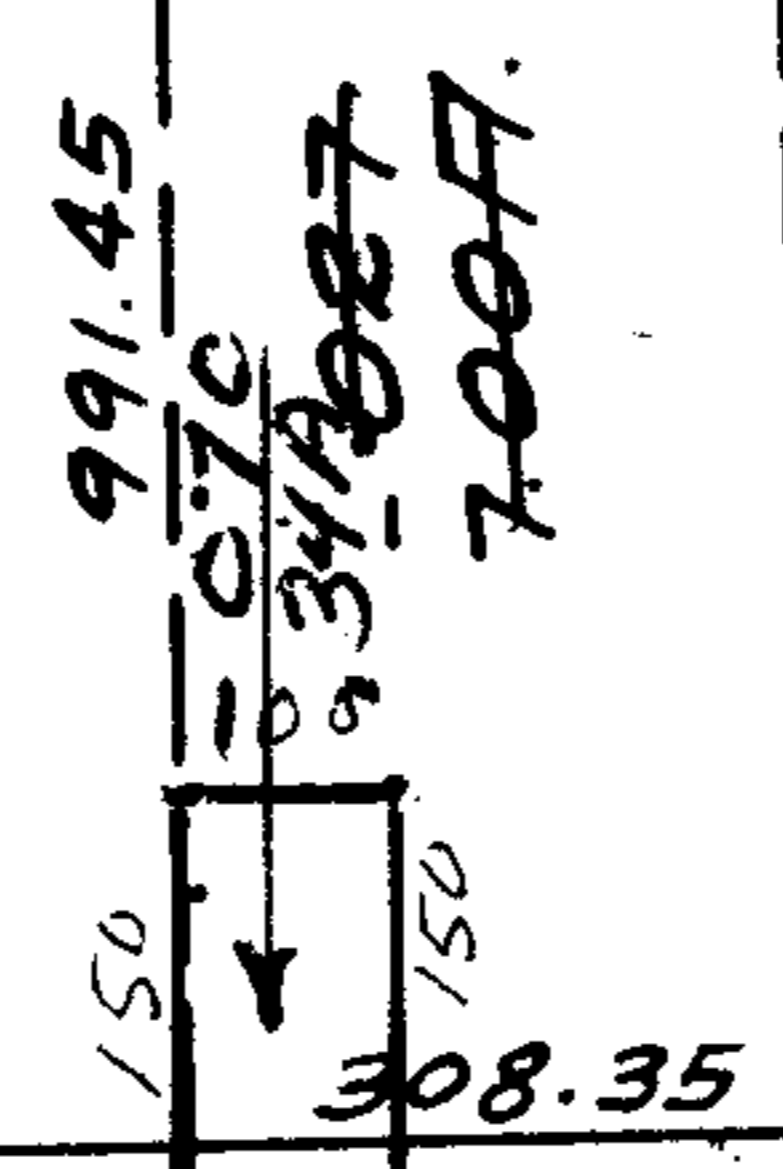
85.16 F.



DEC 31 1975

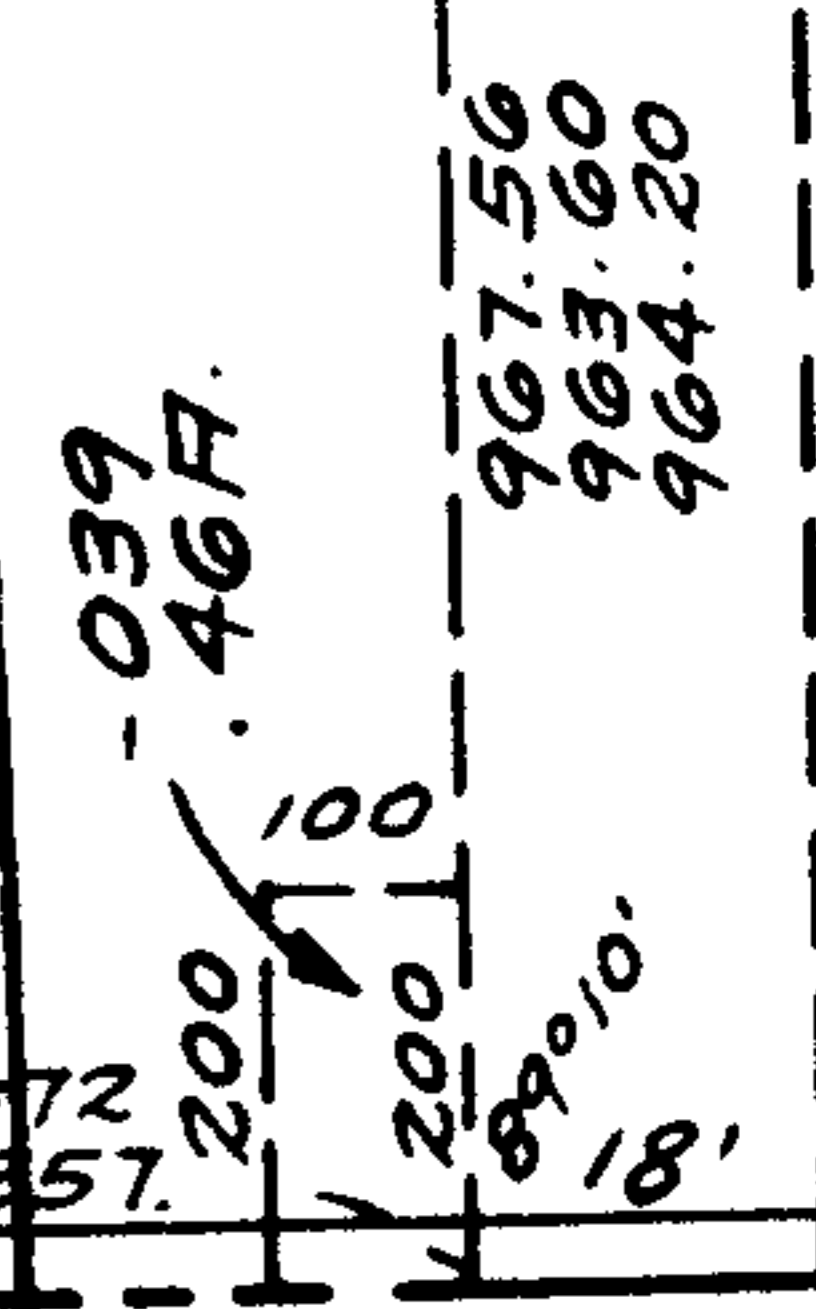
2587.25

- 026
14.38 F.



8769
APPROVED
LORAIN CO.
MAP DEPT.
DATE 5-21-75
PAGE 46
BY L. W. Hall
VOL 16.20
AETER

8769
APPROVED
LORAIN CO.
MAP DEPT.
DATE 5-21-75
PAGE 46
BY L. W. Hall
VOL 16.20
AETER



2582.58

SEE 7-D

VILLAGE

SECTIONS

400'