

ASHLAND

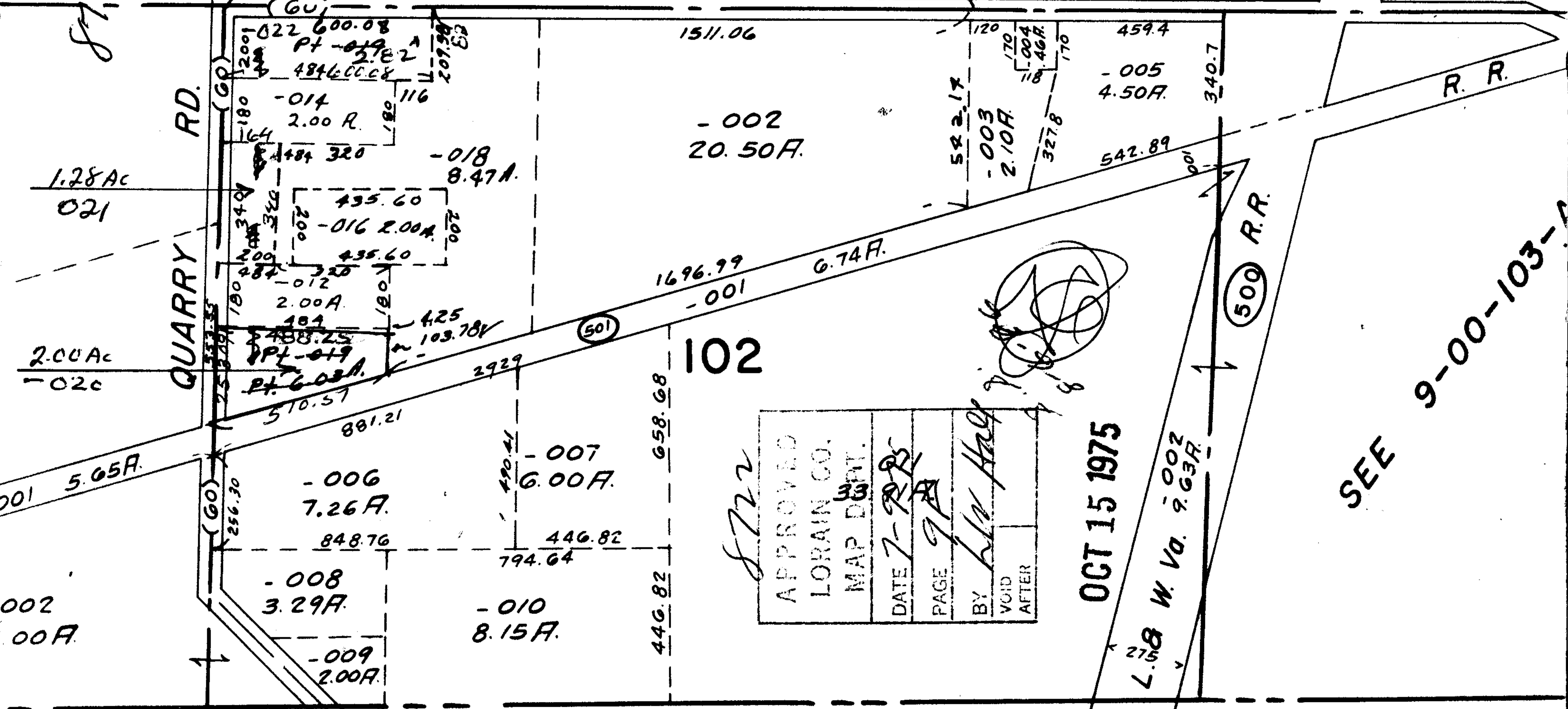
JUL 10 1975

HAMILTON

SEE MAP 9-E AT BOTTOM

8722

QUARRY RD.



102

APPROVED
LORAIN CO.
MAP DPT.
DATE 7-9-75
PAGE 9A
BY L.W. Hays
VOID
AFTER

OCT 15 1975

L. & W. Va. 9.00Z
275 9.63R

SEE 9-00-103-

R.R.

500 R.R.

00

01

1.28 Ac
021

2.00 Ac
02c

001 5.65A.

002
00A.

022 600.08
Pt -019
484600.08

-014
2.00 R.

435.60
-016 2.00A.

435.60
-012
2.00A.
425
Pt -019
103.78V
Pt. 6.00A.

-006
7.26A.

-008
3.29A.

-009
2.00A.

-007
6.00A.

-010
8.15A.

1511.06

1696.99

658.68

446.82

-001

-002
20.50A.

522.17
-003
2.10A.

459.4
-005
4.50A.

542.89

340.7

