

CUMMINGS

8705

MILLER

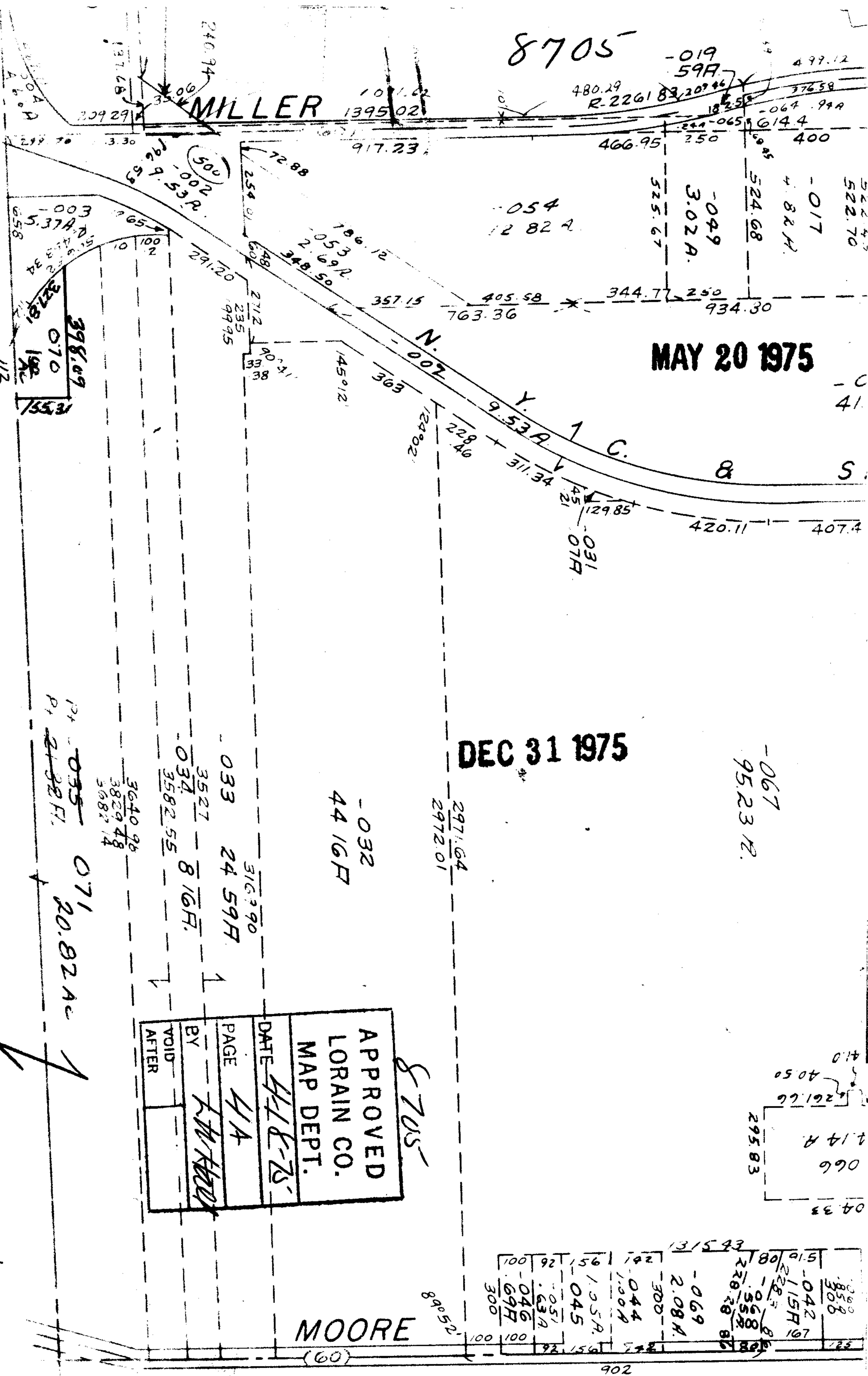
MAY 20 1975

DEC 31 1975

SEE 4-E

APPROVED
LORAIN CO.
MAP DEPT.
DATE 4-18-75
PAGE 4A
BY [Signature]
VOID AFTER

MOORE



300	1.05 R.	1.00 R.	1.00 R.	1.00 R.	1.00 R.	1.00 R.	1.00 R.	1.00 R.	1.00 R.
300	0.45	0.44	0.44	0.44	0.44	0.44	0.44	0.44	0.44
300	0.46	0.46	0.46	0.46	0.46	0.46	0.46	0.46	0.46
300	0.46	0.46	0.46	0.46	0.46	0.46	0.46	0.46	0.46

112

P1 035 071 20.82 A

033 24 59 A
3527 8 16 F.
3582 55

032 44 16 F

2971.64
2972.01

067 95.23 R.

04 33
066
1.14 R
2.261.66
40.50
410

522.70
-017
4.82 H.

524.68
-049
3.02 A.

525.67

466.95

480.29
R. 2261.83

1011.42
1395.02

917.23

72.88

240.74
137.68
209.29
196.53
500
200
196.53 R.

5.37 A
558
327.81
198
112

398.09
070
155.31

112

112

112

112

112

112

112

112

112

112

112

112

112

112

112

112

112

112

112

112

112

112

112

112

112

112

112

112

112

112

112

112