

56.13 A.

8697

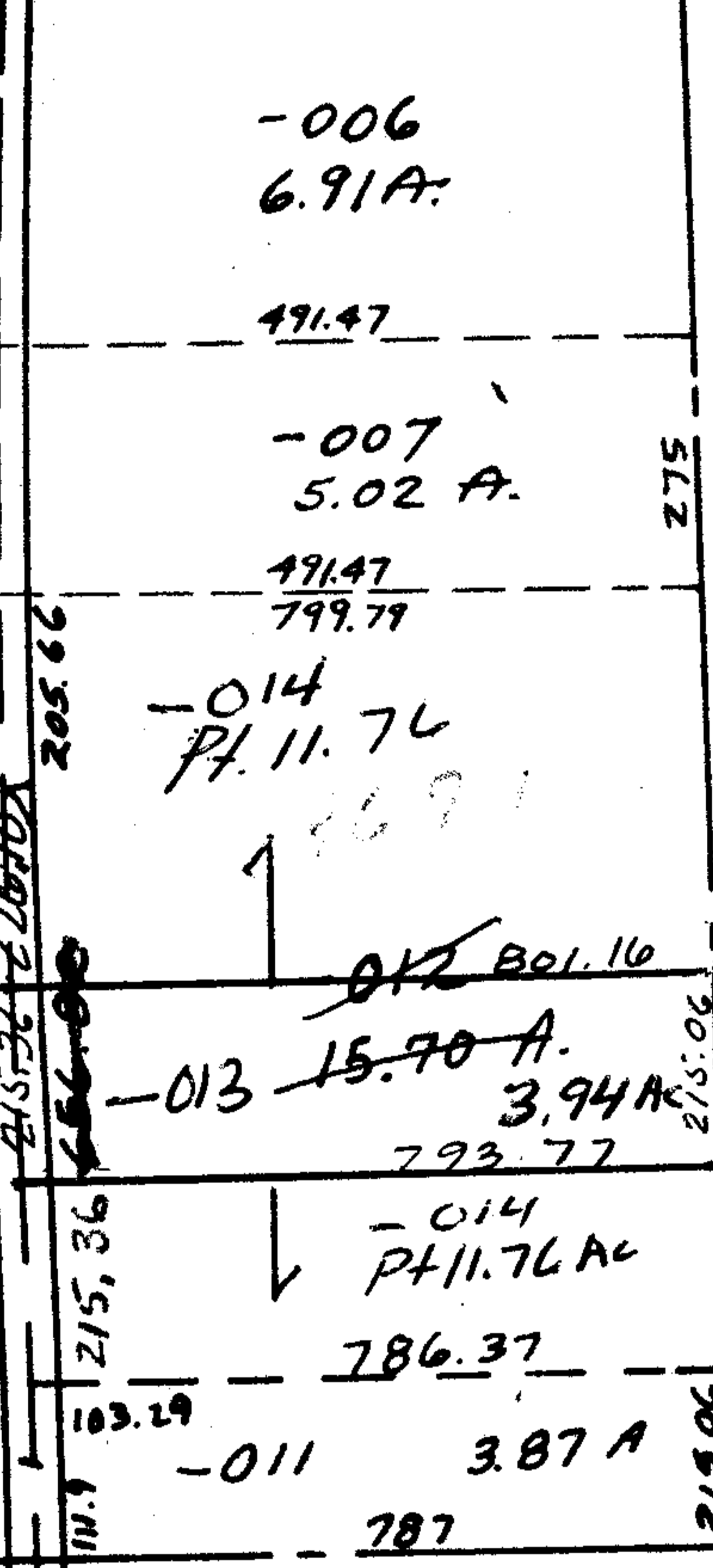
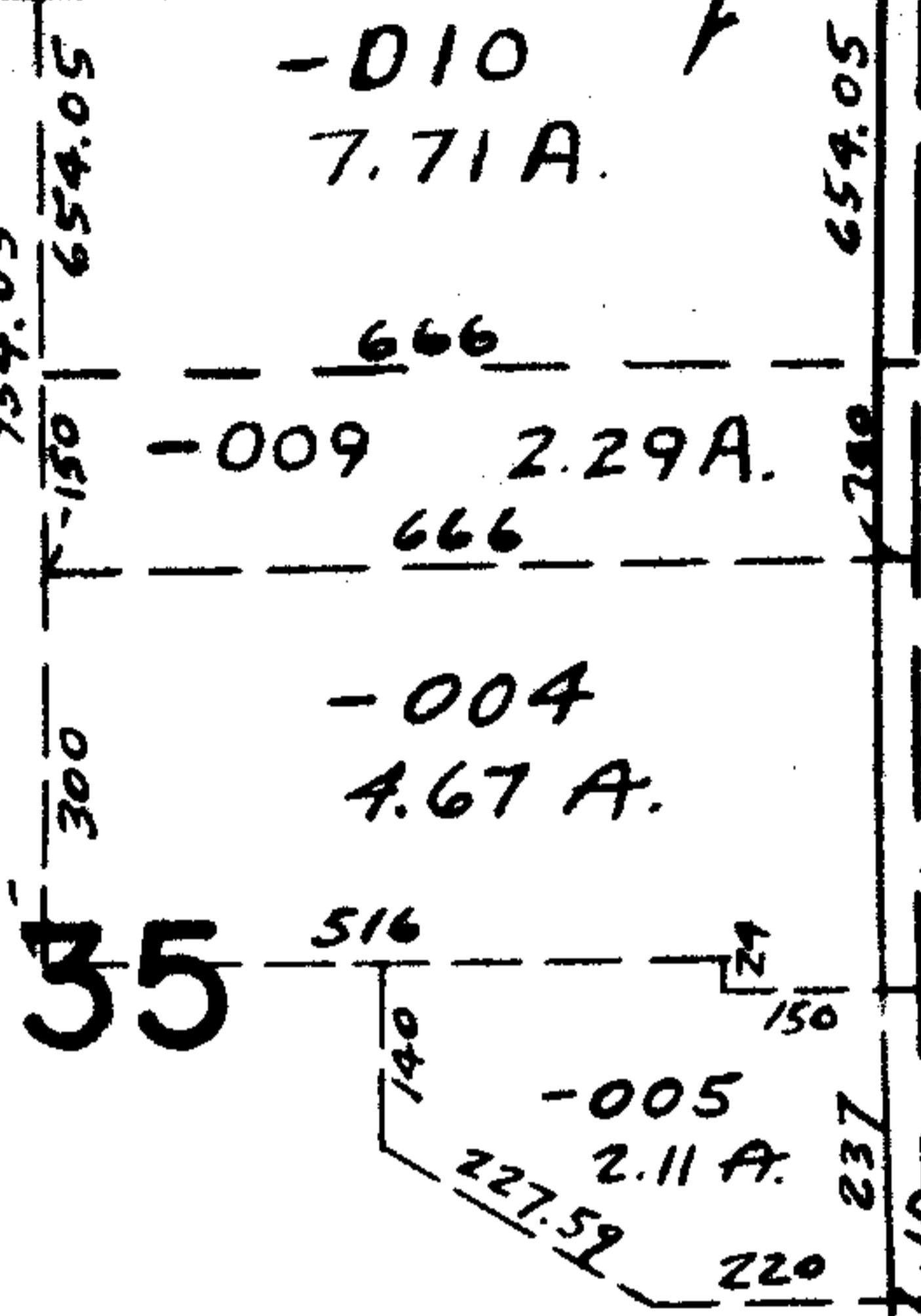
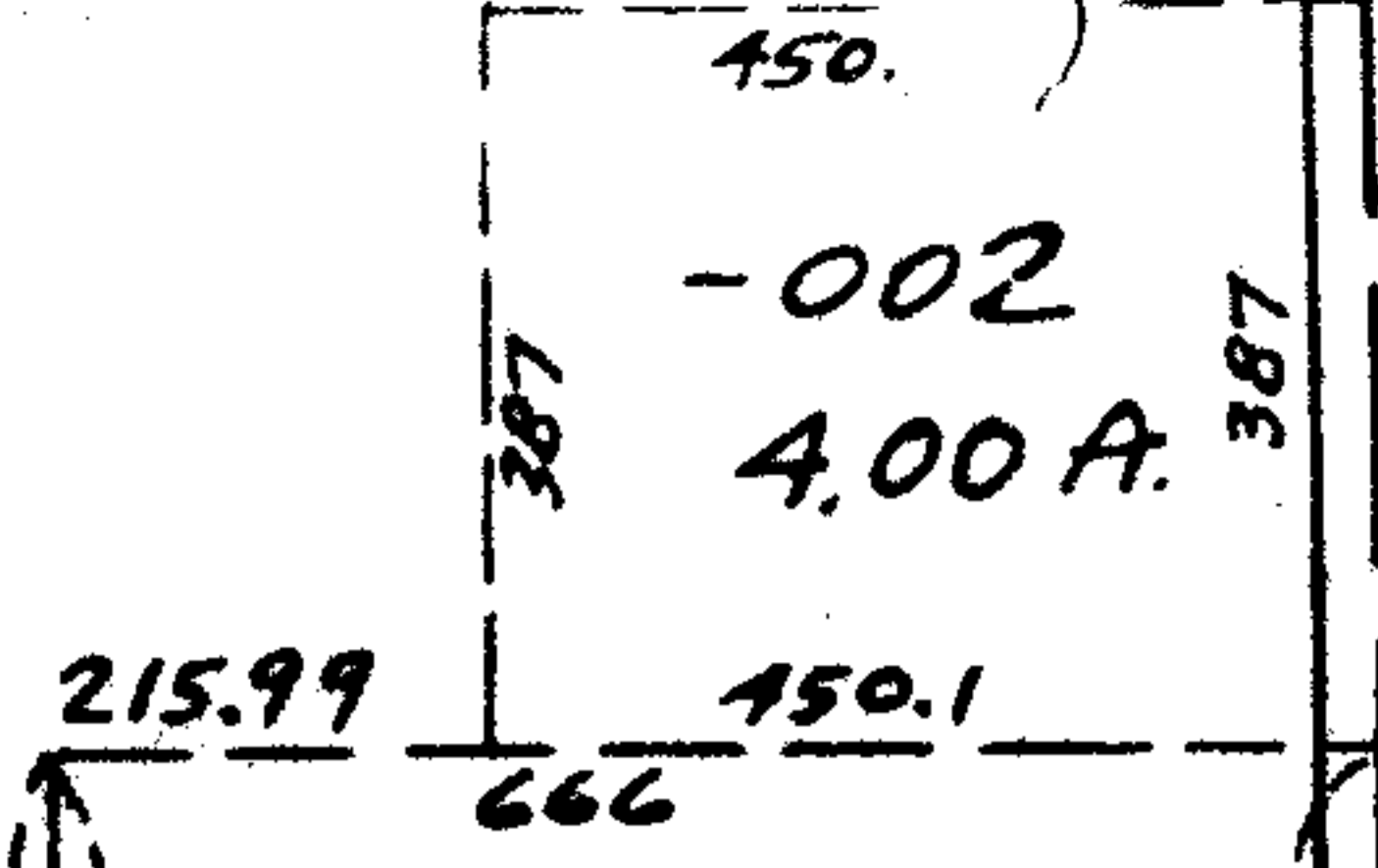
7 A.
6 A.
A.
1
V

APR 18 1975

A

-001
47.22 A.

35



656.82
-215.36
-226.10
215.36

8697

APPROVED
LORAIN CO.
MAP DEPT.
DATE 4-16-75
PAGE 19C
BY LW Hall
VOID AFTER

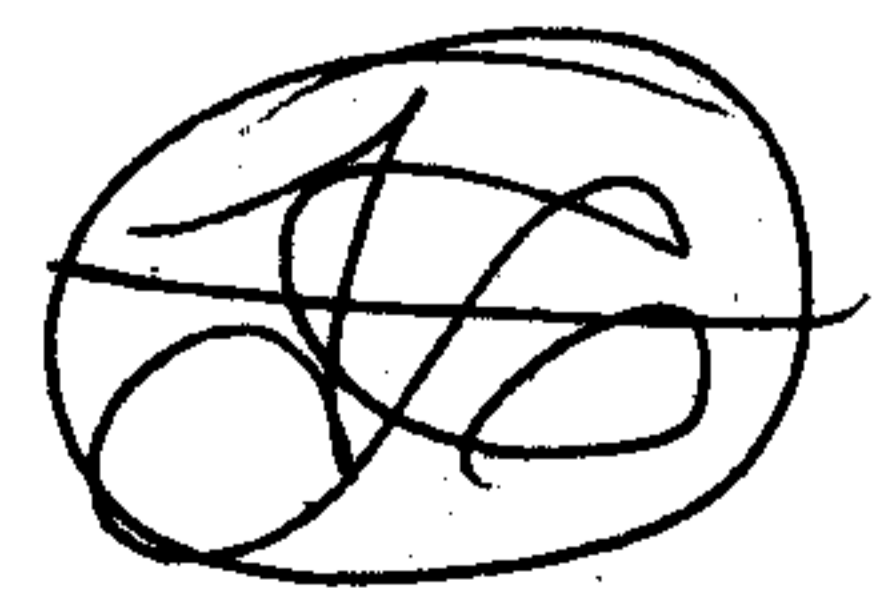
7.58 A

-002
7.00 A.

-001
38.95 A.

FOSTER

APR 30 1975



8697
D
W
H
H