

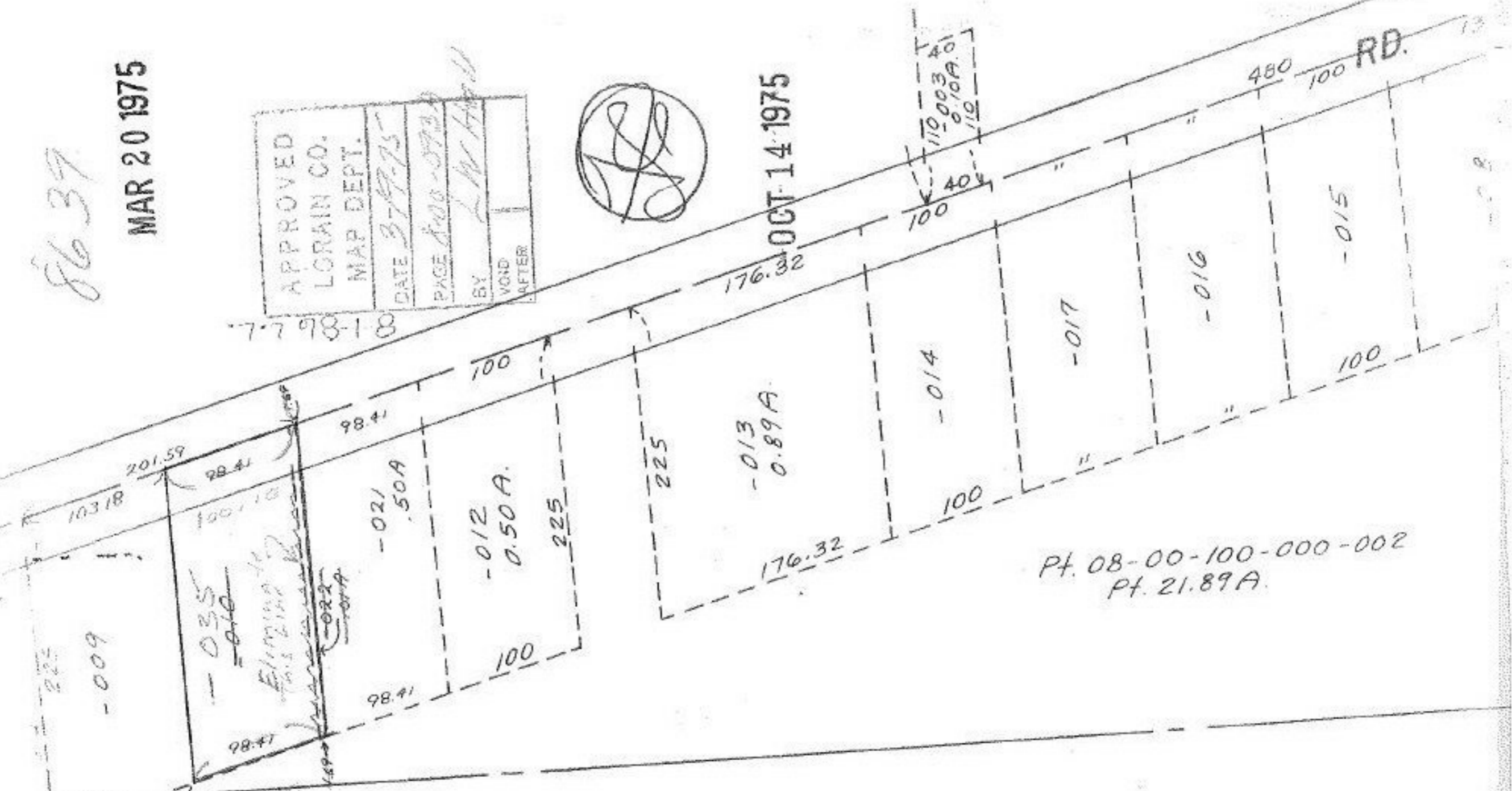
8639

MAR 20 1975

APPROVED
LORAIN CO.
MAP DEPT.
DATE 3-19-75
PAGE 800-093
BY L.W. Hall
VOID AFTER



OCT 14 1975



Pt. 08-00-100-000-002  
Pt. 21.89A.

SEE 8-B

Tax Map Correction  
 Comb + Elimination  
 of P.P. No 08-00-093-000-022  
 DV 960 Pg 188  
 L.W. Hall

ETTA TWP.

W 1/2 LOT 93