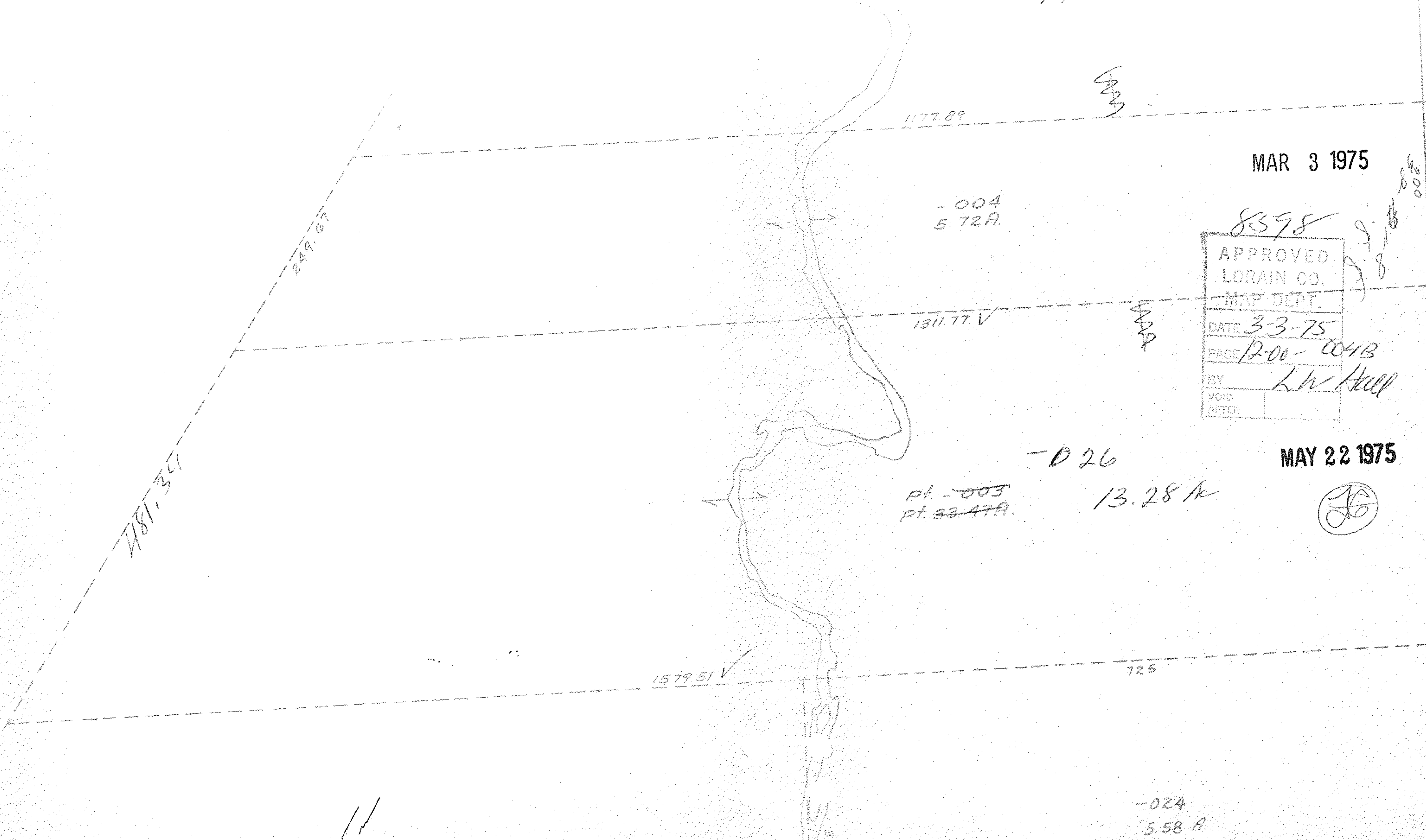


SITE 12 19

~~003~~  
~~33.47A~~  
-027  
# 20.19 Ac

8598



-004  
5.72 A.

MAR 3 1975

8398

APPROVED
LORAIN CO.
MAP DEPT.
DATE 3-3-75
PAGE 12-06-0413
BY L.W. Hill
VOID
AFTER

-026

Pt. -003  
Pt. 33.47A

13.28 A

MAY 22 1975



-024  
5.58 A.