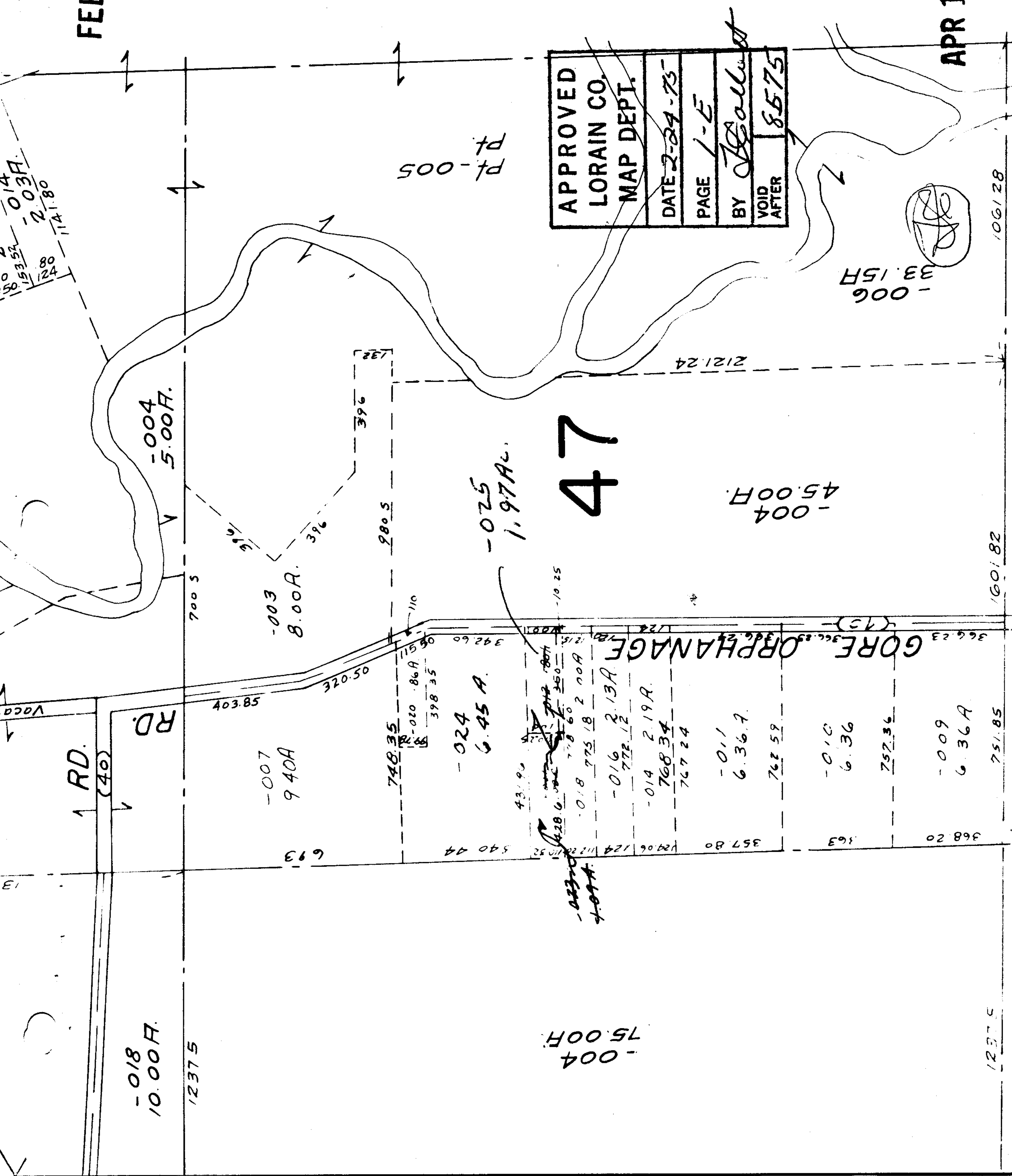


FEB 24 1975

8575

APR 16 1975



APPROVED  
 LORAIN CO.  
 MAP DEPT.

DATE 2-24-75

PAGE 1-E

BY *J. Heald*

VOID AFTER 8575

47

GORE ORPHANAGE



150  
153.52  
124

0.14  
-0.03A  
2.03A  
1141.80

-018  
10.00A.

1237.5

-007  
9.40A

693

-003  
8.00A.

748.35

-024  
6.45A.

540.44

-025  
1.97A.

-004  
75.00A.

-016  
2.13A.

428.6  
719.804  
350  
-018 778.60  
2.00A  
-018 775.18  
2.00A

-014  
2.19A.

768.34  
767.24

-011  
6.36A.

762.59

-010  
6.36

363

757.36

-009  
6.36A

368.20

1237.5

751.85

1601.82

1061.28

Pt-005  
Pt-005

2121.24

-006  
33.15A