

JAN 20 1975

8511

SEE 6-23 *

Pt. -016
Pt. 6-82A.

Pt. -014
Pt. 6-51A.

941.62
1281.68

DEC 1 1975

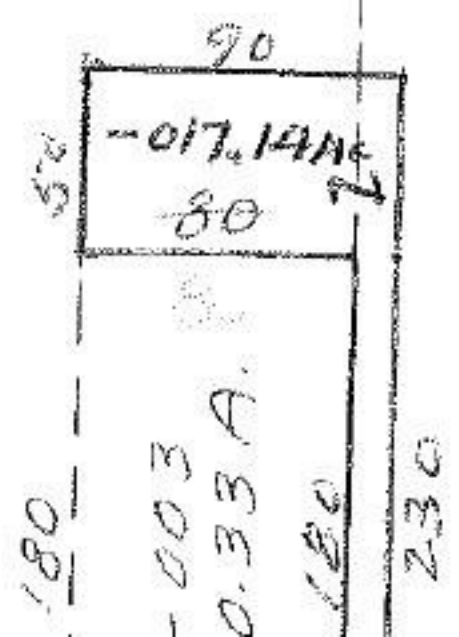


818
8-24Ac



8511

APPROVED LORAIN CO. MAP DEPT.	
DATE	1-17-75
PAGE	6-40
BY	L. W. Hall
VOID AFTER	



8-004
1-77A.

340.00