

4212 A

8482

1600 ft
-007

2.50
4.2

2350.8

-006
3141 A.

58233
57948

Rev 52

433.62

2329.8

592.51

8482

APPROVED
LORAIN CO.
MAP DEPT.

MAY 15 1975

DATE 2-21-74

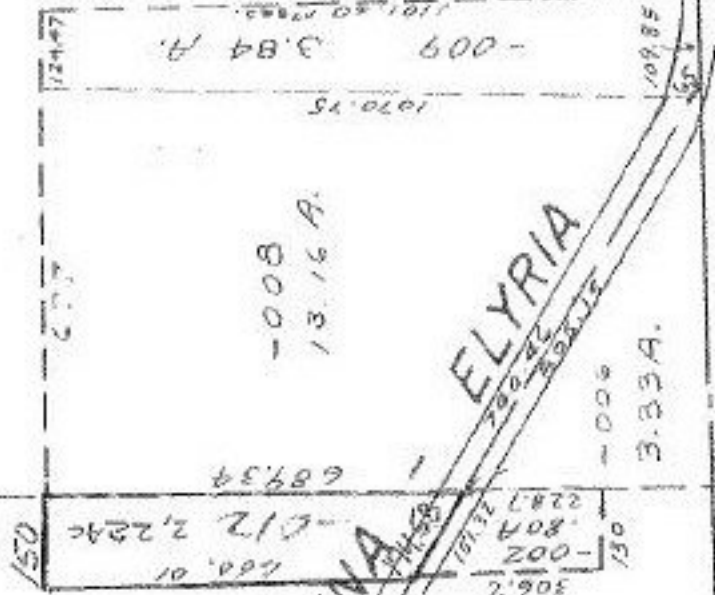
-007
96.55 A.

PAGE 16B

BY L W Hall

VOID
AFTER

011
C13
2969AC
-3191A



-008
13.16 A.

ELYRIA

-009
3.33 A.

MEDINA

DEC 31 1974

738.45
174.58
563.87

CEM - 005
100 FT. D
23 R. P1
-003
300 FT

420.0

576.55

RD 42.85

010
240
100 FT. R
240

-002
306.2
224.7
180 A
-012 2,224c

-009
3.84 A.

432

510

240

24

201

1386.0

100 FT. W

1606 FT

8040

800

1000