

84173

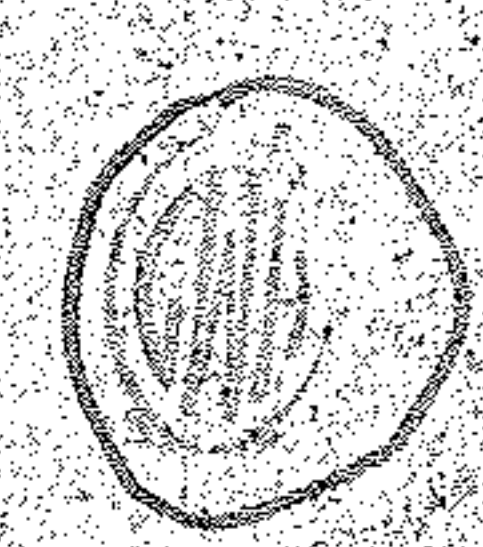
PT ~~56.75 A.~~
 PT 49.35 AC

07-00-011-103-073
 16.20 AC

DEC 30 1974

84179

APPROVED	
LORAIN CO	
MAP DEPT.	
DATE	12-30-75
PAGE	7-00-011-103-073
BY	
VOID	
AFTER	



PT ~~56.75 A.~~
 PT 49.35 AC

07-00-011-103-071
 PT 49.35 AC

62178
 07-00-011-103-070
 16.20 AC

375.82
 492.83
 241.87
 037
 32A
 175.65
 159.69
 042
 03.92
 14A
 243.10
 504
 000
 668.41
 7-00-0
 668.91
 515.52
 26.45
 065.16
 1090.00
 587.33
 473.67
 571A
 571A