

84119

NOV 18 1974

-005
28.00A

2080

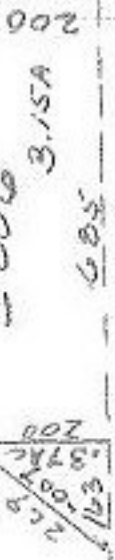
-006
25.00A

008

~~007~~
~~46.00A~~
36.48AG

84119

APPROVED
LORAIN CO.
MAP DEPT.
DATE 11-15-74
PAGE 15A
BY L. W. Hall
VOID AFTER



-002
42.00A

MAY 15 1975

18

-003
50.00A

-004
30.50A

230
396
300A
-005
396
330