

8405

NOV 8 1974

AVON SEC 3-00 063

64

ELYRIA - SHEFFIELD LAKE

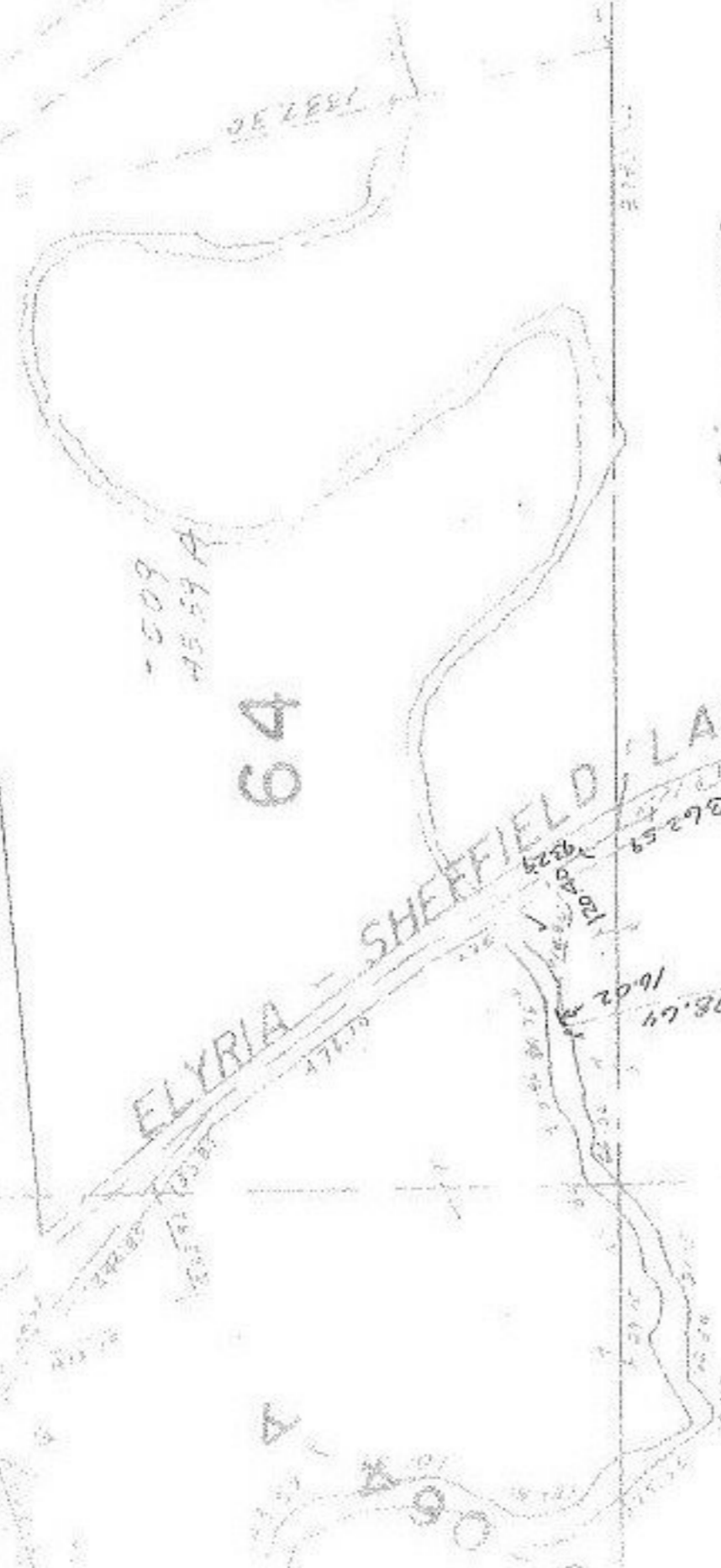
DEC 31 1975

8405

APPROVED	VOID
LORAIN CO.	AFTER
MAP DEPT.	
DATE 11-8-74	
PAGE 36	
BY L.W. Hall	

SEE 3

SHEFFIELD TWP.



1946
 824.70
 301.10
 100.40
 108.64
 362.59
 237.53
 10.52
 100.00
 500.00
 100.00
 376.19
 100.00
 376.19
 507.49

By Survey
 Schofer & Assoc
 11/8/74

RD.

