

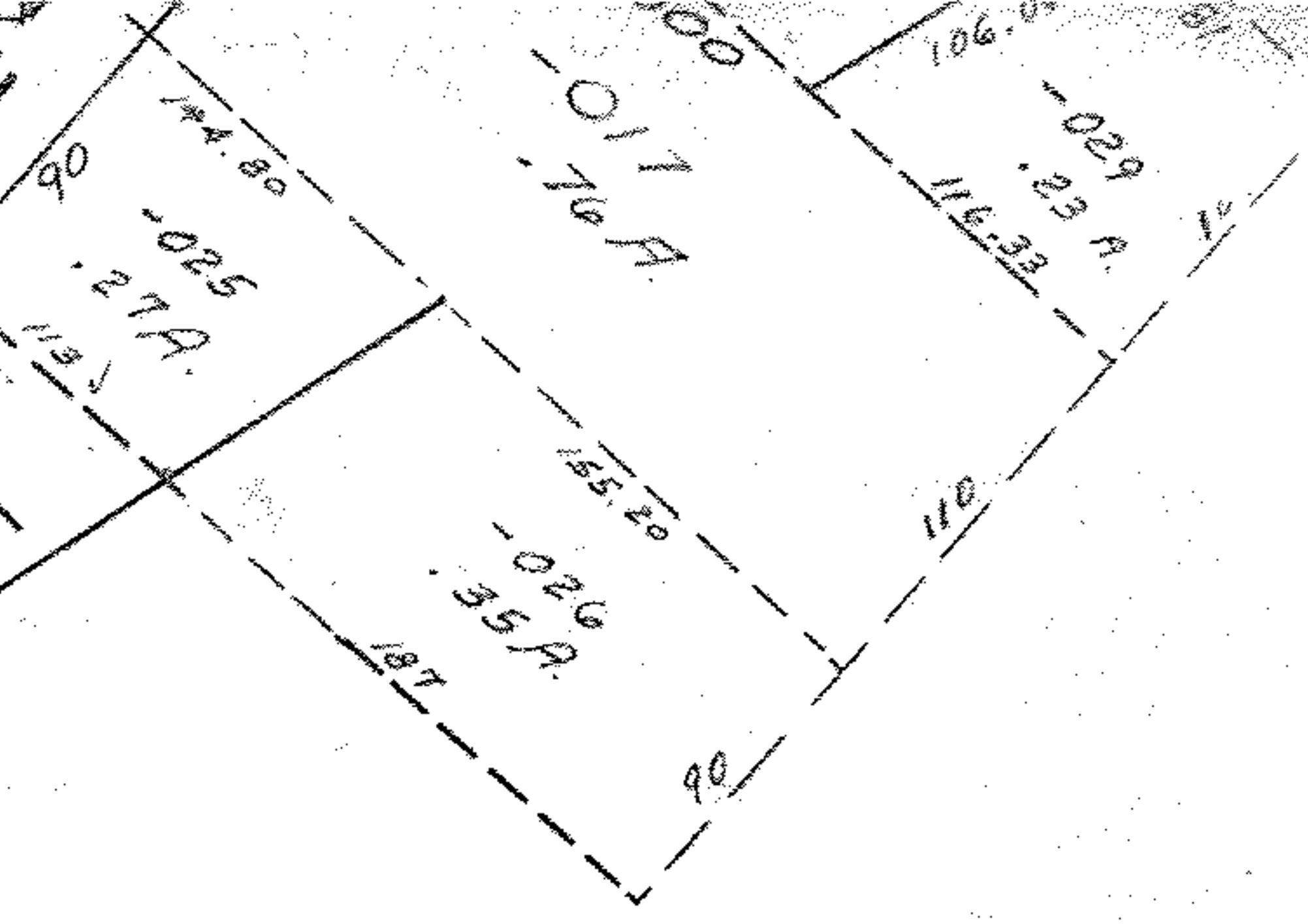
#8343

-014  
.50A

CHESNUT RIDGE

195.70  
137.80  
-044  
32 AC

206.53



-034  
25.40 P.

SEE 7-00-010-A

384.12

88°59'

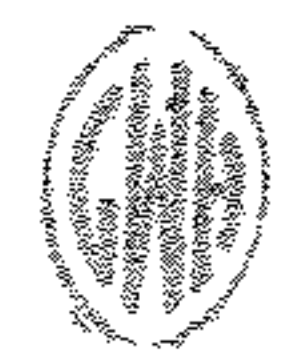
1299.88

107

618.29

#8343

APPROVED LORAIN CO. MAP DEPT.	
DATE 10-9-74	
PAGE 7-00-010-B	
BY Paul	
VOID AFTER	



OCT 11 1974

MAY 19 1975

~~042~~  
15.43 P.  
15.34 Ac.

-045  
15.02 Ac.

63.