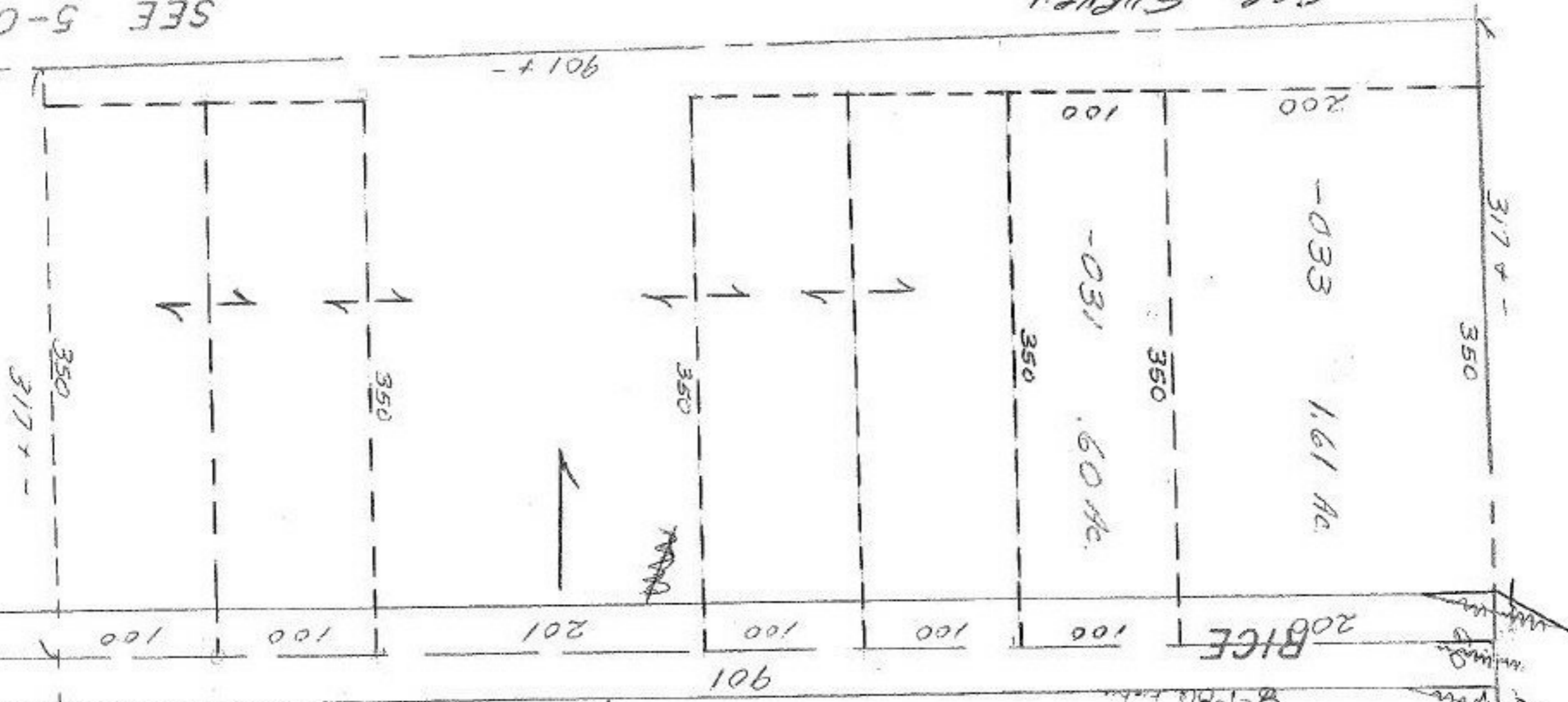


OCT 28 1974

8228

SEE 5-00-094

SEE SURVEY



DEC 31 1975

-034 45.59 AC.

-032 47.70 AC.

SPLIT #8239

~~001~~

~~48.00 AC.~~

8228

APPROVED	
LORAIN CO.	
MAP DEPT.	
DATE 9-5-74	
PAGE 5-00-095-A	
BY Paul	
VOID AFTER	

8-1-81 L.L.

SEE 1-1