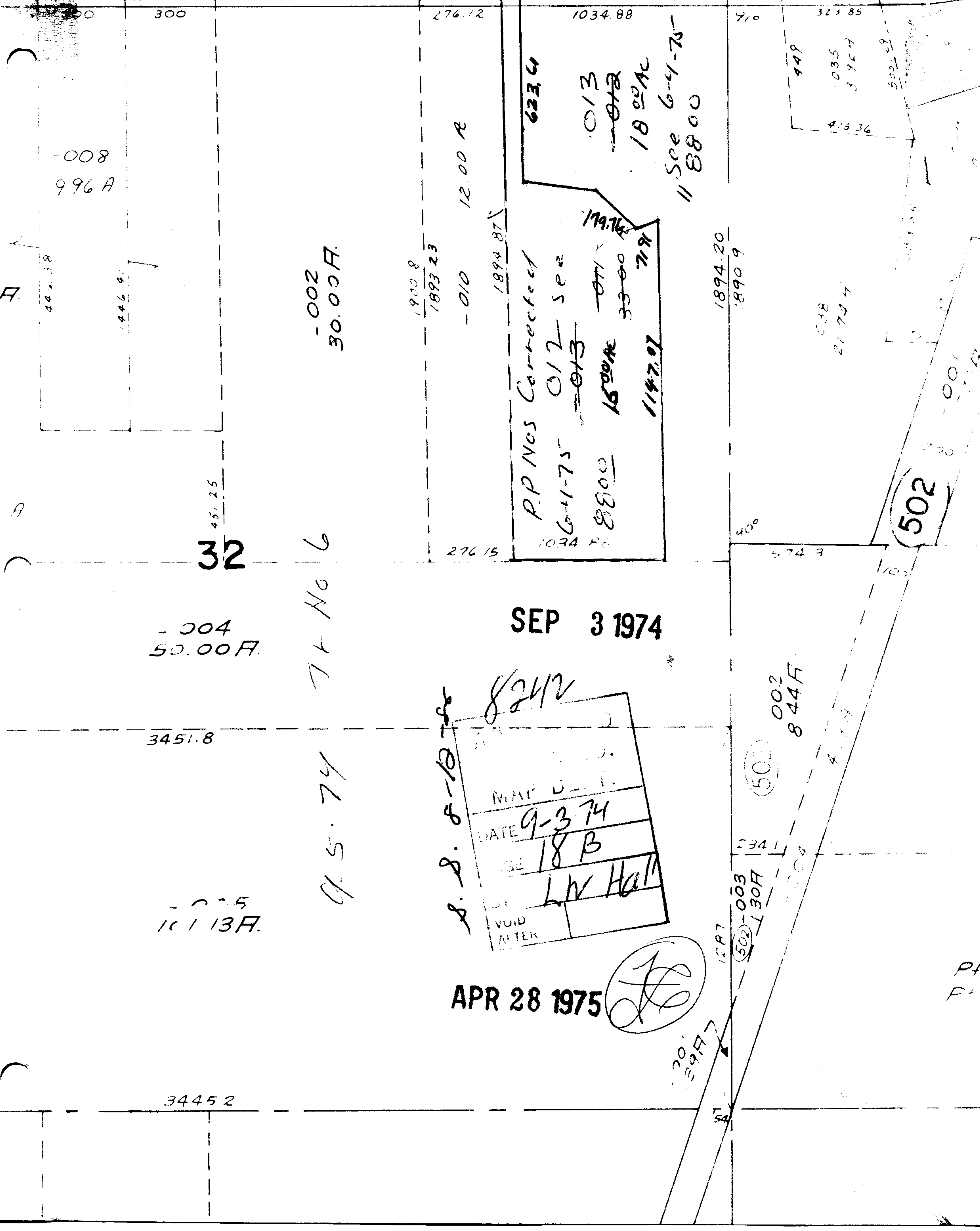


PECK - WADSWORTH

8242



59058

43013

90°

1657.9

698.18

162.80

536

-008
996 A

-002
30.00 A.

1900.8
1893.23

12.00 A

P.P. Nos Corrected
6-4-75
8800
1800 A
1147.07
719
33.00
179.76
1894.87
11
18
1800 A
11
8800
See 6-4-75

1894.20
1890.9

2174.4

323.85

449

035
392.7

500.09

413.36

32

-004
50.00 A.

SEP 3 1974

3451.8

77 No 6
Q.S. 74

S. S. 8-18-74
8242
MAP DEPT.
DATE 9-3-74
AGE 18 B
LW Hall
VOID AFTER

APR 28 1975

(Signature)

502
002
844 F.

502

234.1

502-003
130 F.

-005
101.13 F.

3445.2

Pt
Pt