

8227

SEE 4-00-024-H

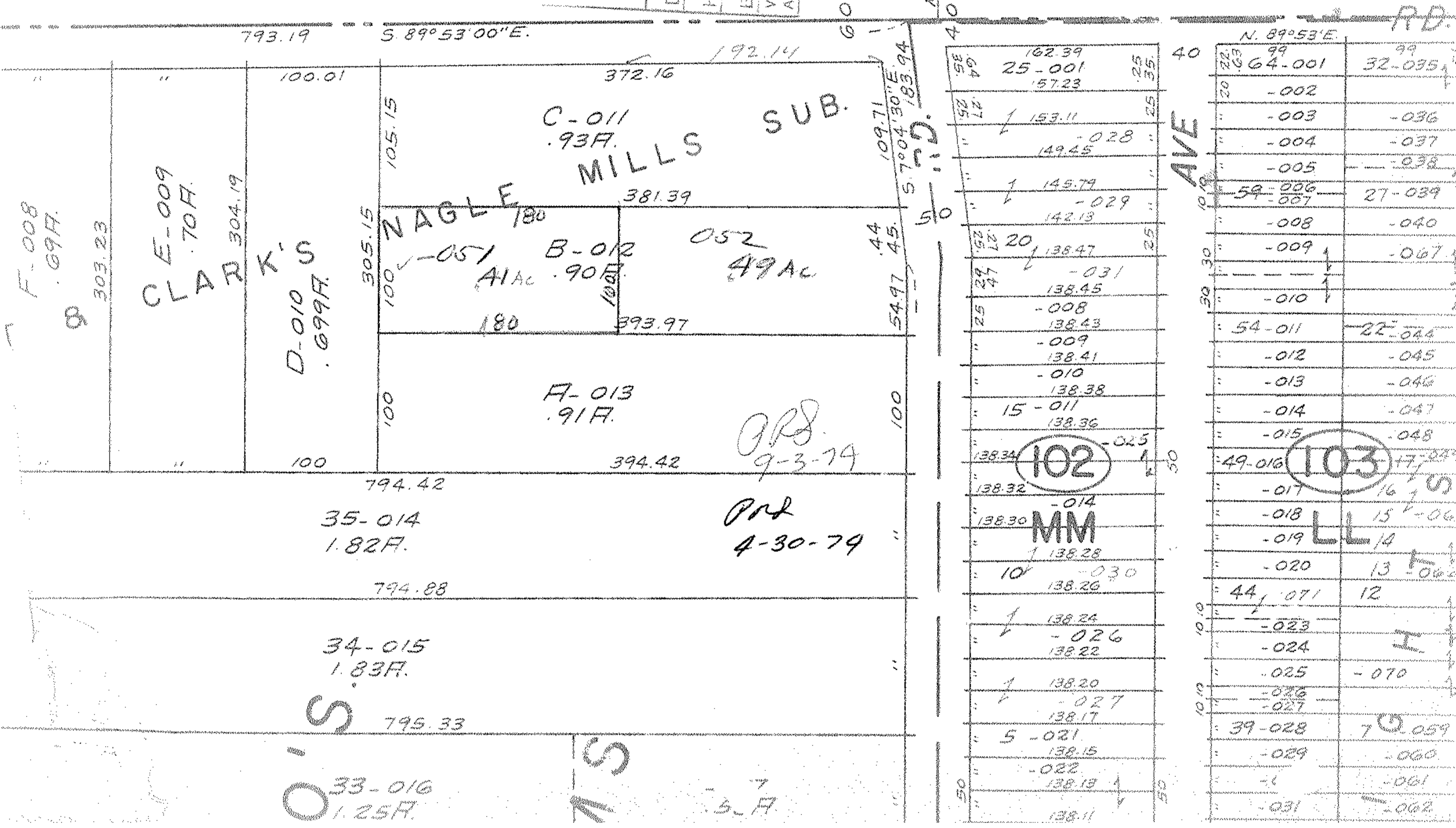
77 78-1-8

8227

APPROVED
LORAIN CO.
MAP DEPT.
DATE 8-23-74
PAGE 07-00-00 7A
BY L. W. HALL
VOID AFTER

Road Record Vol. 3

SEE 4-L



F-008
69F.

303.23

C E-009
70F.

304.19

D-010
699F.

100.01

305.15

105.15

100

100

100

794.42

35-014
1.82F.

794.88

34-015
1.83F.

795.33

33-016
1.25F.

C-011
.93F.
NAGLE MILLS SUB.

B-012
.90F.
A1 AC

A-013
.91F.

052
49 AC

PR
9-3-74

PR
4-30-79

O'S

M'S

3 F.

58	162.39	25	35
64	25-001	25	35
25	157.23	25	35
27	153.11	25	35
"	-028	"	"
"	149.45	"	"
1	145.79	"	"
"	-029	"	"
"	142.13	"	"
20	138.47	25	35
27	-031	"	"
29	138.45	"	"
25	-008	"	"
25	138.43	"	"
"	-009	"	"
"	138.41	"	"
"	-010	"	"
"	138.38	"	"
15	-011	"	"
"	138.36	"	"
138.34	-025	"	"
138.32	-014	"	"
138.30	MM	"	"
1	138.28	"	"
10	-030	"	"
"	138.26	"	"
1	138.24	"	"
"	-026	"	"
"	138.22	"	"
1	138.20	"	"
"	-027	"	"
"	138.17	"	"
5	-021	"	"
"	138.15	"	"
"	-022	"	"
"	138.13	"	"
50	138.11	"	"

40	22	99	99
20	64-001	32-035	
"	-002		
"	-003	-036	
"	-004	-037	
"	-005	-038	
50	59-006	27-039	
10	54-007		
"	-008	-040	
30	-009	-067	
50	-010		
"	54-011	22-044	
"	-012	-045	
"	-013	-046	
"	-014	-047	
"	-015	-048	
50	49-016	17-049	
"	-017	16-050	
"	-018	15-051	
"	-019	14-052	
"	-020	13-053	
10	44-071	12	
"	-023		
"	-024		
"	-025	-070	
10	-026		
10	-027		
"	39-028	7-059	
"	-029	-060	
"	-030	-061	
"	-031	-062	