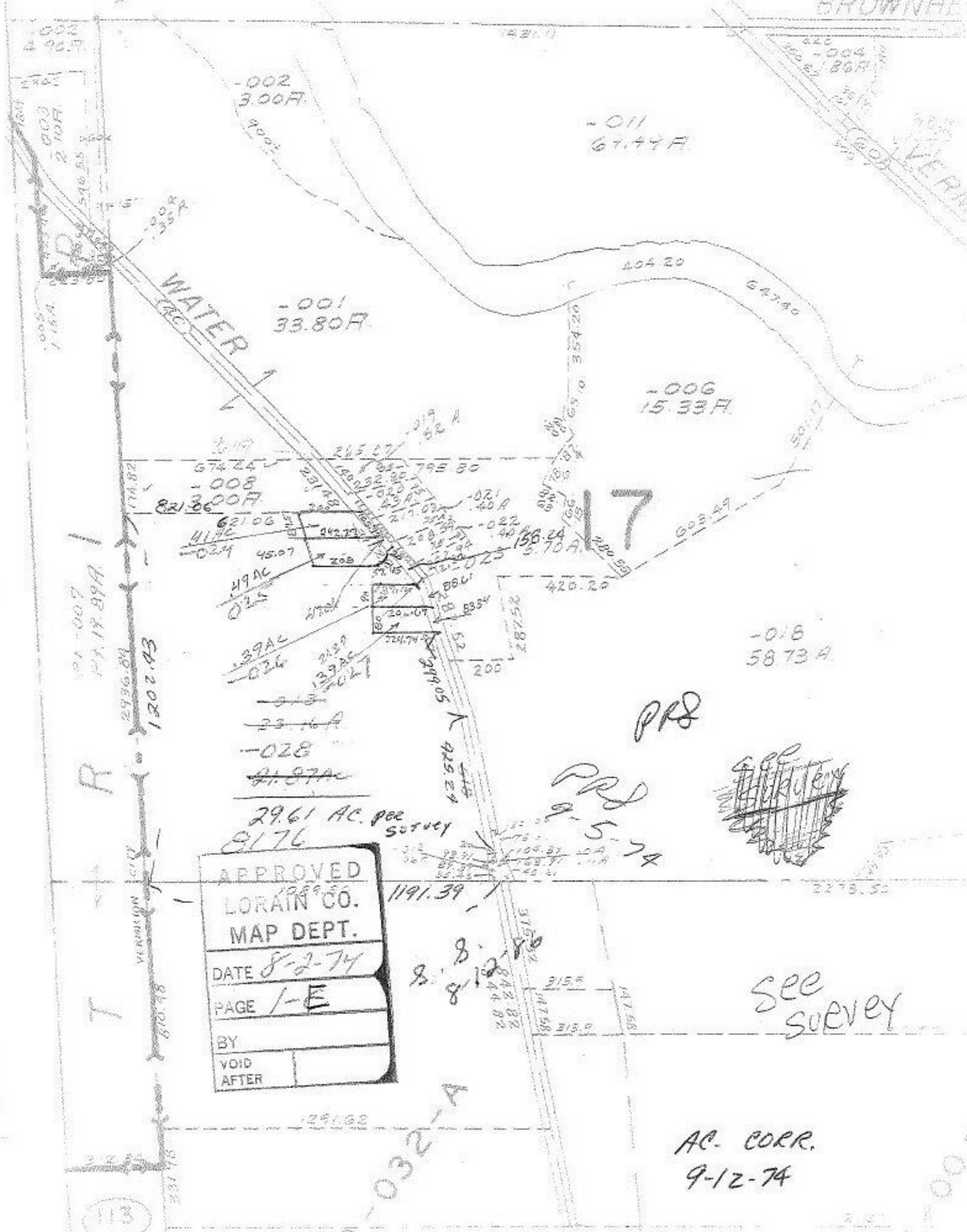


8176

BROWNHE



PA-007
 17.19.89A
 R

T

APPROVED	
LORAIN CO. MAP DEPT.	
DATE	8-2-74
PAGE	1-E
BY	
VOID AFTER	

29.61 AC. per
 survey
 8176

PRR

PRR
 9-5-74

~~see survey~~

see
 survey

AC. CORR.
 9-12-74

0-032-A

