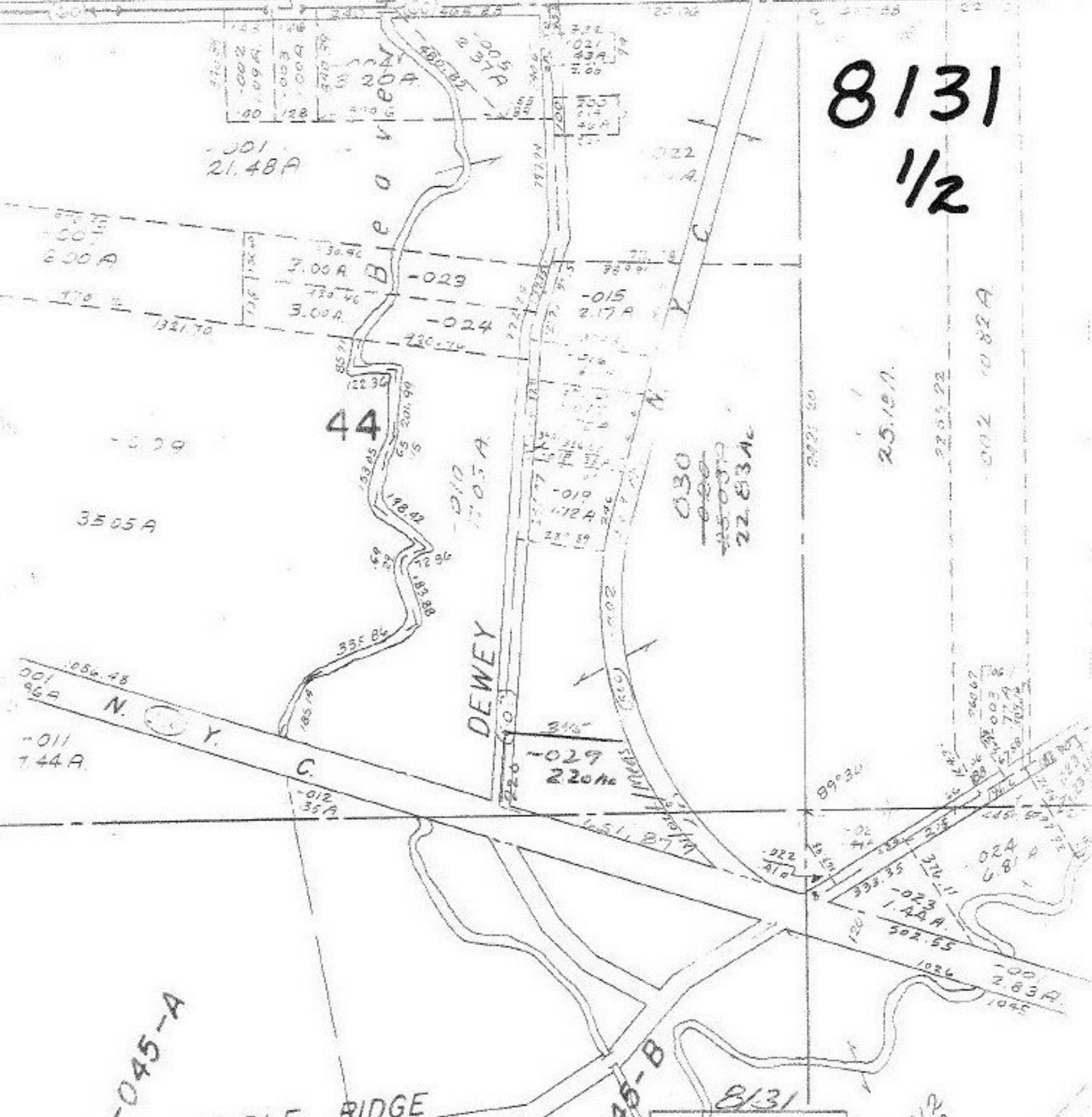


KERMAN

RD.

8131  
1/2



SEE 5-00-045-A

45

AUG 9 1974

SEE 5-00-045-B

8131

APPROVED
LORAIN CO.
MAP DEPT.
DATE 7-16-74
SHEET 5C + 500-045-B
BY L.W. Hall
VOID AFTER

5-C

002 082A

25.187

22.0522

030  
22.83Ac

DEWEY

MIDDLE RIDGE

N. Y. C.

44

001  
21.48A

2.00A

3.00A

2.17A

3505A

001  
86A  
1.44A

220Ac

024  
6.81A

000  
2.83A

012  
16.7A

365A