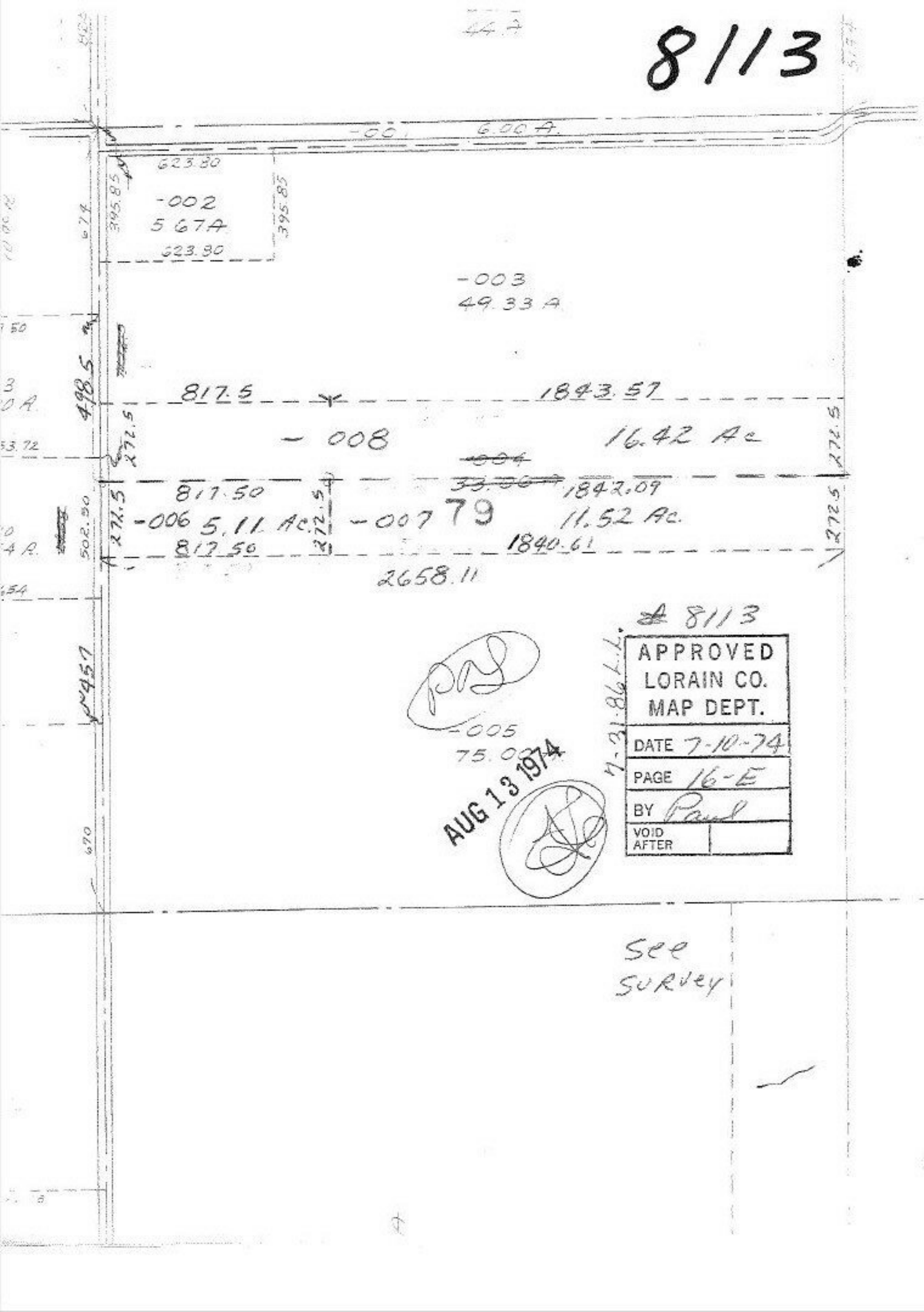


8113

447

5174



623.80
 -002
 567A
 623.80

-003
 49.33 A

817.5 1843.57

-008 16.42 Ac

817.50 1842.09
 -006 5.11 Ac -007 79 11.52 Ac
 817.50 1840.61

2658.11

Paul

-005
 75.0
 AUG 13 1974

Paul

8113

APPROVED LORAIN CO. MAP DEPT.	
DATE	7-10-74
PAGE	16-E
BY	<i>Paul</i>
VOID AFTER	

7-31-86 L.L.

see
 survey