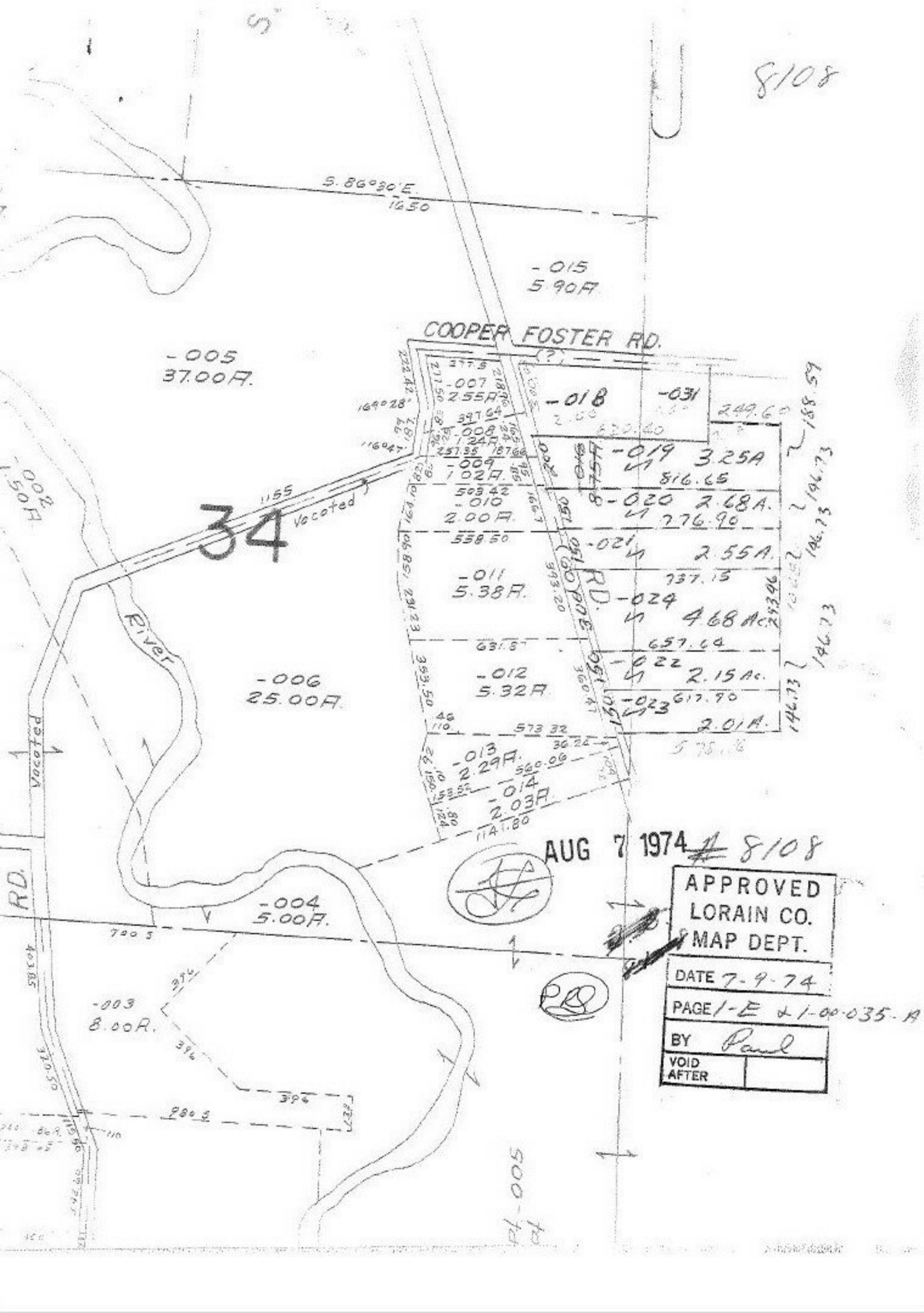


8108



S. 86°20'E.
16.50

- 015
5.90A.

- 005
37.00A.

COOPER FOSTER RD.

- 018
2.00

- 031
249.60

- 019 3.25A
816.65

- 020 2.68A.
776.90

- 021 2.55A.
737.15

- 024 4.68A.
657.64

- 022 2.15A.
617.90

- 023 2.01A.
578.8

- 011
5.38A.

- 012
5.32A.

- 013
2.29A.

- 014
2.03A.

- 006
25.00A.

- 004
5.00A.

- 003
8.00A.

AUG 7 1974 # 8108

APPROVED
LORAIN CO.
MAP DEPT.

DATE 7-9-74

PAGE 1-E & 1-00-035-A

BY Paul

VOID
AFTER

PT-005
PT