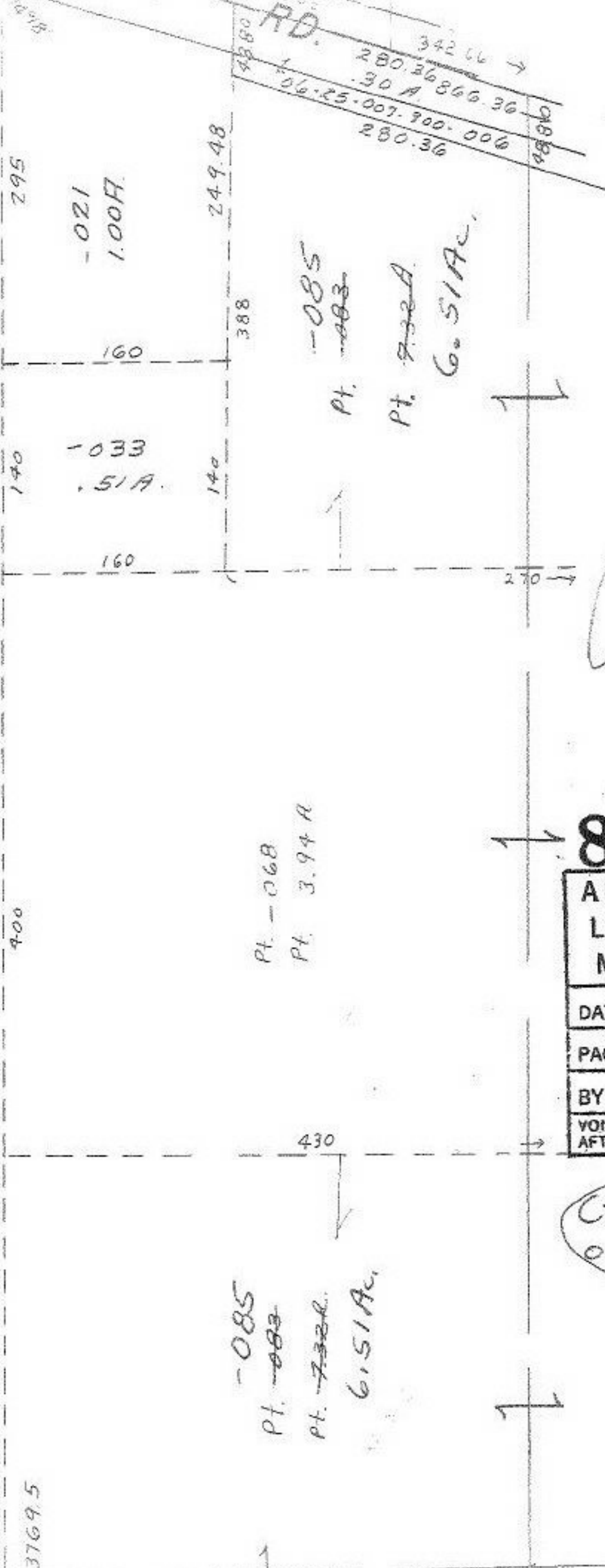


Pt. - 018
Pt. 11.27H.

1977.6
3769.5



RD.
 342.66 →
 280.36
 30 A 866.36
 06-25-007-900-006
 280.36
 488.60

-021
1.00H.

-033
.51A.

-085
Pt. -083
Pt. 7.32A
6.51Ac.

Pt. -068
Pt. 3.94A

-085
Pt. -083
Pt. 7.32A
6.51Ac.

AUG 9 1974

8082

APPROVED LORAIN CO. MAP DEPT.	
DATE 6-21-74	
PAGE 6-125	
BY <i>Paul</i>	
VOID AFTER	8082

Change Acres
on Page 6-143
Paul.