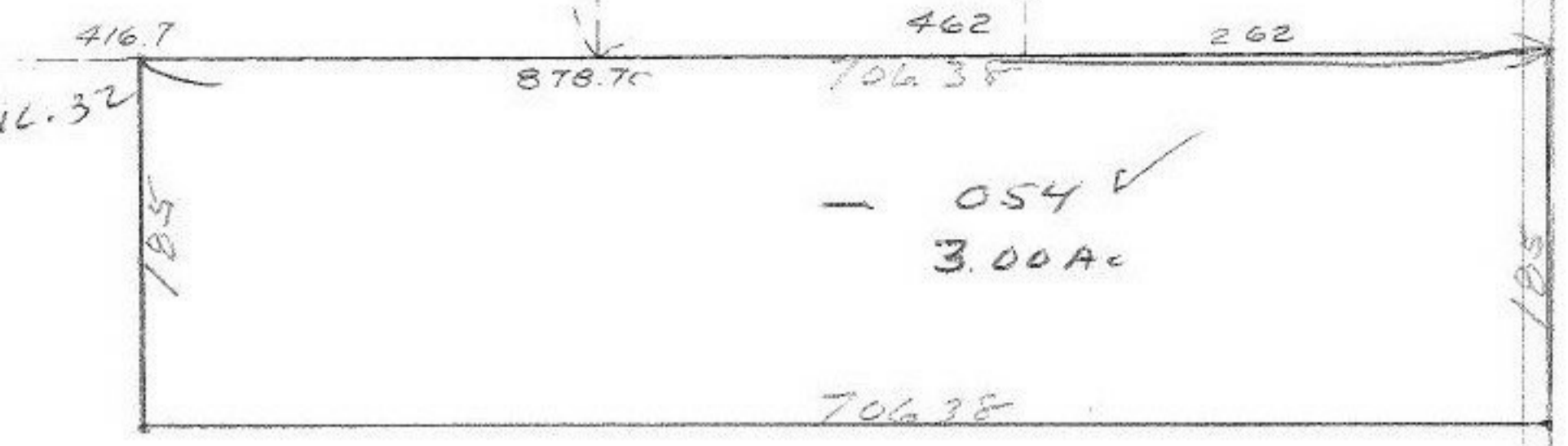


8035  
1.04



055 ✓

~~030~~ 12.00 Ac  
~~15.00 Ac~~

$$\begin{array}{r} 878.70 \\ 706.38 \\ \hline 172.32 \end{array}$$

8035

APPROVED	
LORAIN CO.	
MAP DEPT.	
DATE	6-7-74
PAGE	4-00-026F
BY	LW Hall
VOID AFTER	

PRS

AUG 8 1974



WILLIAMS

937.70

SEE 4-L