

7/11/74

8025

SEE

PL

150
-011
.21A
150

6.91217 60

78°26'



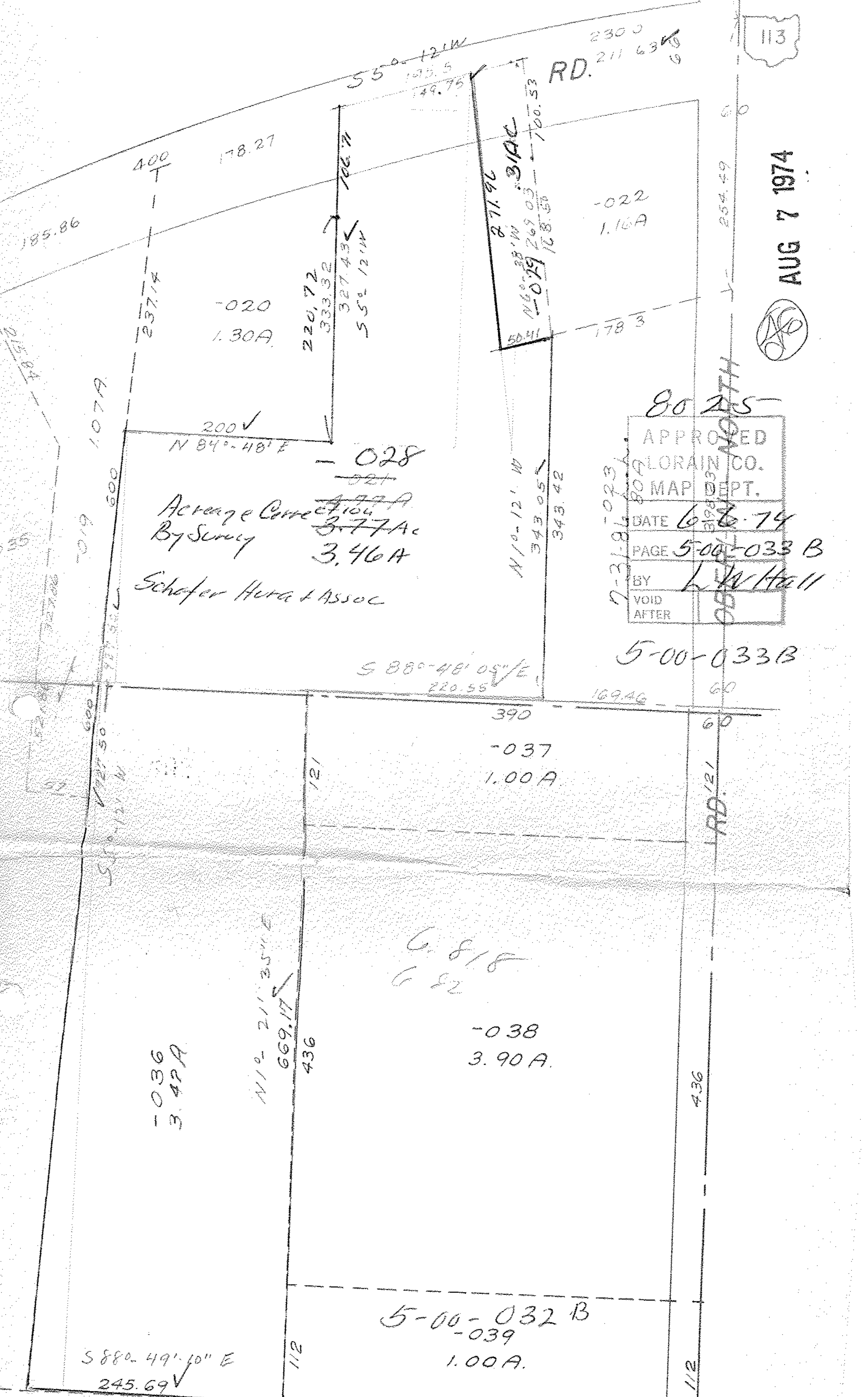
AUG 7 1974



8025

APPROVED
LORAIN CO.
MAP DEPT.
DATE 6-6-74
PAGE 5-00-033 B
BY L. W. Hall
VOID AFTER

5-00-033B



-020
1.30A

220.72
333.32
327.43
55° 12' W

871.96
N 60°-28' W
-029
269.03
100.53
RD.

-022
1.16A

200
N 84°-48' E

-028
Acresage Correction
By Survey
3.77 Ac
3.46 A

Schofer Huta & Assoc

S 88°-48' 05" E
220.55

-037
1.00 A

G. S. / S
G. S.

-038
3.90 A.

-036
3.42 A

N 10° 21' 35" E
669.17
436

5-00-032 B
-039
1.00 A.

S 88°-49' 10" E
245.69