

7996

215.29 450.1
666

A

-010
1.71 A

-006
6.91 A

666
-009 2.29 A
666

491.97

-004
4.67 A

-007
5.02 A

-001
47.22 A

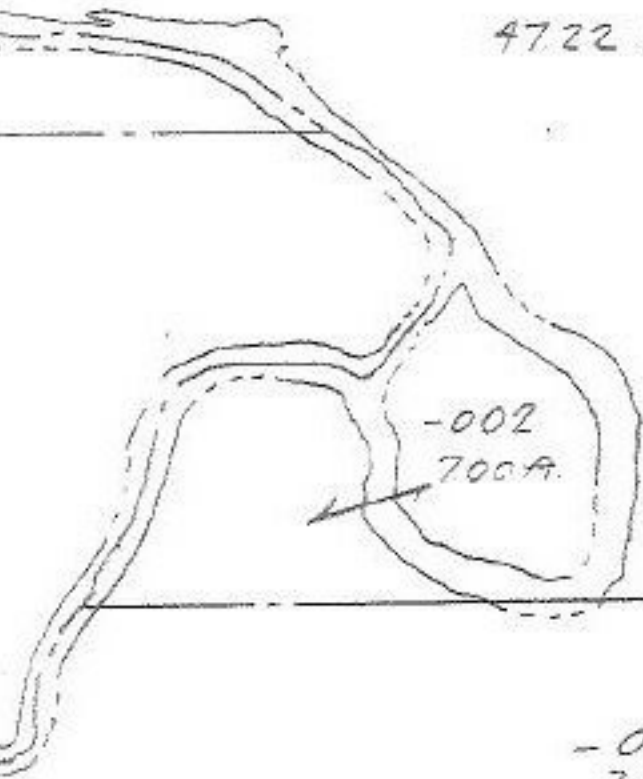
35 516

491.47
799.79

-005
2.11 A

012
008

11.51 A
15.70 AC



-002
700 A

7996
 APPROVED
 LORAIN CO.
 MAP DEPT.
 DATE 5-28-74
 PAGE 19C
 BY L.V.H.
 VOID AFTER

786.37
-011 3.87 AC
787

-001
38.95 A

PRS



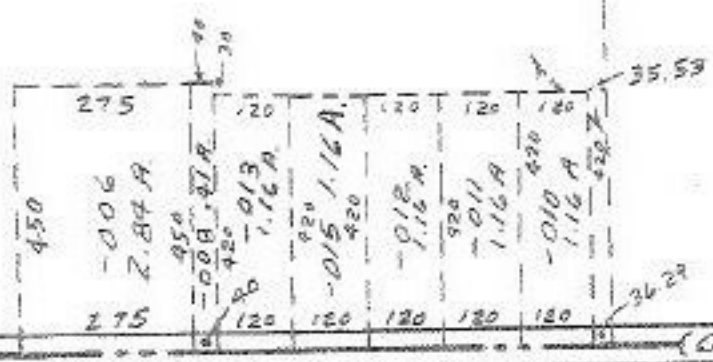
AUG 7 1974

FOSTER RD

34

-004
31.91 A

-016
62.05 A



306.24
-005
1.05 A

RD.

18

THRU 12, 34, 35