

7991

014  
~~012~~  
~~001~~  
~~000 A.~~  
~~1888~~  
17.85AC

See Also Split # 7954

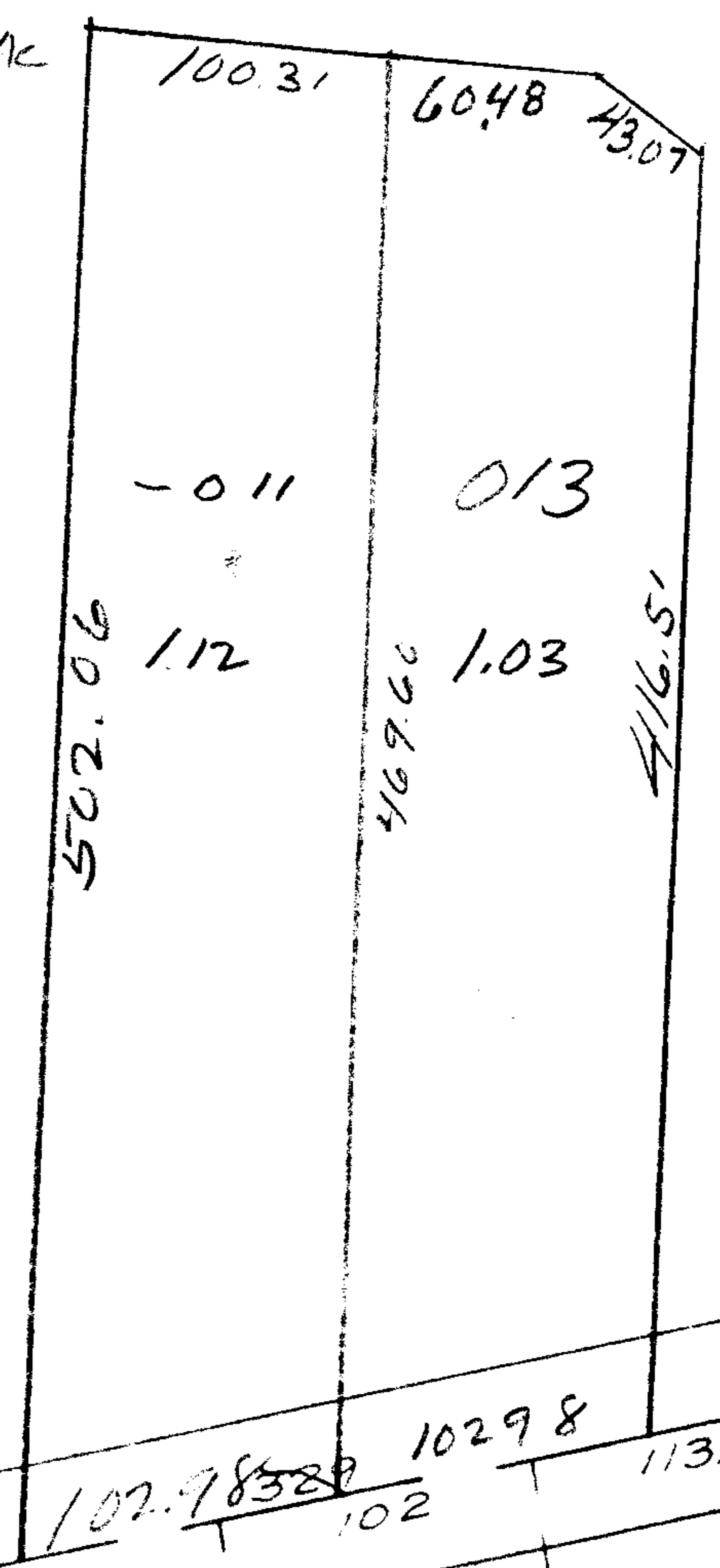
7991

APPROVED
LORAIN CO.
MAP DEPT.
DATE 5-24-74
PAGE 500-094A
BY L.W. Hall
VOID AFTER

*(Signature)*

AUG 7 1974

*Prod*



16°30'  
33 20 80

MIDDLE RIDGE

572.6'  
N 77°19'E

102.98328 1029.8 113.5 20

007 48A 204 008 47A 170 285.85