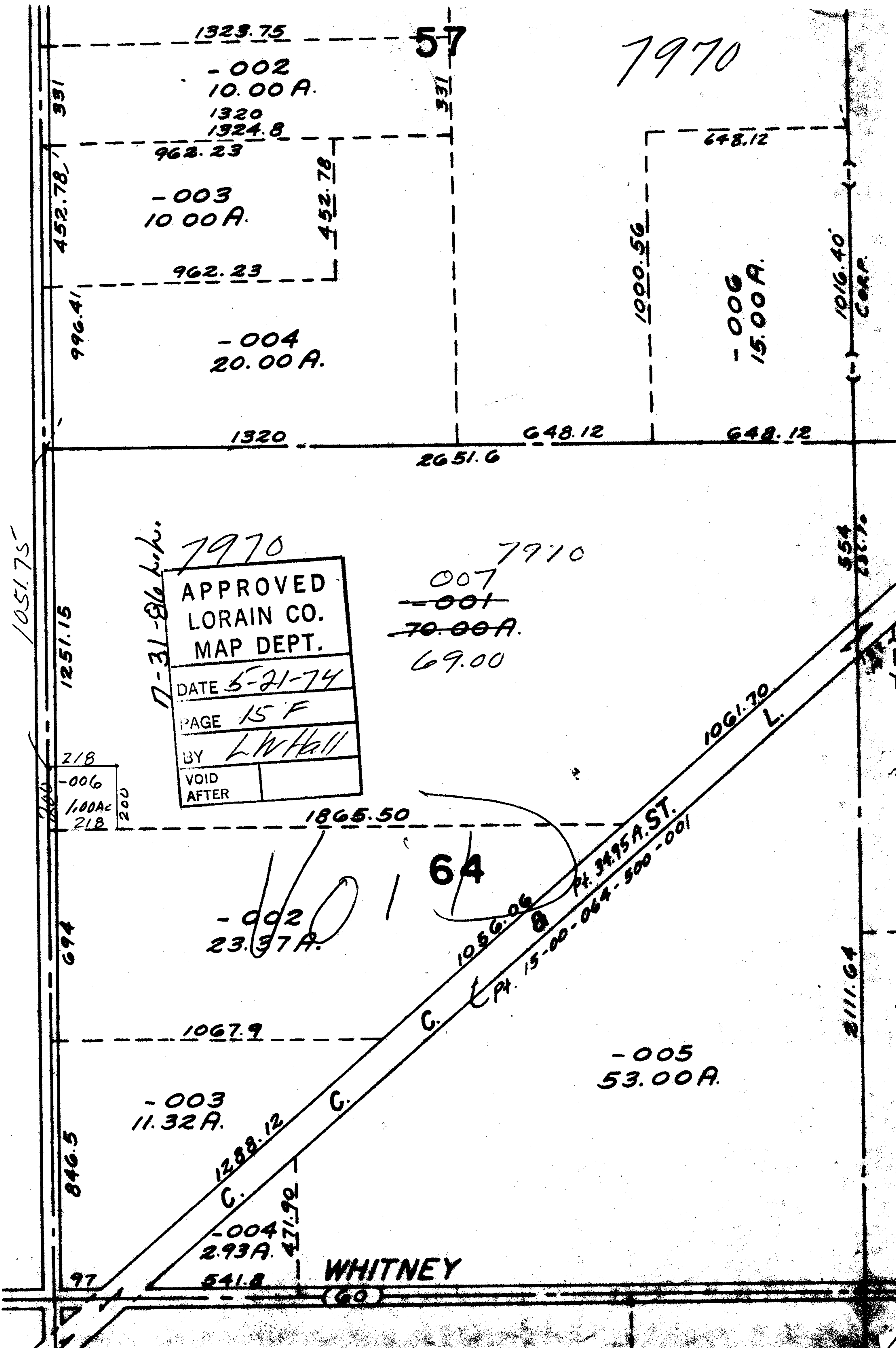


7970

57



17-31-86 hwh

7970  
 APPROVED  
 LORAIN CO.  
 MAP DEPT.  
 DATE 5-21-74  
 PAGE 15 F  
 BY LWHall  
 VOID AFTER

7970  
 007  
~~001~~  
~~70.00 A.~~  
 69.00

64

WHITNEY  
(60)

1051.75

452.78

996.41

1251.15

218

1.00Ac  
218

694

846.5

97

1323.75

-002  
10.00 A.

1320  
1324.8

962.23

-003  
10.00 A.

962.23

-004  
20.00 A.

1320

2651.6

648.12

648.12

1865.50

-002  
23.37 A.

1067.9

-003  
11.32 A.

1288.12

-004  
2.93 A.

541.8

471.92

1056.06

C.

C.

C.

3475A ST.

15-00-064-500-001

1061.70 L.

-005  
53.00 A.

3111.64

554  
231.75

1016.40  
CORP.

1000.56

-006  
15.00 A.