

NO

7907

AKINS

(60)

702.11
52
752.3

237 188.57
-005 188.57
1.00A 188.57
237

270 177.12 702.63

435.7
-006 435.7
1.00A 435.7
100

100 100
-010 1.00A
-011 1.00A
435

363
-002 1.50A
363

423.5

120

363
-004 1.00A
120 55.55

175.66

175.66

195.13

275

125

7907

APPENDIX
LOCAL
MAP

DATE 4-25-74

PAGE 12 F

BY L W Hall

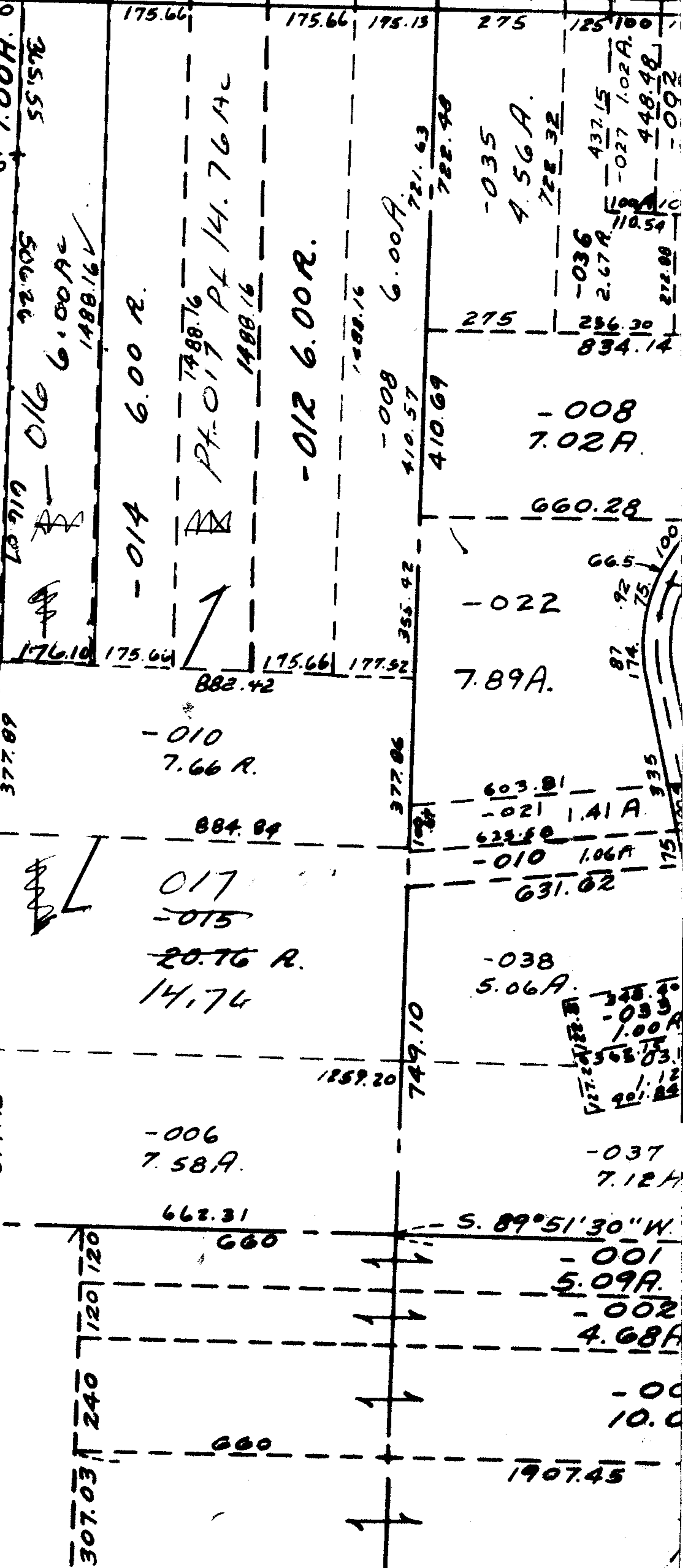
VOID
AFTER

-001
77.84A.

S.S.
8-5-82

-003
23.66A.

[Handwritten signature]



972.18
964.58

89°18'
7.60

871.20 872.95

991.98

307.03 240 120 120

662.31
660

5.89°51'30\"/>

-001

5.09A.

-002

4.68A.

-00

10.0

1907.45