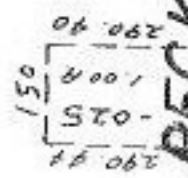
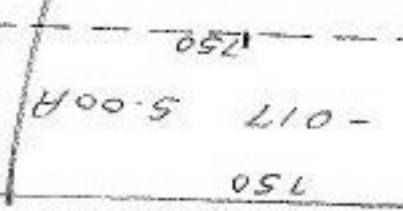
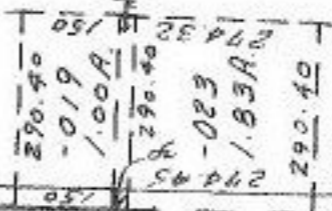
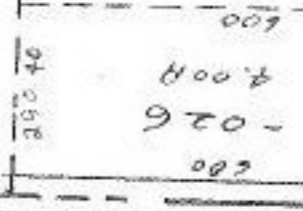
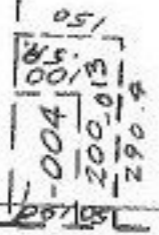
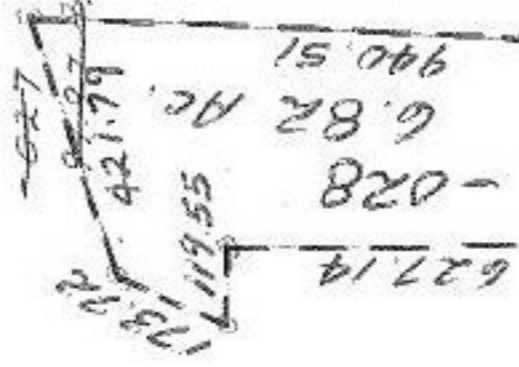
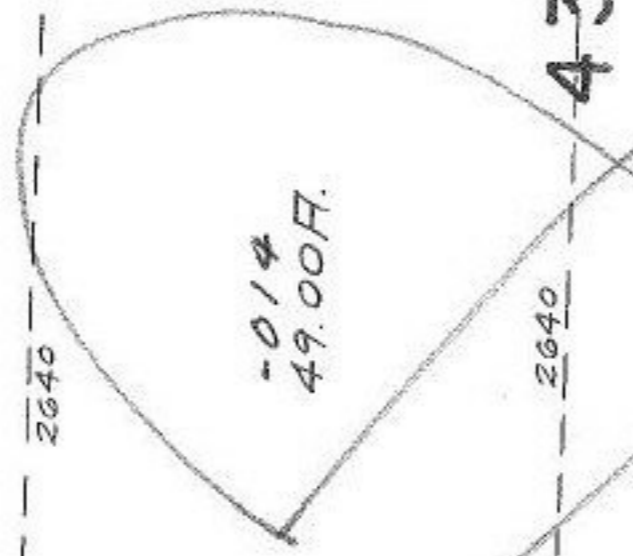


#7862

1012.44

-022
38.50 A.



PECK - WADSWORTH

VOID

#7862

APPROVED
LORAIN CO.
MAP DEPT.
DATE 4-4-74
PAGE 18-A
BY Paul
VOID AFTER

520.12
-011
4.00 A.

615.43
430.23
960.0

RD.

675

290.40

680
-026
7.00 A.
100

290.40
-019
1.00 A.
290.40

290.40
-023
1.83 A.
290.40

150

1250

330.40
149.60
150

(GO)

14.57

300
8452.78

615.43

627
421.79

940.51

-028
6.82 AC.

627.14

119.55

825

43

2640

#7862

APPROVED
LORAIN CO.
MAP DEPT.

DATE 4-4-74

PAGE 18-A

BY Paul

VOID
AFTER

335

960.0

520.12

-011

4.00 A.

335