

001  
24.45 AC

021  
32.93

7837

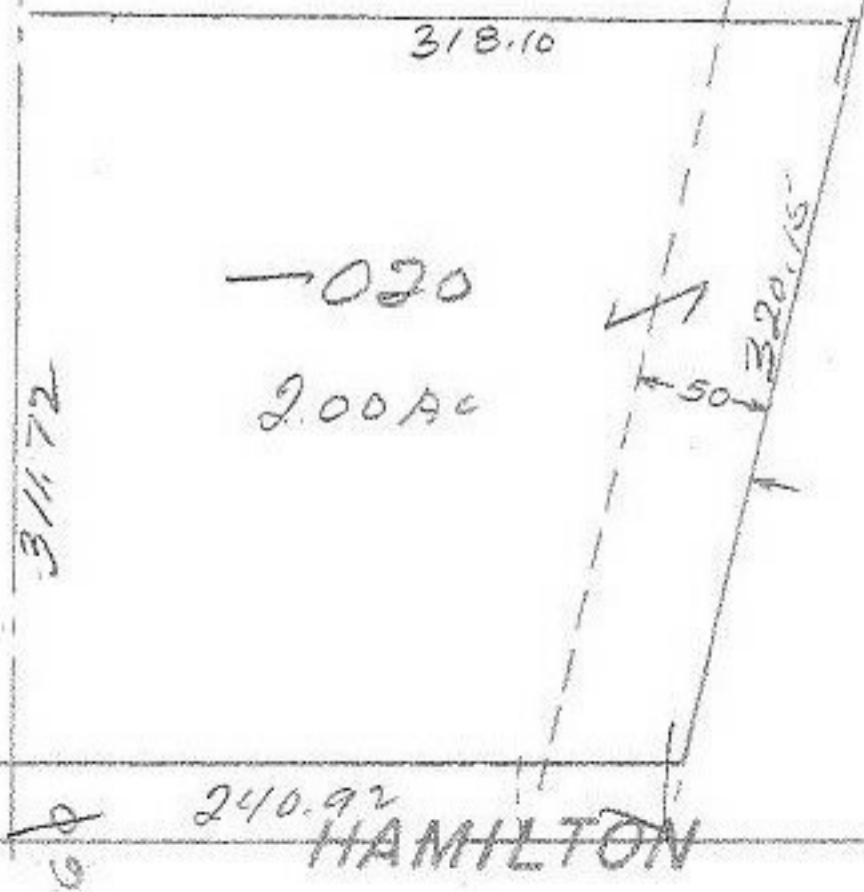
APPROVED LORAIN CO. MAP DEPT.	
DATE	3-26-74
PAGE	09-06-093A
BY	L. W. Hall
VOID AFTER	

D.S.  
7-29-86

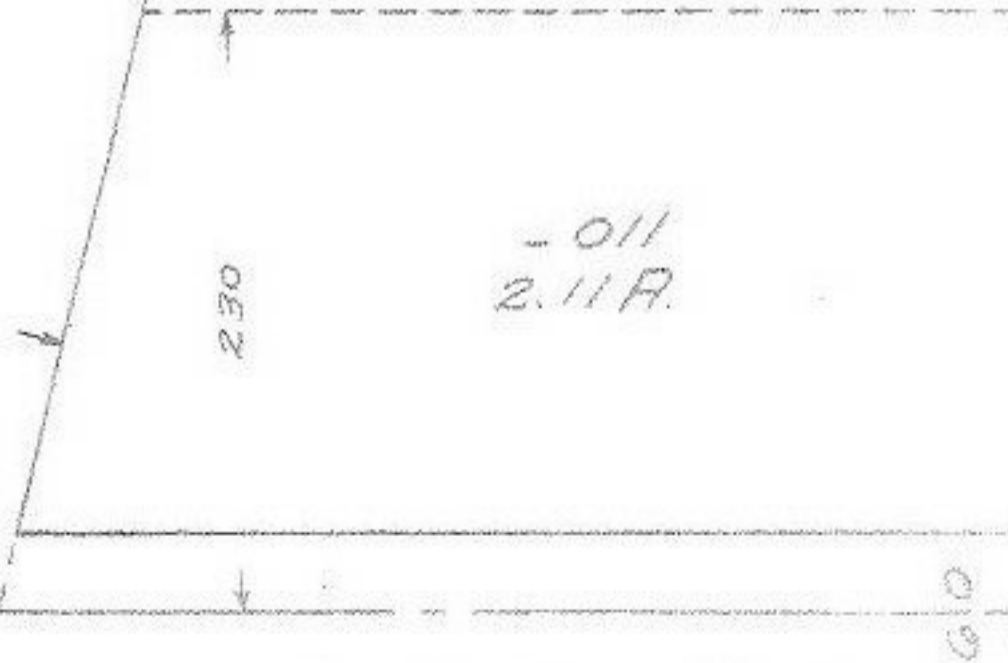
002  
10.48 AC

004  
4.17 AC

PS 8



150  
L.  
W.  
V.



011  
2.11 AC