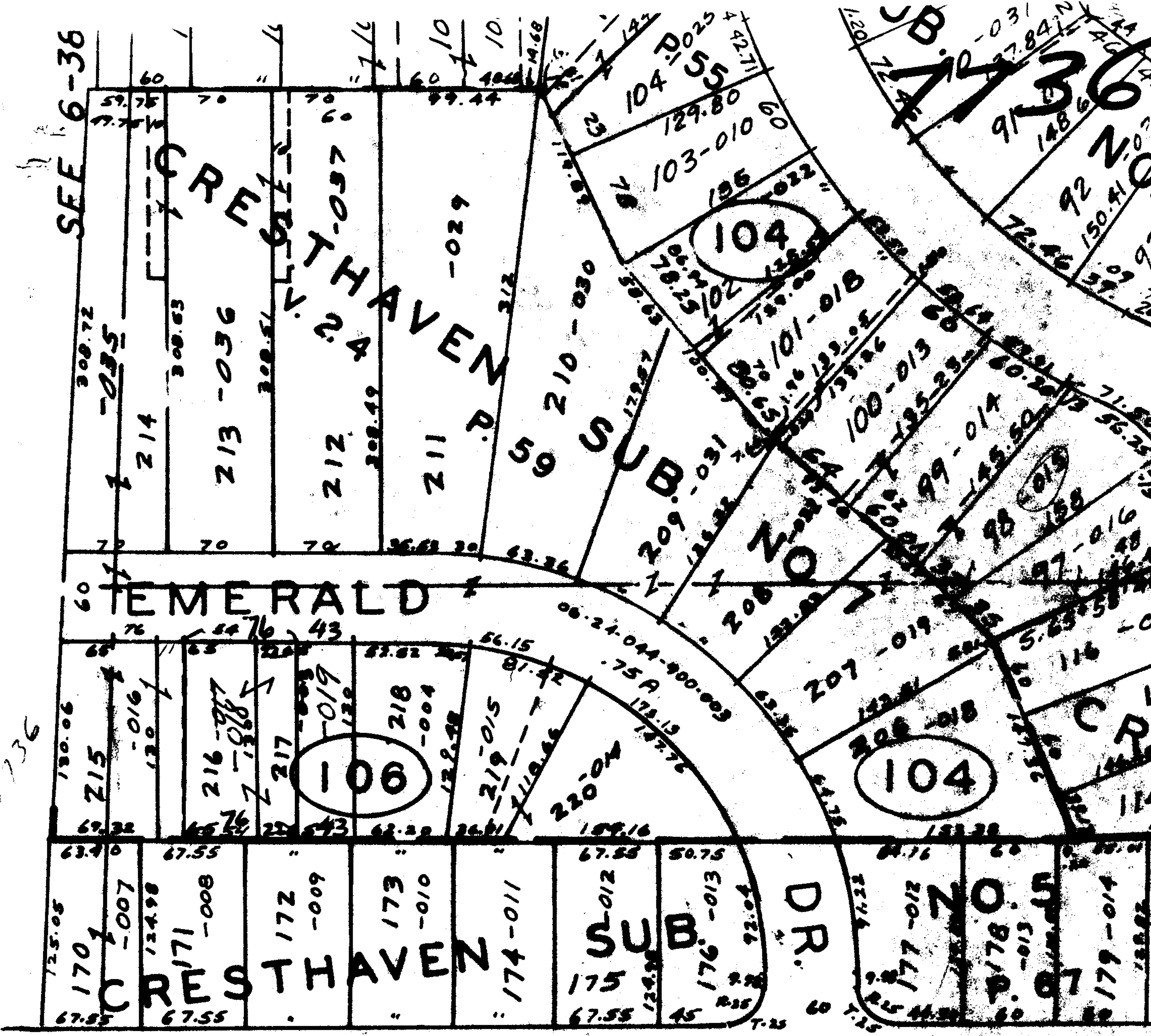
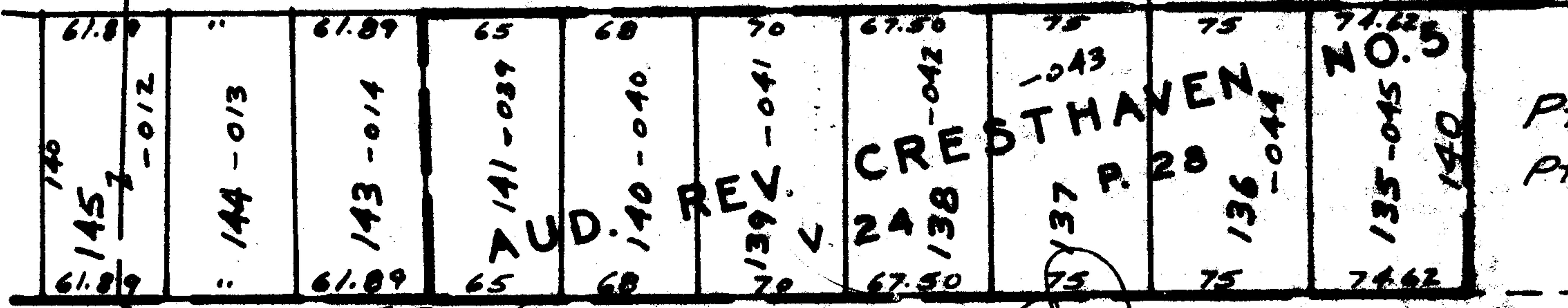


SEE 6-36



V. 23 GALAXY Pt. 06-24-044-900-002 Pt. 2.75A



7736

APPROVED LORAIN CO. MAP DEPT.	
DATE	2-4-74
PAGE	6-39
BY	L. W. Hall
VOID AFTER	

65
22
43

1593.24

[Handwritten signature]