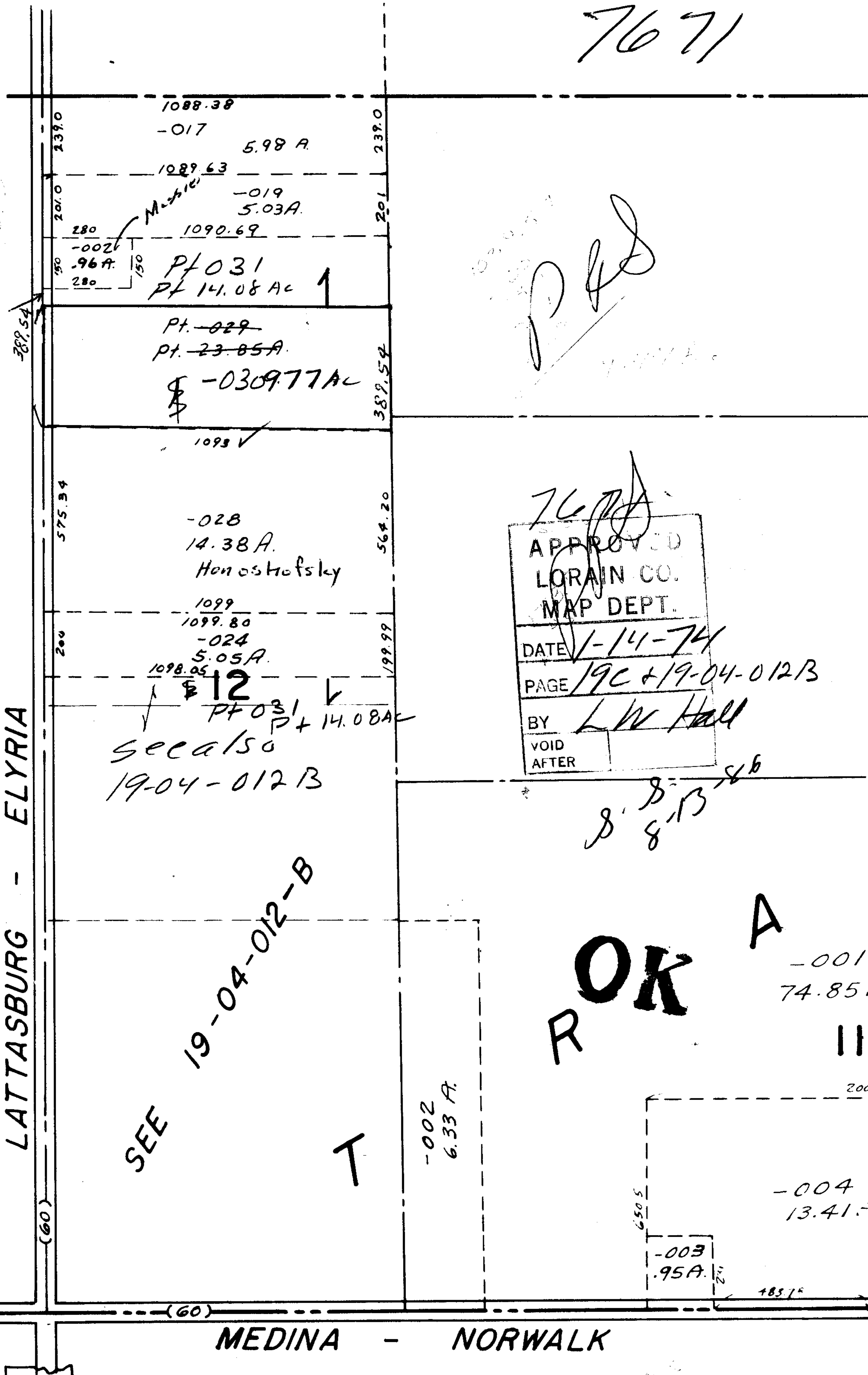


7671



60

109.3

239.0

201.0

150

389.54

575.34

200

(60)

1088.38

-017

5.98 A.

1089.63

-019

5.03 A.

1090.69

280

-002

.96 A.

280

Pt 031  
Pt 14.08 AC

Pt. 029  
Pt. 23.85 A.

-0309.77 AC

1098 ✓

-028

14.38 A.

Honostofsky

1099

1099.80

-024

5.05 A.

1098.05

12

Pt 031  
Pt 14.08 AC

See also

19-04-012 B

SEE 19-04-012-B

T

-002  
6.33 A.

7671

APPROVED  
LORAIN CO.  
MAP DEPT.

DATE 1-14-74

PAGE 19C + 19-04-012 B

BY L W Hall

VOID AFTER

R OK A

-001  
74.85

-004  
13.41

-003  
.95 A.

18

MEDINA - NORWALK

6-5-68