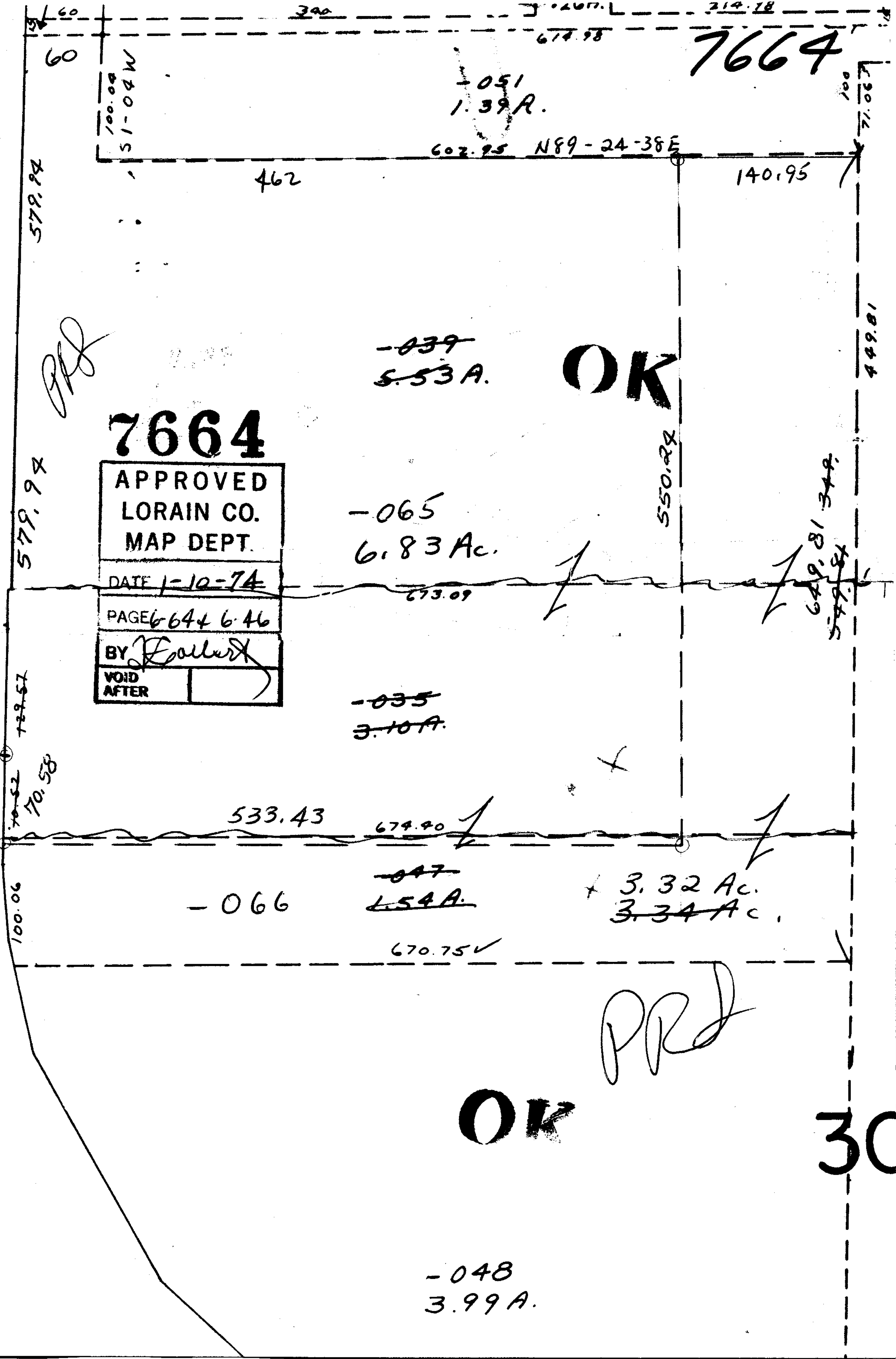


51
240.47
LORAIN
144.29
96.19
100
5 L.V.D.
27.82



7664

APPROVED
LORAIN CO.
MAP DEPT.
DATE 1-10-74
PAGE 6644 6.46
BY J. Haller
VOID AFTER

~~-039~~
5.53 A.

OK

-065
6.83 Ac.

~~-035~~
3.10 A.

-066

~~-047~~
L.54 A.

+ 3.32 Ac.
~~3.34 Ac.~~

OK

-048
3.99 A.

30

7664

100.00
S 1-04 W

602.95 N89-24-38E

579.94

462

140.95

579.94

550.24

729.57

70.58

533.43

674.90

100.06

670.75

649.81
349.
579.84

449.81

100

71.067

314.78

674.98

340

60