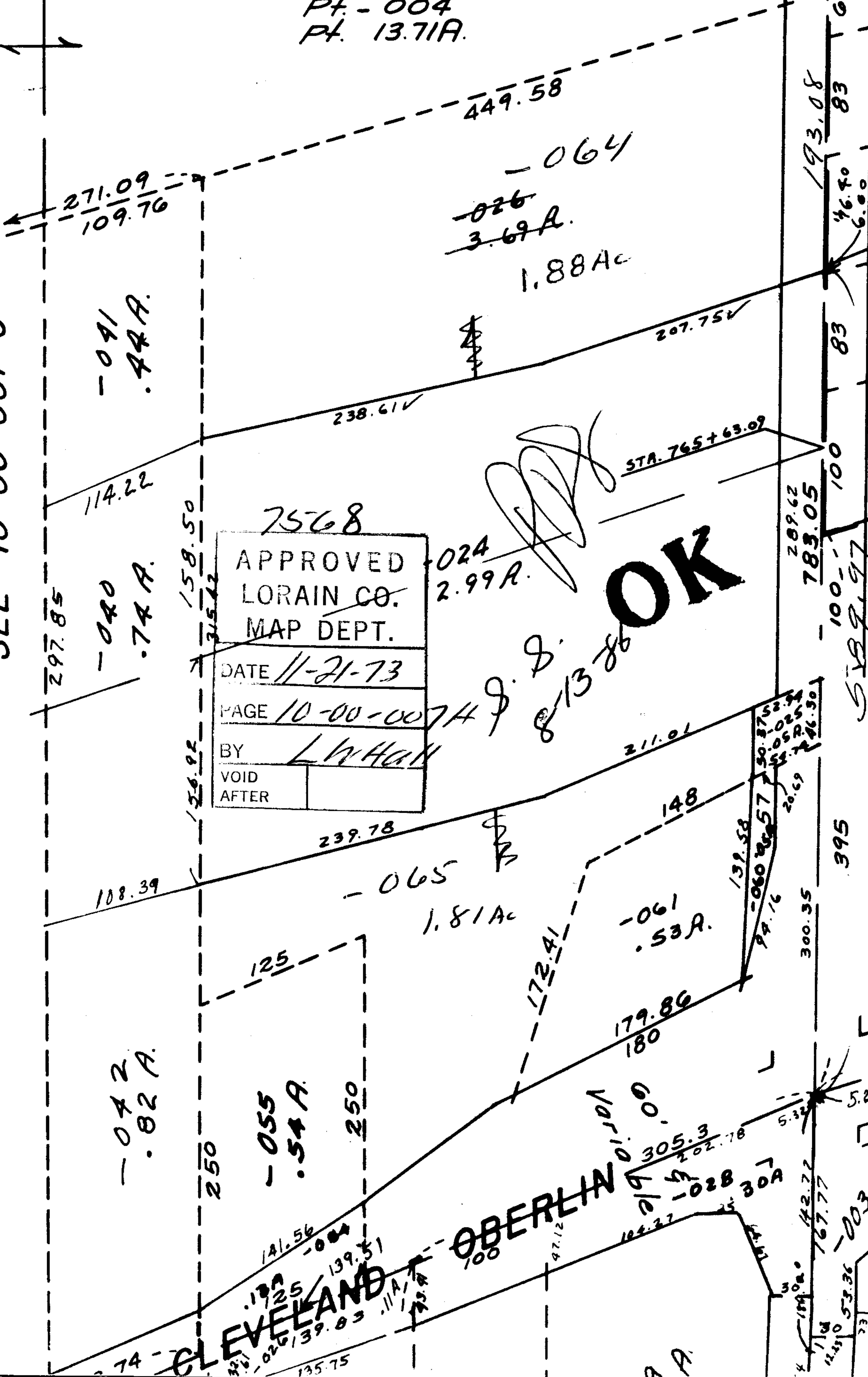


106

7568

Pt. - 004  
Pt. 13.71A.

SEE 10-00-007-G



7568

APPROVED  
LORAIN CO.  
MAP DEPT.

DATE 11-21-73

PAGE 10-00-0074

BY L. W. HALL

VOID AFTER

OK

J. S. 8/13/86

CLEVELAND

OBERLIN

9 A