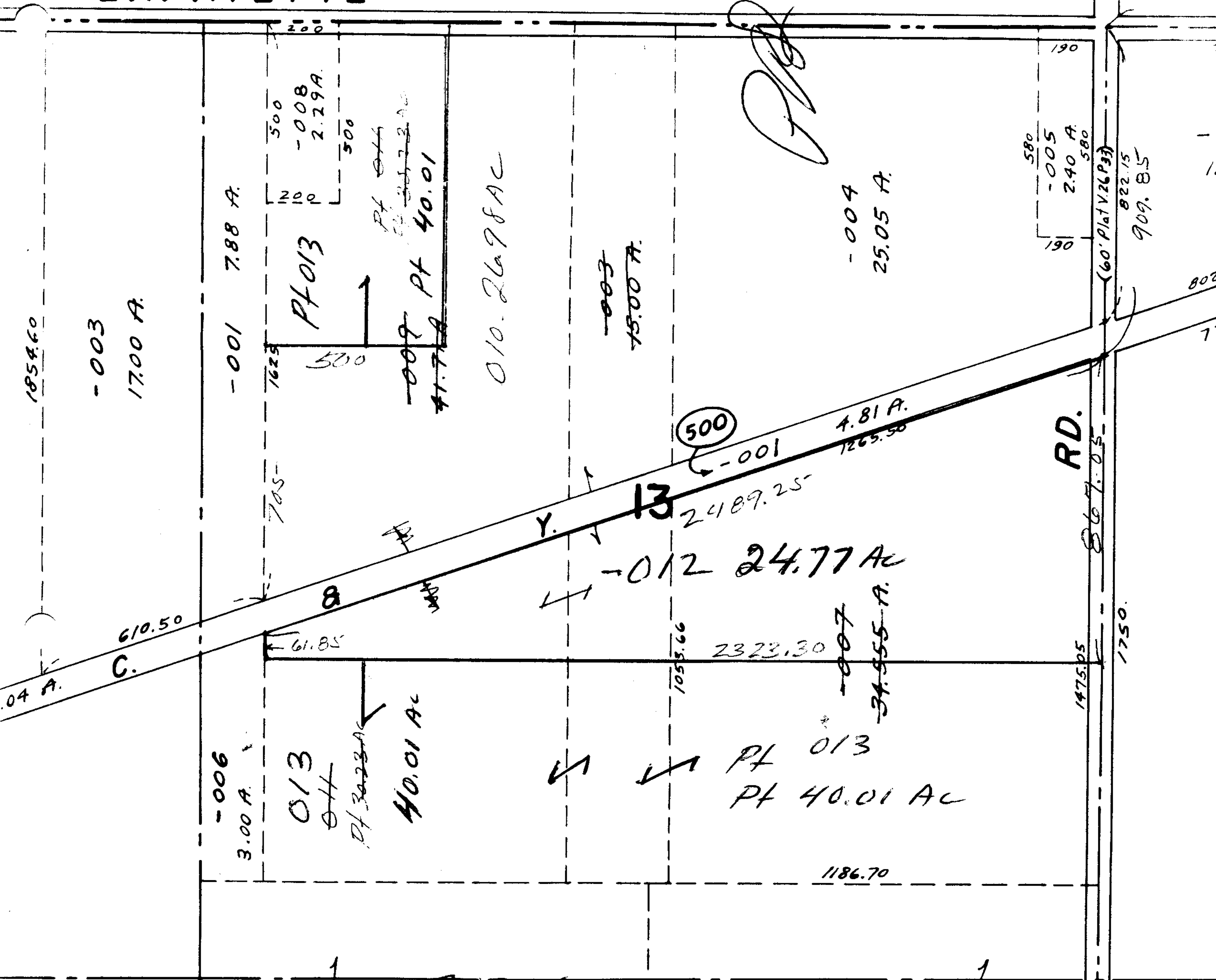


7356

LAFAYETTE



1854.60

-003  
17.00 A.

-001 7.88 A.

Pt 013

Pt 009  
Pt 40.01

010.2698 AC

-003  
15.00 A.

-004  
25.05 A.

580  
-005  
2.40 A.  
580

822.15  
909.85

500

-001 4.81 A.  
1265.50

13  
2489.25

-012 24.77 AC

-007  
34.555 A.

-006  
3.00 A.

013

40.01 AC

Pt 013  
Pt 40.01 AC

2323.30

1186.70

RD.

1475.05

1750.

8.00 A.

7356

APPROVED	
LORAIN CO.	
MAP DEPT.	
DATE	11-15-73
PAGE	214
BY	L W Hall
VOID AFTER	

\$ 8-13-86

OK

West Rd

1375