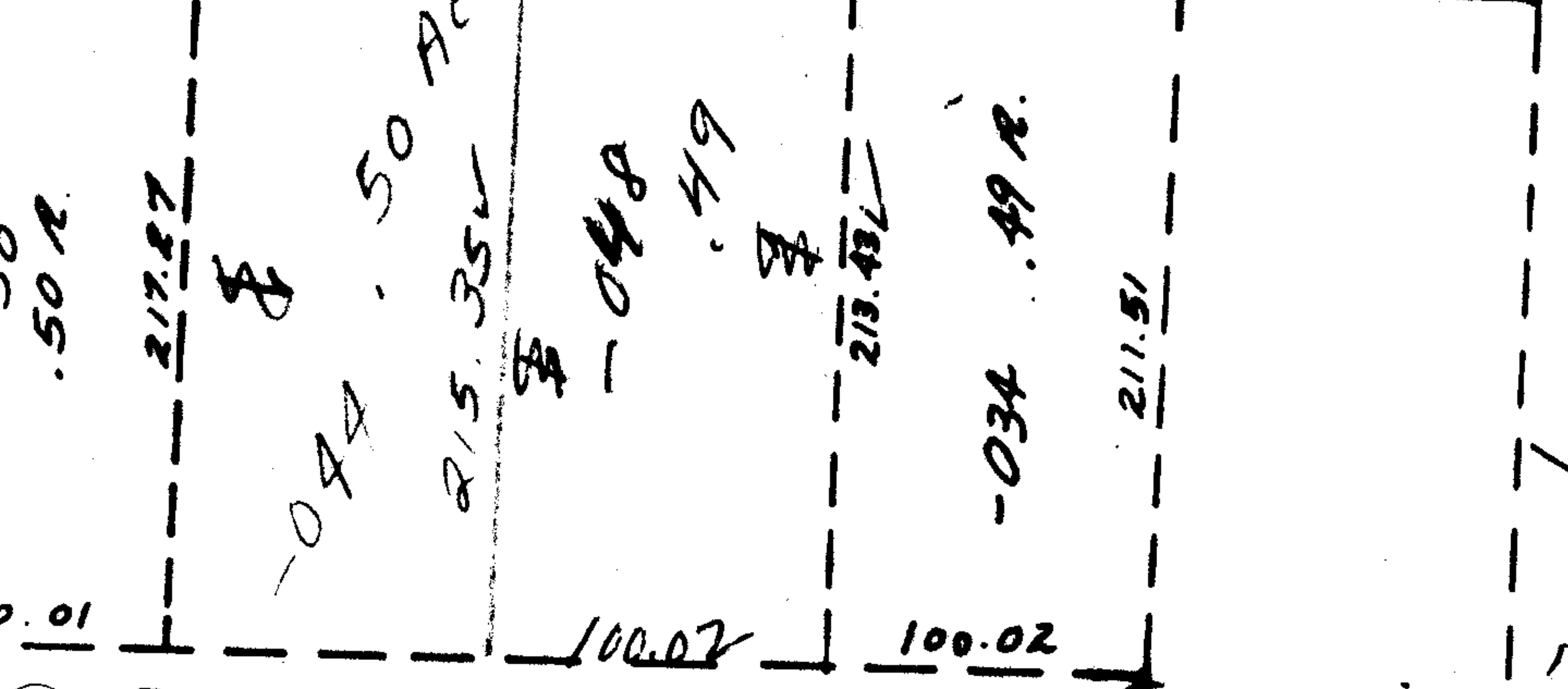
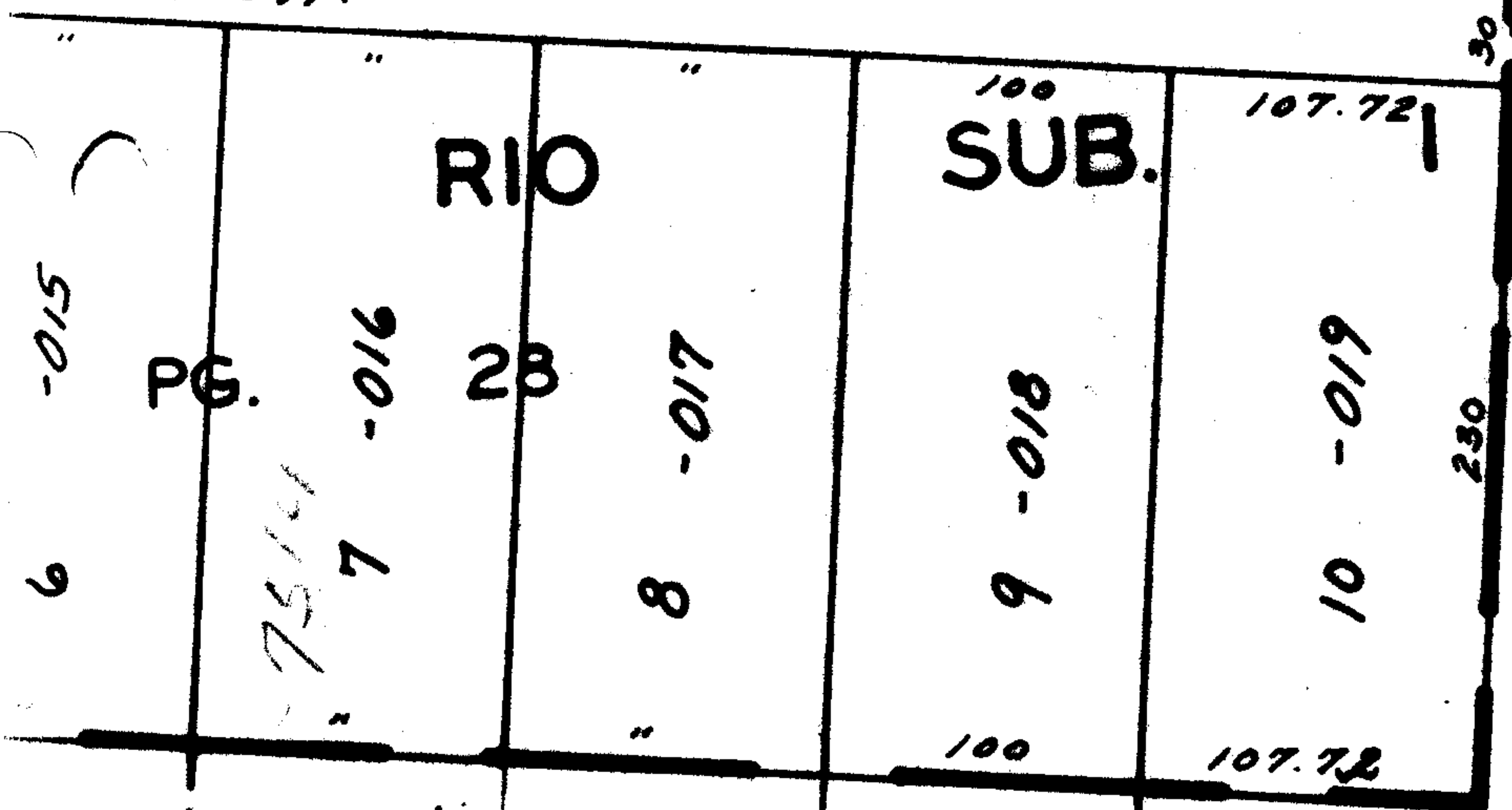


7546

.70 A.

RD.



043  
A. 20 R.  
A. 20 R.  
A. 20 R.  
3.20 AC  
3.20 AC

# 7546

7546

APPROVED	
LORAIN CO.	
MAP DEPT.	
DATE	11-13-73
PAGE	15-00-031A
BY	L. W. Hall
VOID AFTER	

NO

