

80  
SEE 14-00

7534

902'4"

OK

-001  
45.83A.

95

165

396

-002  
42.50A.

-001  
46.46A.

106

*[Handwritten signature]*

7534

APPROVED  
LORAIN CO.  
MAP DEPT.

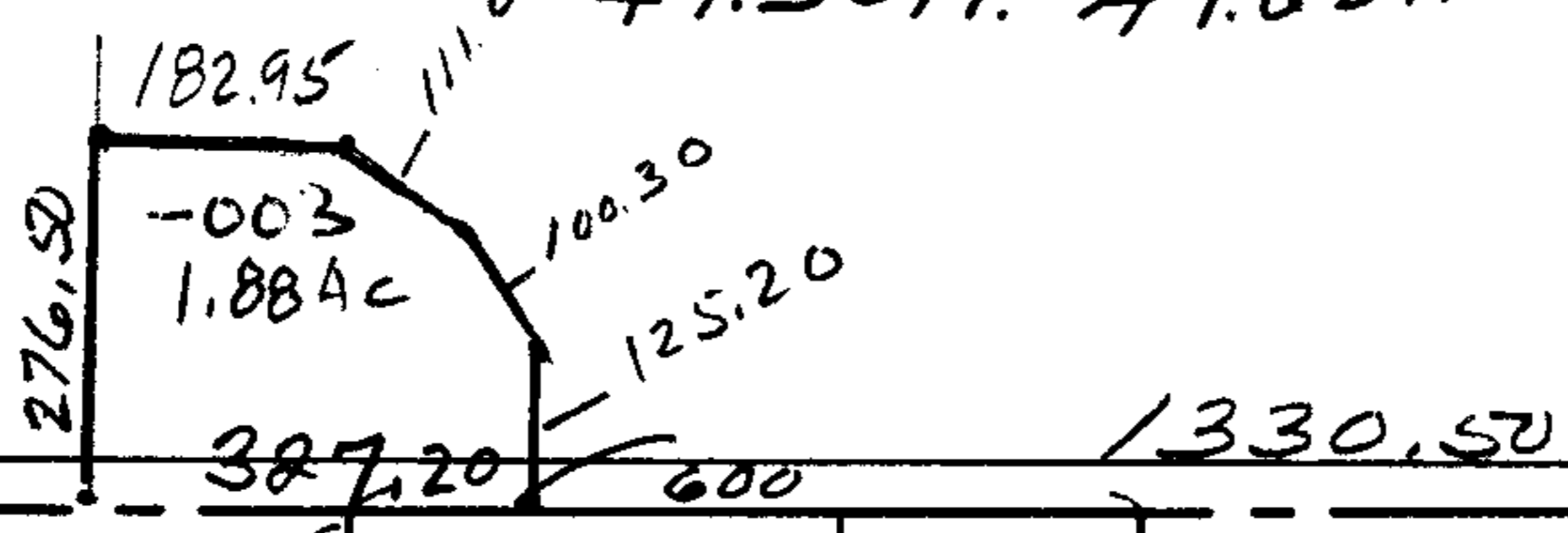
DATE 11-8-73

PAGE 14F

BY LWHall

VOID  
IF TORN

~~-002~~ 004  
~~49.50A.~~ 47.62A.



7-28-816 L.A.

350 525.95 219.5

30°  
84.11  
184.53

830