

7484

OK

20

008  
-006  
69.74 A.  
58.62 AC

-002  
11.78

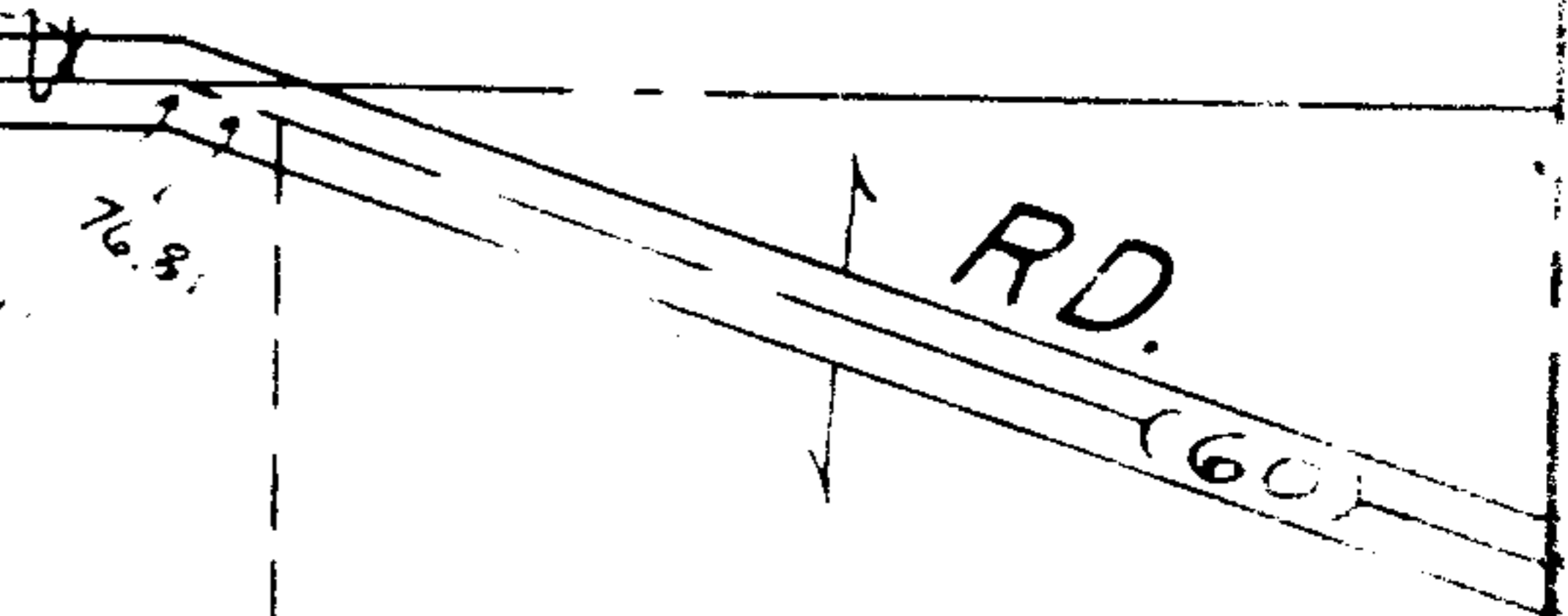
-003  
30.95 A.

-004  
23.00 A.

7484

APPROVED
LORAIN CO.
MAP DEPT.
DATE 10-24-73
PAGE 9 D
BY L. W. Hall
VOID AFTER

*[Handwritten signature]*



300 x 945 = 283,500 sq ft ÷ 43560 = 6.51

1068.79  
2053.09

21748 7024.32

1007.10  
-005  
6.84 A.

-005  
40.16 A.

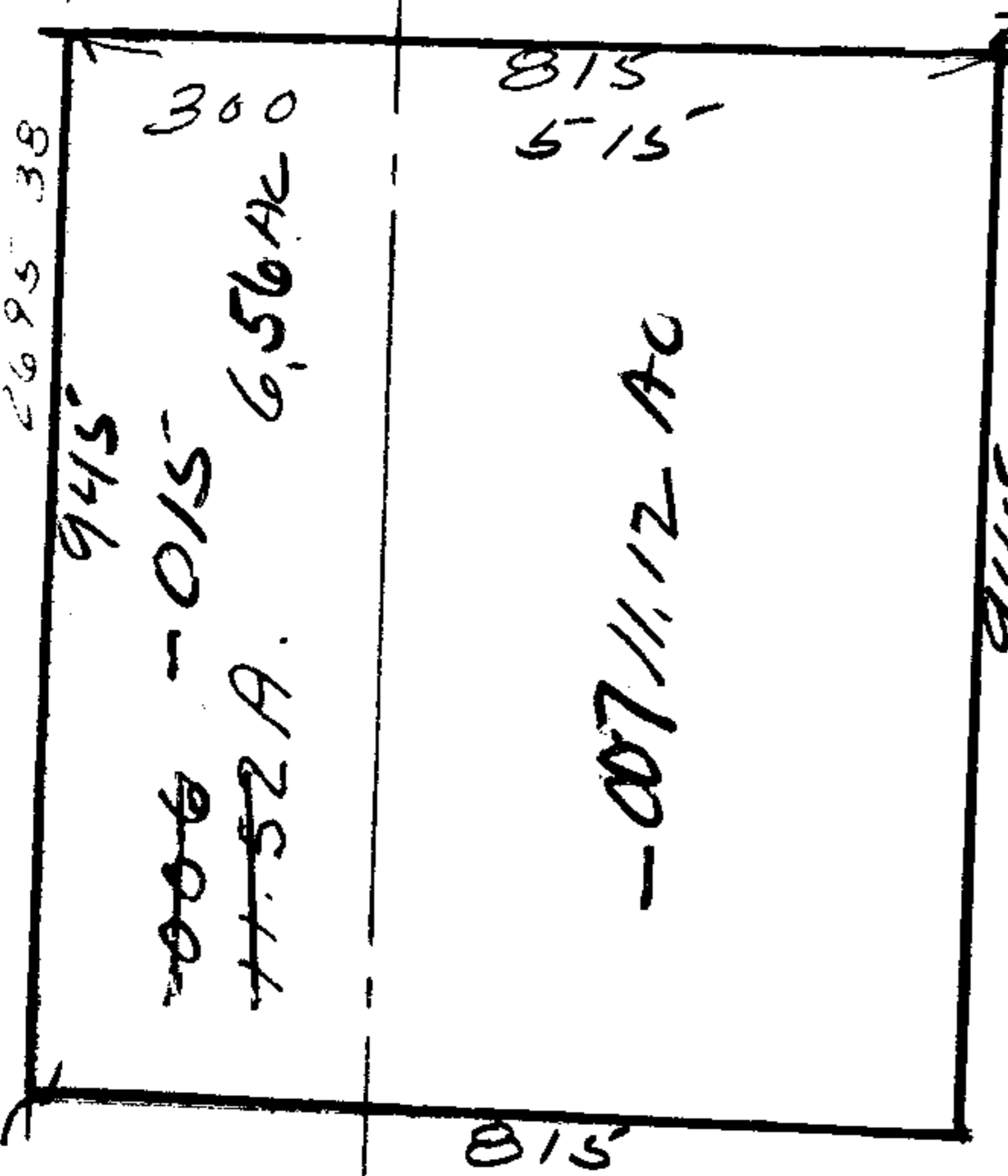
502.26

985.30

1021.54

2069.28

1116.32



515 x 945 = 486,675  
43560

2695.38

945'

300'

-006  
11.52 A.  
6.56 AC

815  
515'

-007 11.12 AC

945'

815'

743.28

016 4.96 AC

1059.24

1035.42

1688

477

446.83

501	667.1	625	140	120
116 A		376		
52.33		-006		
		1.21 A		
		274		
		-004		
		1.04 A		
		315.75		
		140		120

27  
3.43.7

350.80

76.8

(60)