

171

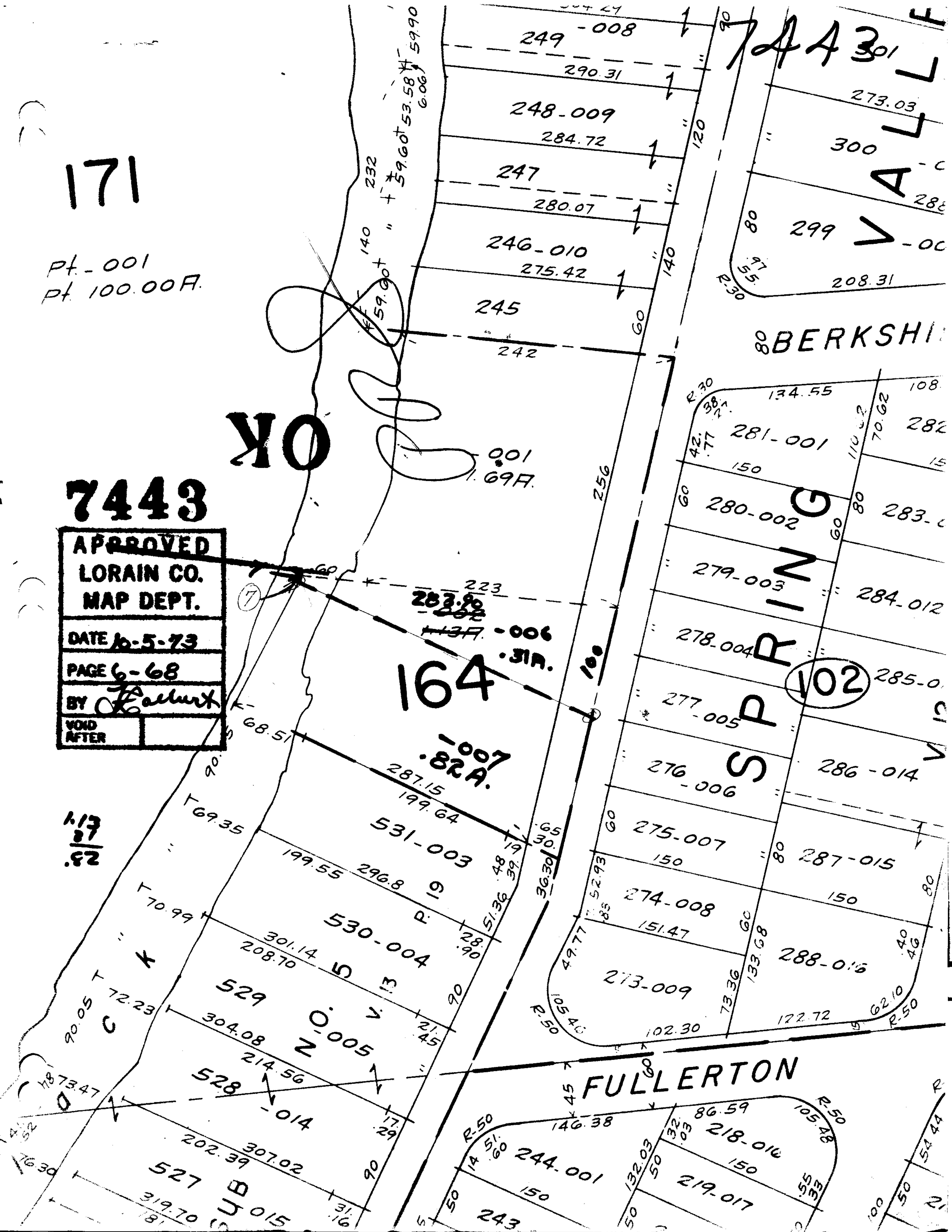
Pt. - 001  
Pt. 100.00 F.

OK

7443

APPROVED
LORAIN CO.
MAP DEPT.
DATE 6-5-73
PAGE 6-68
BY <i>K. Eckert</i>
VOID AFTER

1/13  
2/23



A A 301 F  
273.03  
300  
288  
299 > - 00  
208.31

BERKSHIRE

134.55  
281-001  
150  
280-002  
279-003  
278-004  
277-005  
276-006  
275-007  
274-008  
273-009  
108  
282  
15  
283-  
284-012  
285-0  
10

SPRING  
102  
286-014  
287-015  
150  
288-016  
172.72  
62.10  
R-50

FULLERTON

86.59  
218-016  
150  
219-017  
244-001  
150  
243  
105.48  
55.33  
57.44  
R-50  
R-50