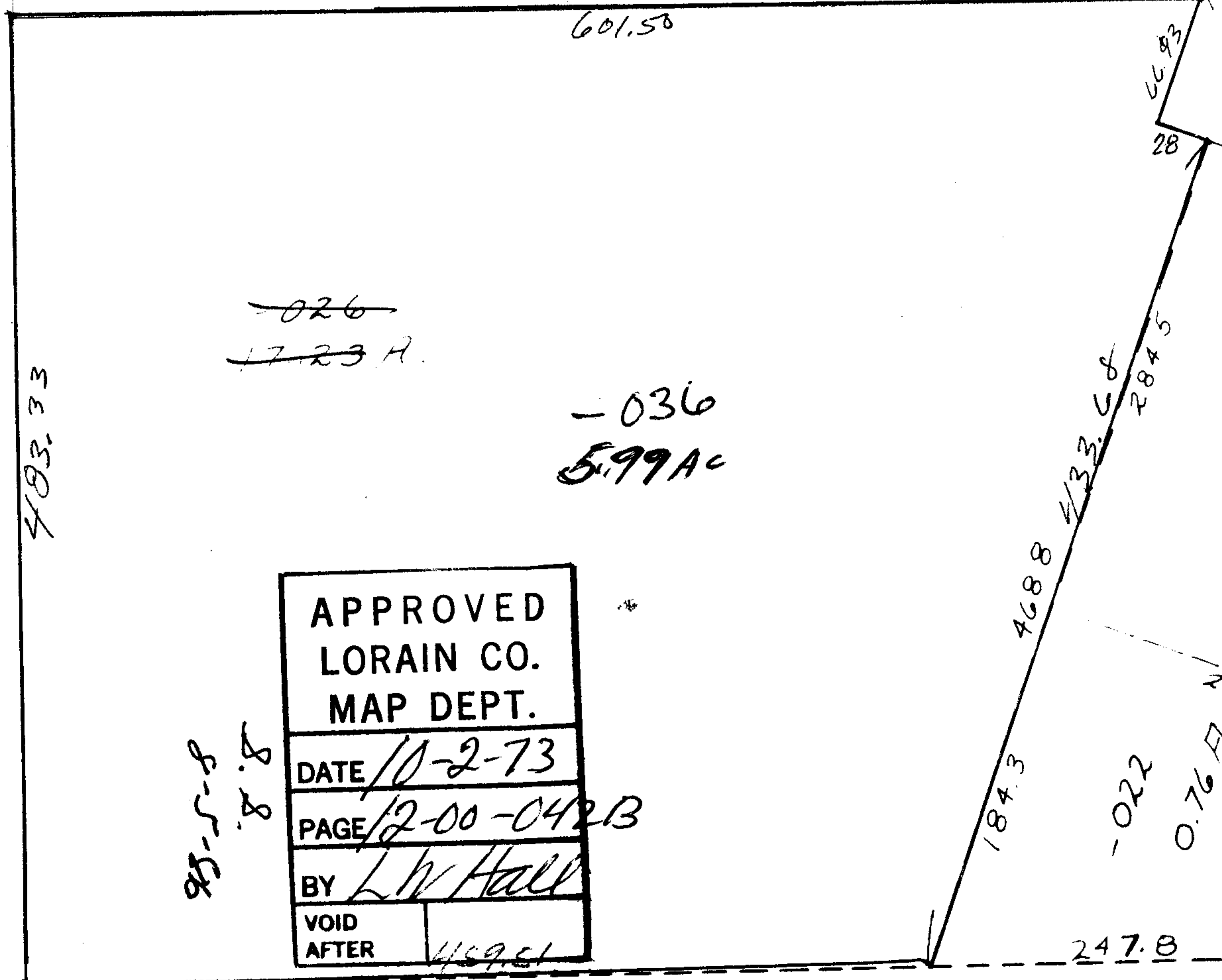


1453.22

OK

-037
11.24Ac



~~026~~
~~17.23 A.~~

-036
5.99Ac

-027
1.33 A

APPROVED LORAIN CO. MAP DEPT.	
DATE	10-2-73
PAGE	12-00-042B
BY	L. W. Hall
VOID AFTER	4/59.61

85-5-8
8.8

-018 .79A.

1209.01
1219.01

SEE 12-00-043-B

COLUMBIA WEST RIVER
726.12
109°55'

pt 12-00-0

pt 7

7433

331.98